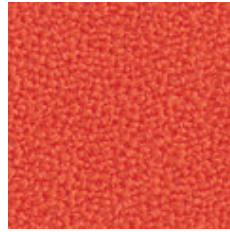
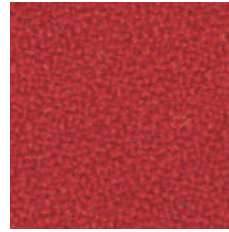


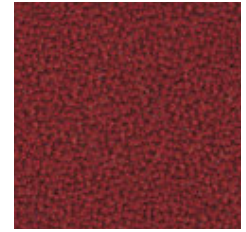
JA 068



JA 428



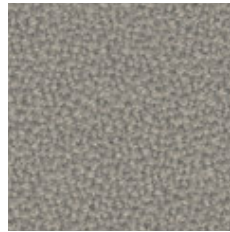
JA 027



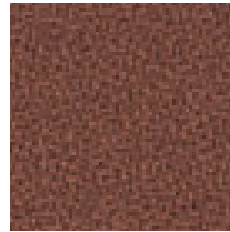
JA 062



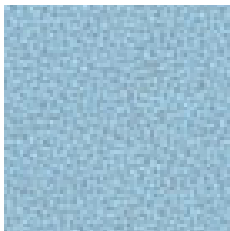
JA 409



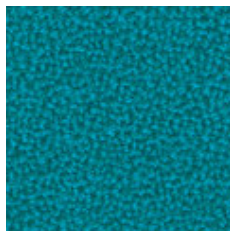
JA 125



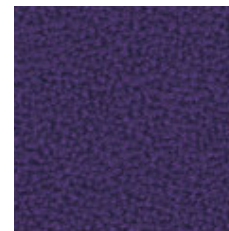
JA 508



JA 510



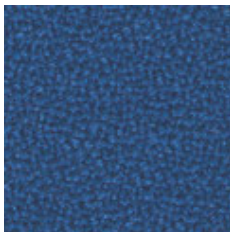
JA 194



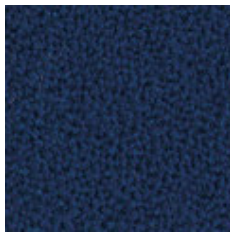
JA 157



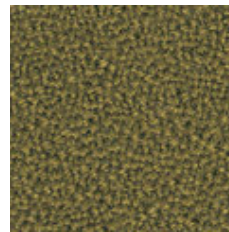
JA 061



JA 015



JA 435



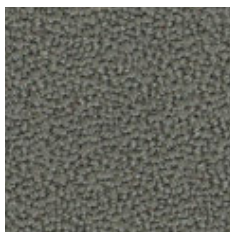
JA 169



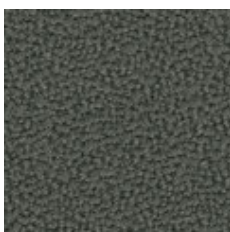
JA 443



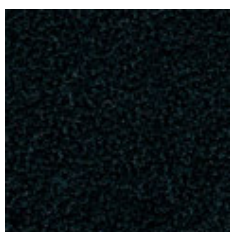
JA 416



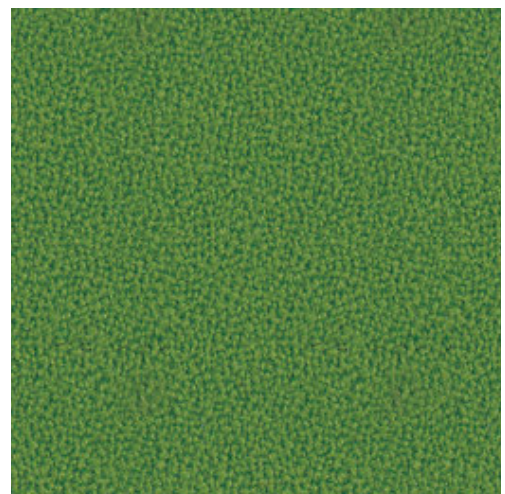
JA 022



JA 001



JA 002



JA 442

- D**
- Wolle 100%
 - Gewicht 370 g/m² +/-5%
 - Scheuerfestigkeit 60 000
Zyklen Martindale
(B5 5690)
 - Fusselbildung >4
BS:EN ISO 12945-2:2000
 - Attest über schwere
Entflammbarkeit
(BS EN 1021-1)
(BS EN 1021-2)
BS7176:2007 Low Hazard
UNI 9175 (1987)
UNI 9175/FA1 (1994) IM

- GB**
- 100% wool
 - weight 370 g/m² +/-5%
 - abrasion 60 000
cycles Martindale
(B5 5690)
 - resistance to pilling >4
BS:EN ISO 12945-2:2000
 - non-flammability certificate
(BS EN 1021-1)
(BS EN 1021-2)
BS7176:2007 Low Hazard
UNI 9175 (1987)
UNI 9175/FA1 (1994) IM

- PL**
- wełna 100%
 - waga 370 g/m² +/-5%
 - odporność na ścieranie 60 000
cykli Martindale
(B5 5690)
 - odporność na pilling >4
BS:EN ISO 12945-2:2000
 - atest trudnozapalności
(BS EN 1021-1)
(BS EN 1021-2)
BS7176:2007 Low Hazard
UNI 9175 (1987)
UNI 9175/FA1 (1994) IM

TEXTILES bring **COLOUR**
100% LANEVE™ wool

BLAZER



CUZ39



CUZ90



CUZ14



CUZ31



CUZ18



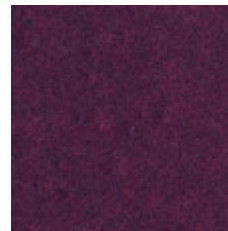
CUZ63



CUZ1L



CUZ1K



CUZ32



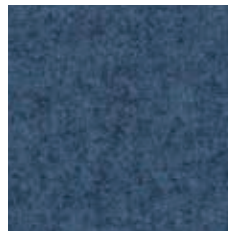
CUZ27



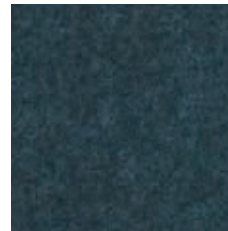
CUZ02



CUZ1R



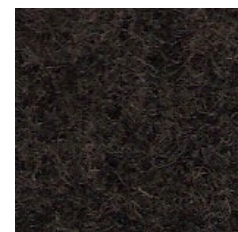
CUZ1W



CUZ62



CUZ09



CUZ67



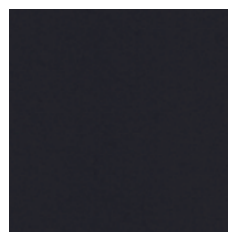
CUZ12



CUZ28



CUZ30



CUZ08



CUZ1E

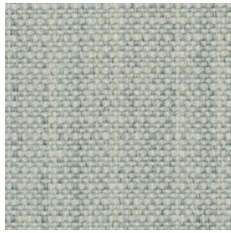
Blazer is made from 100% LANEVE™ wool, sustainably produced and traceable right back to individual farms Banks Peninsula Growers on South Island, New Zealand. Laneve promises wool integrity and complete chain of custody from identifiable farm to finished

- D**
- Schurwolle 100%
 - Gewicht 460 g/m² +/-5%
 - Rollenbreite: 140 cm
 - Scheuerfestigkeit 50 000 Zyklen Martindale
 - Fusselbildung >4
BS: EN ISO 12945-2 (2000)
 - Lichtechtheit 5
(ISO 105-B02: 2014)
 - Attest über schwere Entflammbarkeit
BS EN 1021 - 1:2014
BS EN 1021 - 2:2014
BS7176:2007 Low Hazard

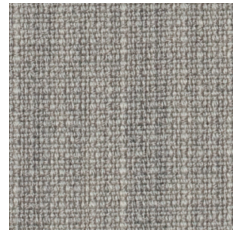
- GB**
- 100% virgin wool
 - weight 460 g/m² +/-5%
 - roll width: 140 cm
 - abrasion 50 000 cycles Martindale
 - resistance to pilling >4
BS: EN ISO 12945-2 (2000)
 - Light fastness 5
(ISO 105-B02: 2014)
 - non-flammability certificate
BS EN 1021 - 1:2014
BS EN 1021 - 2:2014
BS7176:2007 Low Hazard

- PL**
- wełna 100%
 - waga 460 g/m² +/-5%
 - szer. rolki: 140 cm
 - odporność na ścieranie 50 000 cykli Martindale
 - odporność na pilling >4
BS: EN ISO 12945-2 (2000)
 - odporność na światło 5
(ISO 105-B02: 2014)
 - atest trudnozapałności
BS EN 1021 - 1:2014
BS EN 1021 - 2:2014
BS7176:2007 Low Hazard

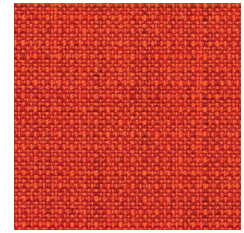




CS 031



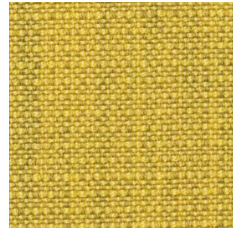
CS 033



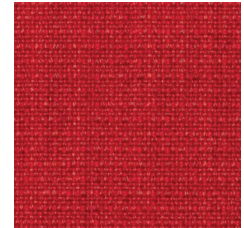
CS 430



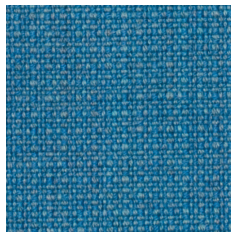
CS 032



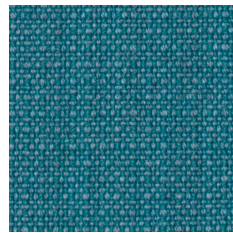
CS 202



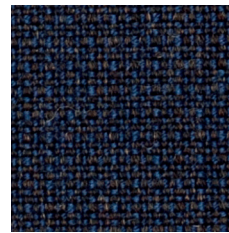
CS 432



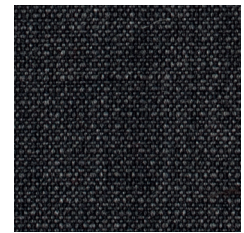
CS 601



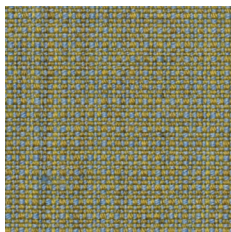
CS 602



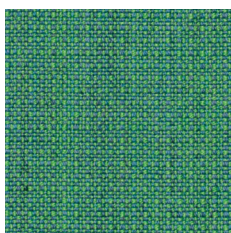
CS 125



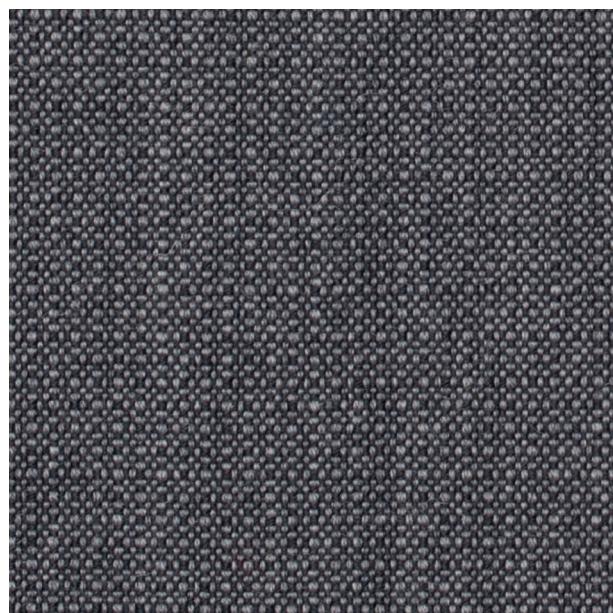
CS 013



CS 201



CS 605



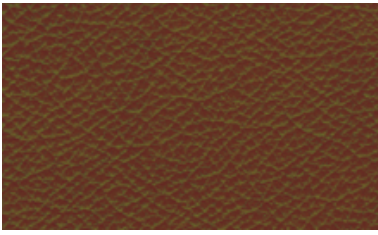
CS 022

- D**
- 93% Schurwolle, 7% poliamid
 - Gewicht 328 g/m²
 - Rollenbreite: 140 cm
 - Scheuerfestigkeit 200 000 Zyklen Martindale (EN ISO 12947-2)
 - Fusselbildung 4-5 (EN ISO 12945-2)
 - Lichtbeständigkeit 5-7 (EN ISO 105 - B02)
 - Abrieffestigkeit 4-5 (EN ISO 105 x 12 (nass/trocken))
 - Entzündlichkeit EN 1021 1&2, BS 5852 0&1, Calif. Bull. 117-E Klasse 1, IMO MS c 307(88) Annex 1 Parte 8, Zertifikat MED IMO

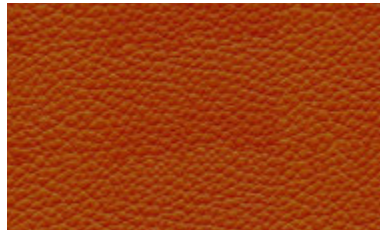
- GB**
- 93% wool, 7% polyamid
 - weight 328 g/m²
 - roll width: 140 cm
 - abrasion 200 000 cycles Martindale (EN ISO 12947-2)
 - resistance to pilling 4-5 (EN ISO 12945-2)
 - light fastness 5-7 (EN ISO 105 - B02)
 - rubbing fastness 4-5 (EN ISO 105 x 12 (wet/dry))
 - non-flammability certificate: EN 1021 1&2, BS 5852 0&1, Calif. Bull. 117-E class 1, IMO MS c 307(88) Annex 1 part 8, MED certificate IMO

- PL**
- 93% wełna, 7% poliamid
 - waga 328 g/m²
 - szer. rolki: 140 cm
 - odporność na ścieranie 200 000 cykli Martindale (EN ISO 12947-2)
 - odporność na pilling 4-5 (EN ISO 12945-2)
 - odporność na światło 5-7 (EN ISO 105 - B02)
 - odporność na ścieranie 4-5 (EN ISO 105 x 12 (mokry/suchy))
 - atest trudnozapałności EN 1021 1&2, BS 5852 0&1, Calif. Bull. 117-E klasa 1, IMO MS c 307(88) aneks 1 część 8, certyfikat MED IMO





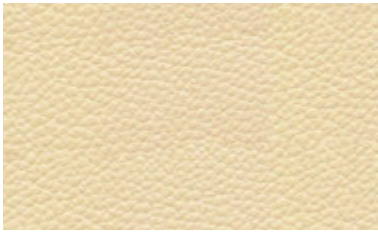
B-478



S-100



S-154



S-336



C-181



B-5458



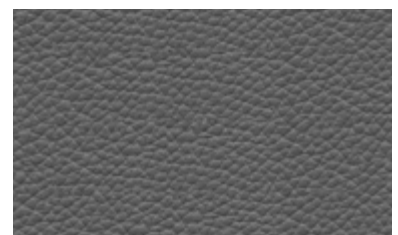
S-233



black



S-white



antracyt

- D**
- Groesse Ca. 4,2 m
 - Dicke >0,9 mm – 1,1 mm
 - Reibungstest nass >250
BS EN ISO 11640: 1998
 - Reibungstest trocken >500
(EN ISO 11640:1998)
 - Flexometry > 50 000 Zyklen
BS EN ISO 5402:2002
 - PCP und CFC bei Gerben wurden nicht verwendet
 - Es koennen kleine Unterschiede in der Faerbung hervortreten
 - Zigaretten- und Streichholztest
1021-1:2006
1021-2:2006

- GB**
- size Ca. 4,2 sqm
 - thickness >0,9 mm – 1,1 mm
 - wet rub tests >250
BS EN ISO 11640: 1998
 - dry rub tests >500
(EN ISO 11640:1998)
 - flexometry > 50 000 cycles
BS EN ISO 5402:2002
 - no PCP or CFC used during tanning process
 - natural colour variations may occur
 - non-flammability certificate
1021-1:2006
1021-2:2006

- PL**
- wielkość błamu około 4,2 m
 - grubość >0,9 mm – 1,1 mm
 - test tarcia na mokro >250₂
BS EN ISO 11640: 1998
 - test tarcia na sucho >500
(EN ISO 11640:1998)
 - zginanie > 50 000 cykli
BS EN ISO 5402:2002
 - nie stosowano PCP i CFC podczas procesu garbowania
 - mogą występować niewielkie różnice w odcieniu i strukturze
 - atest trudnozapałności
1021-1:2006
1021-2:2006

Vorgestellte Farbgebung ist kein Angebot im Sinne der Rechtsvorschriften
The colours presented do not constitute an offer within the meaning of the law
Przedstawiona kolorystyka nie stanowi oferty w rozumieniu prawa

LEDER / LEATHER / SKÓRA

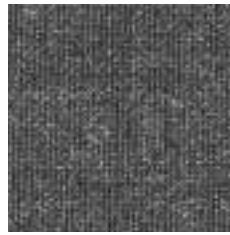




RX 912



RX 163



RX 173



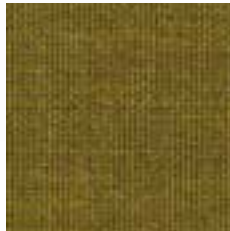
RX 393



RX 733



RX 123



RX 412



RX 753



RX 762



RX 643



RX 543



RX 433



RX 942



- D**
- **Anwendungsbereich:** Büros, Hotels, Objectbereich, privaten Wohnbereich. Hohe Strapazierfähigkeit
 - **Zusammensetzung:** 90% Schurwolle, 10% nylon (Wolle mit erhöhter Widerstandsfähigkeit)
 - **Gewicht:** Ungefähr 415 g/lin.m
Reinigung: Staubsaugen und Reinigung
 - **Scheuerfestigkeit:** Ungefähr 100.000 Martindale rubs, EN ISO 12947
 - **Fusselbildung:** Note 3-4, EN ISO 12945
 - **Lichtechtheit:** Note 5-7, ISO 105-B02
 - **Flammwidrigkeit:** EN 1021-1/2. BS 5852 Zündquelle 2-3. ÖNORM B1/Q1. NF D 60 013. UNI 9175 11M. US Cal. Tech. Bull. 117. AS/NZS 3837 Klasse 2. Sec. E, IMO A.652(16).(Crib 5 und B2 (bei schwerentflammbare Ausrüstung))

- GB**
- **Application:** Offices, hotels, institutions, domestic use. Great durability.
 - **Composition:** 90% new wool, worsted; 10% nylon
 - **Weight:** Approximately 415 g/lin.m
 - **Cleaning:** Vacuuming and dry cleaning
 - **Abrasion:** Approximately 100.000 Martindale rubs, EN ISO 12947
 - **Pilling:** Note 3-4, EN ISO 12945
 - **Lightfastness:** Note 5-7, ISO 105-B02
 - **Flame resistance:** EN 1021-1/2. BS 5852 ignition source 2-3. ÖNORM B1/Q1. NF D 60 013. UNI 9175 11M. US Cal. Tech. Bull. 117. AS/NZS 3837 class 2. Sec. E, IMO A.652(16).(Crib 5 and B2 (when flame protected))

- PL**
- **Zastosowanie:** Biura, hotele, instytucje, domy/mieszkania. Wysoka trwałość.
 - **Skład:** 90% wełna, 10% nylon (Wełna o podwyższonej wytrzymałości)
 - **Waga:** ok. 415 g/m²
 - **Czyszczenie:** odkurzanie i czyszczenie chemiczne
 - **Odporność na ścieranie:** 100.000 Martindale rubs, EN ISO 12947
 - **Odporność na pilling:** Note 3-4, EN ISO 12945
 - **Odporność na światło:** Note 5-7, ISO 105-B02
 - **Atest trudnopalności:** EN 1021-1/2. BS 5852 źródło zapłonu 2-3. ÖNORM B1/Q1. NF D 60 013. UNI 9175 11M. US Cal. Tech. Bull. 117. AS/NZS 3837 klasa 2. Sec. E, IMO A.652(16).(Crib 5 i B2 (po uniepalnieniu))



Vorgestellte Farbgebung ist kein Angebot im Sinne der Rechtsvorschriften
The colours presented do not constitute an offer within the meaning of the law
Przedstawiona kolorystyka nie stanowi oferty w rozumieniu prawa

edycja: 09.2014



DECORATIVE STITCH + RING ŚCIEG OZDOBNY + RING



thread no:
kod nici:

T 1702

T 9573

T 8465

T 2517

T 0381

T 0839

Suggested for:
Sugerowane dla:

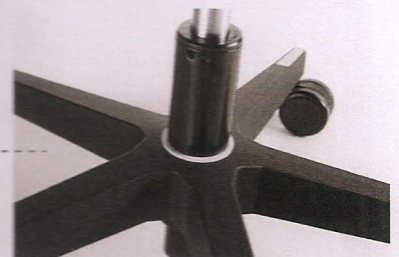
**fabric's/
tkanin**

**collection's/
kolekcji**

SKÓRA
KEIMO
VALENCIA
SILVERTEX

CEO
CLUBIN
DUAL
ELEVEN
ORTE 3DH
VOO VOO
IN ACCESS

Colorful ring for base 17 /
Kolorowy ring do bazy 17



white/biały



red/czerwony



green/zielony

EVERY DETAIL has a **MEANING**, **MATCH** COLOUR of the ring to the stitch.
KAŻDY DETAL ma **ZNACZENIE**, **DOBIERZ** KOLOR ściegu do ringu.