

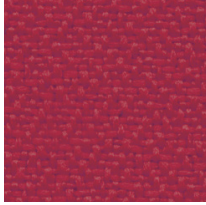
YB | Lucia

PRICE GROUP | PREISGRUPPE | GROUPE DE PRIX

1



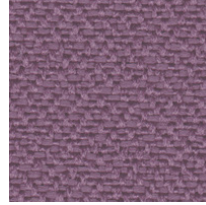
YB130



YB105



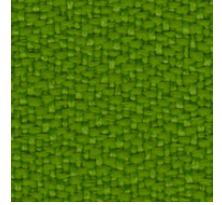
YB156



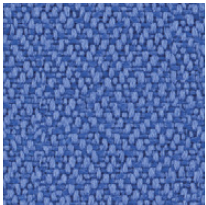
YB102



YB090



YB200



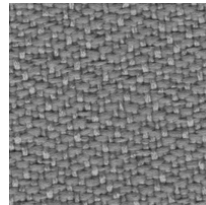
YB097



YB026



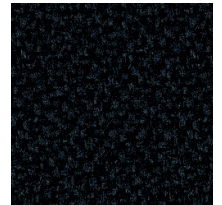
YB093



YB094



YB046



YB009

Composition:

100% recycled polyester. Non metallic dyestuffs

Weight:

260 g/m²

Abrasion resistance:

50 000 Martindale cycles

Flammability:

EN 1021-1, EN 1021-2, BS 7176 low hazard, BS 476 Class 1

Other:

Environmental: EU Ecolabel certified, recyclable

Material:

100% recyceltes Polyester. Nicht schwermetallhaltige Farbstoffe

Gewicht:

260 g/m²

Scheuerfestigkeit:

50 000 Touren Martindale

Brandschutznormen:

EN 1021-1, EN 1021-2, BS 7176 low hazard, BS 476 Class 1

Sonstiges:

Umweltfreundlich: EU Ecolabel zertifiziert, recyclingfähig

Composition :

100% polyester recyclé. Teintures non métalliques

Poids :

260 g/m²

Résistance à l'abrasion :

50 000 Cycles Martindales

Résistance au feu :

EN 1021-1, EN 1021-2, BS 7176 low hazard, BS 476 Class 1

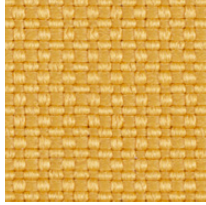
Autres :

Favorable à l'environnement : certifié EU Ecolabel, recyclable

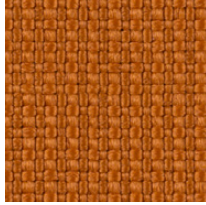
SM | Sempre

PRICE GROUP | PREISGRUPPE | GROUPE DE PRIX

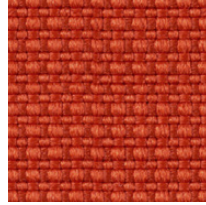
1



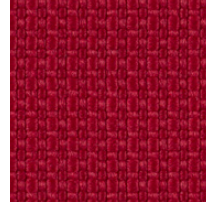
SM11



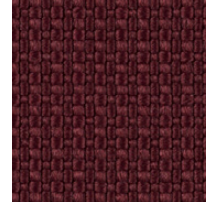
SM10



SM09



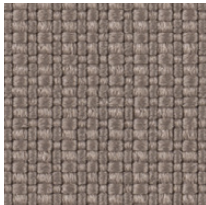
SM12



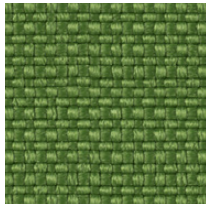
SM06



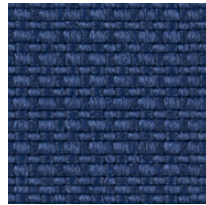
SM05



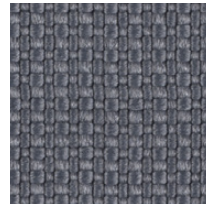
SM04



SM08



SM07



SM03



SM02



SM01

Composition:

100% polyester

Weight:

366 g/m²

Abrasion resistance:

160 000 Martindale cycles

Flammability:

EN 1021-1, EN 1021-2

Material:

100% Polyester

Gewicht:

366 g/m²

Scheuerfestigkeit:

160 000 Touren Martindale

Brandschutznormen:

EN 1021-1, EN 1021-2

Composition :

100% polyester

Poids :

366 g/m²

Résistance à l'abrasion :

160 000 Cycles Martindales

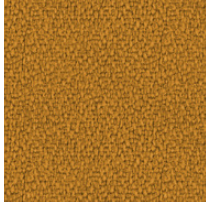
Résistance au feu :

EN 1021-1, EN 1021-2

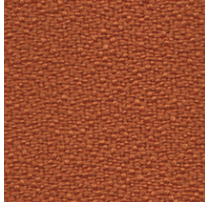
BN | Bondai

PRICE GROUP | PREISGRUPPE | GROUPE DE PRIX

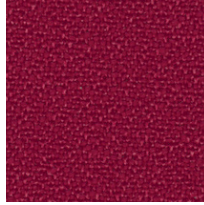
1



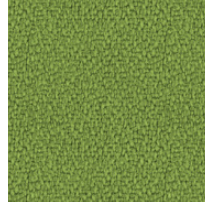
BN3005



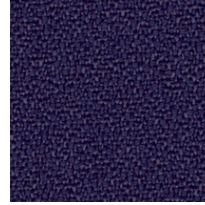
BN3012



BN4011



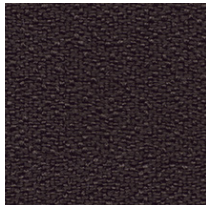
BN7048



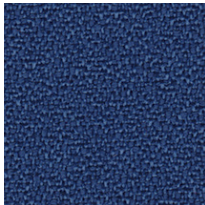
BN5004



BN1005



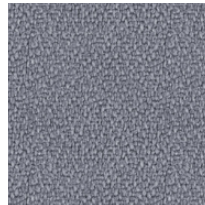
BN2036



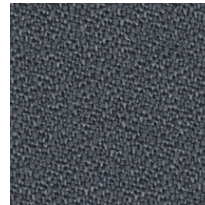
BN6016



BN1008



BN8078



BN8010



BN8033

Composition:

100% polyester

Weight:

250 g/m²

Abrasion resistance:

150 000 Martindale cycles

Flammability:

EN 1021-1, EN 1021-2, BS 7176 medium hazard,
BS 5852 Crib 5

Material:

100% Polyester

Gewicht:

250 g/m²

Scheuerfestigkeit:

150 000 Touren Martindale

Brandschutznormen:

EN 1021-1, EN 1021-2, BS 7176 medium hazard,
BS 5852 Crib 5

Composition :

100% polyester

Poids :

250 g/m²

Résistance à l'abrasion :

150 000 Cycles Martindales

Résistance au feu :

EN 1021-1, EN 1021-2, BS 7176 medium hazard,
BS 5852 Crib 5

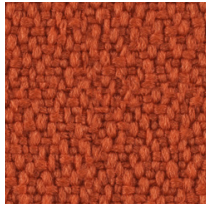
XR | Xtreme

PRICE GROUP | PREISGRUPPE | GROUPE DE PRIX

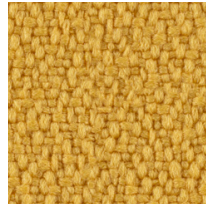
2



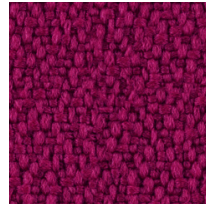
XR079



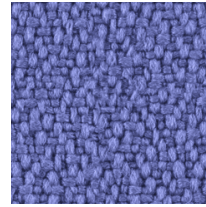
XR076



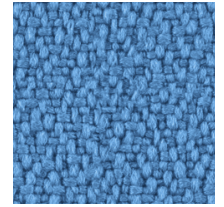
XR072



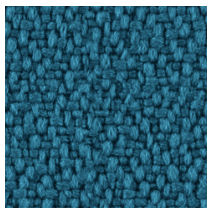
XR101



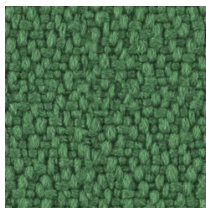
XR069



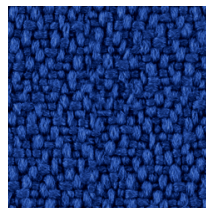
XR073



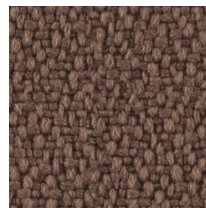
XR160



XR159



XR005



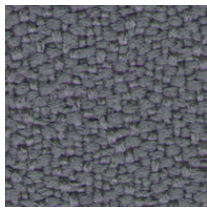
XR091



XR108



XR026



XR081



XR009

Composition:

100% recycled polyester. Non metallic dyestuffs

Weight:310 g/m²**Abrasion resistance:**

100 000 Martindale cycles

Flammability:EN 1021-1, EN 1021-2, BS 7176 low hazard,
BS 7176 medium hazard, BS 5852 Crib 5,
DIN 4102 B1, UNI 9174 Classe 1**Other:**

Environmental: EU Ecolabel certified, recyclable

Material:100% recyceltes Polyester. Nicht schwermetallhaltige
Farbstoffe**Gewicht:**310 g/m²**Scheuerfestigkeit:**

100 000 Touren Martindale

Brandschutznormen:EN 1021-1, EN 1021-2, BS 7176 low hazard,
BS 7176 medium hazard, BS 5852 Crib 5,
DIN 4102 B1, UNI 9174 Classe 1**Sonstige:**Umweltfreundlich: EU Ecolabel zertifiziert,
recyclingfähig**Composition :**

100% polyester recyclé. Teintures non métalliques

Poids :310 g/m²**Résistance à l'abrasion :**

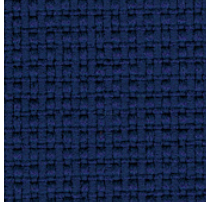
100 000 Cycles Martindales

Résistance au feu :EN 1021-1, EN 1021-2, BS 7176 low hazard,
BS 7176 medium hazard, BS 5852 Crib 5,
DIN 4102 B1, UNI 9174 Classe 1**Autres :**Favorable à l'environnement : certifié EU Ecolabel,
recyclable

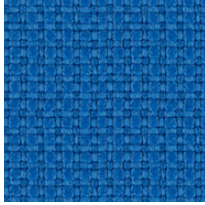
YN | Contract

PRICE GROUP | PREISGRUPPE | GROUPE DE PRIX

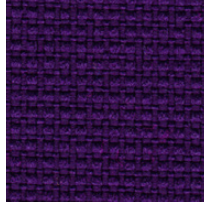
2



YN210



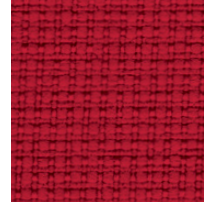
YN202



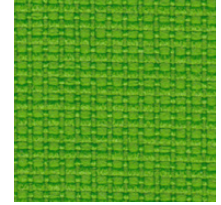
YN204



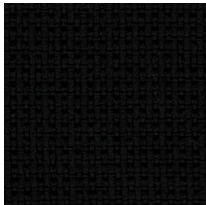
YN206



YN079



YN200



YN009

Composition:

100% recycled polyester. Non metallic dyestuffs

Weight:320 g/m²**Abrasion resistance:**

100 000 Martindale cycles

Flammability:

EN 1021-1, EN 1021-2, BS 7176 low hazard, BS 7176 medium hazard, BS 5852 Crib 5, NF P 503 M1, DIN 4102 B1, UNI 9174 Classe 1

Other:

Environmental: EU Ecolabel certified, recyclable

Material:

100% recyceltes Polyester. Nicht schwermetallhaltige Farbstoffe

Gewicht:320 g/m²**Scheuerfestigkeit:**

100 000 Touren Martindale

Brandschutznormen:

EN 1021-1, EN 1021-2, BS 7176 low hazard, BS 7176 medium hazard, BS 5852 Crib 5, NF P 503 M1, DIN 4102 B1, UNI 9174 Classe 1

Sonstiges:

Umweltfreundlich: EU Ecolabel zertifiziert, recyclingfähig

Composition :

100% polyester recyclé. Teintures non métalliques

Poids :320 g/m²**Résistance à l'abrasion :**

100 000 Cycles Martindales

Résistance au feu :

EN 1021-1, EN 1021-2, BS 7176 low hazard, BS 7176 medium hazard, BS 5852 Crib 5, NF P 503 M1, DIN 4102 B1, UNI 9174 Classe 1

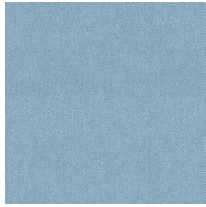
Autres :

Favorable à l'environnement : certifié EU Ecolabel, recyclable

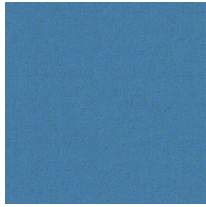
CSE | Era

PRICE GROUP | PREISGRUPPE | GROUPE DE PRIX

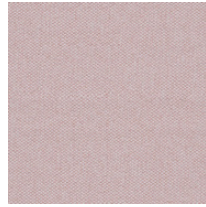
2



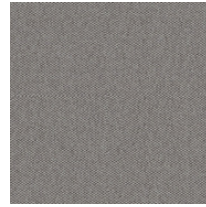
CSE20



CSE10



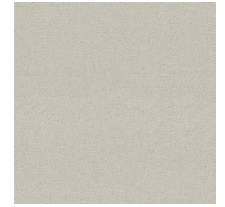
CSE19



CSE02



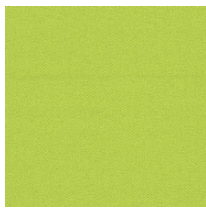
CSE11



CSE01



CSE03



CSE07



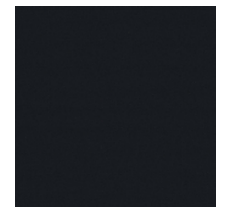
CSE16



CSE13



CSE21



CSE14

Composition:

100% polyester. Non metallic dyestuffs

Weight:

320 g/m²

Abrasion resistance:

≥100 000 Martindale cycles

Flammability:

EN 1021-1, EN 1021-2, BS 7176 low hazard

Material:

100% Polyester. Nicht schwermetallhaltige Farbstoffe

Gewicht:

320 g/m²

Scheuerfestigkeit:

≥100 000 Touren Martindale

Brandschutznormen:

EN 1021-1, EN 1021-2, BS 7176 low hazard

Composition :

100% polyester. Teintures non métalliques

Poids :

320 g/m²

Résistance à l'abrasion :

≥100 000 Cycles Martindales

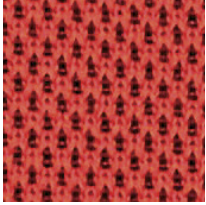
Résistance au feu :

EN 1021-1, EN 1021-2, BS 7176 low hazard

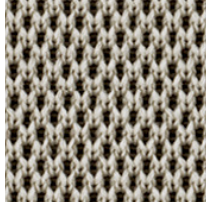
UNY | Nexus

PRICE GROUP | PREISGRUPPE | GROUPE DE PRIX

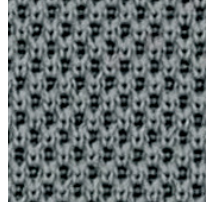
2



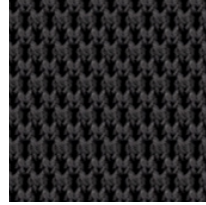
UNY04



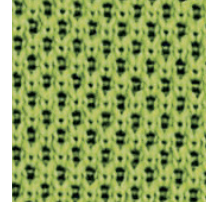
UNY02



UNY01



UNY11



UNY05

Composition:

100% polyester

Weight:

300 g/m²

Abrasion resistance:

100 000 Martindale cycles

Flammability:

EN 1021-1, EN 1021-2, BS 7176 low hazard

Material:

100% Polyester

Gewicht:

300 g/m²

Scheuerfestigkeit:

100 000 Touren Martindale

Brandschutznormen:

EN 1021-1, EN 1021-2, BS 7176 low hazard

Composition :

100% polyester

Poids :

300 g/m²

Résistance à l'abrasion :

100 000 Cycles Martindales

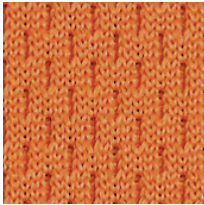
Résistance au feu :

EN 1021-1, EN 1021-2, BS 7176 low hazard

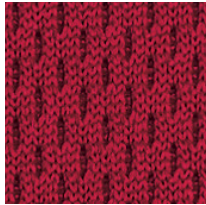
XF | Flex

PRICE GROUP | PREISGRUPPE | GROUPE DE PRIX

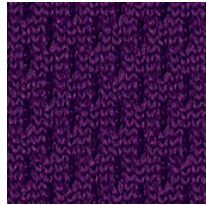
3



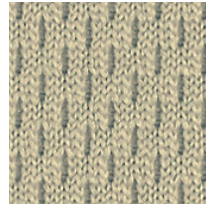
XF63035



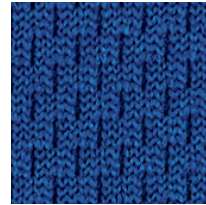
XF64089



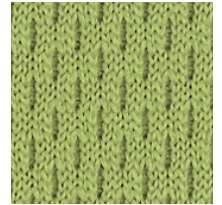
XF65037



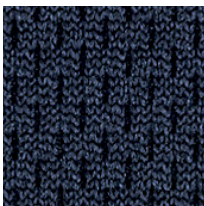
XF61078



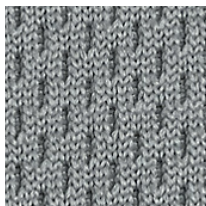
XF66062



XF68056



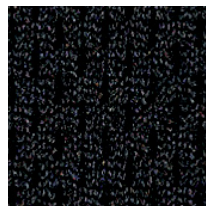
XF66065



XF60011



XF60025



XF60999

Composition:

100% polyester

Weight:450 g/m²**Abrasion resistance:**

80 000 Martindale cycles

Flammability:

EN 1021-1, EN 1021-2, Calif. Bull. 117E, Önorm B 3825, Önorm A 3800-1 Q1

Material:

100% Polyester

Gewicht:450 g/m²**Scheuerfestigkeit:**

80 000 Touren Martindale

Brandschutznormen:

EN 1021-1, EN 1021-2, Calif. Bull. 117E, Önorm B 3825, Önorm A 3800-1 Q1

Composition :

100% polyester

Poids :450 g/m²**Résistance à l'abrasion :**

80 000 Cycles Martindales

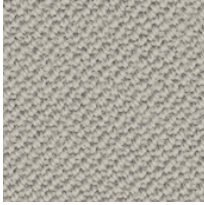
Résistance au feu :

EN 1021-1, EN 1021-2, Calif. Bull. 117E, Önorm B 3825, Önorm A 3800-1 Q1

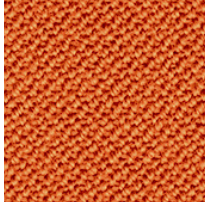
OX | Oxygen

PRICE GROUP | PREISGRUPPE | GROUPE DE PRIX

3



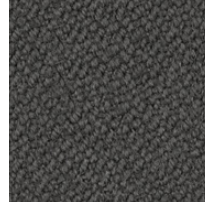
OX039



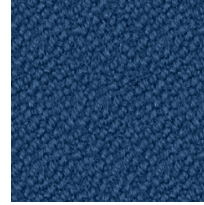
OX035



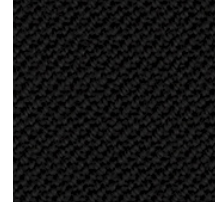
OX023



OX010



OX007



OX001

Composition:

90% wool, 10% polyamide

Weight:

400 g/m²

Abrasion resistance:

100 000 Martindale cycles

Flammability:

EN 1021-1, EN 1021-2, BS 7176 low hazard,
UNI 9175 Classe 1.IM

Material:

90% Wolle, 10% Polyamide

Gewicht:

400 g/m²

Scheuerfestigkeit:

100 000 Touren Martindale

Brandschutznormen:

EN 1021-1, EN 1021-2, BS 7176 low hazard,
UNI 9175 Classe 1.IM

Composition :

90% laine, 10% polyamide

Poids :

400 g/m²

Résistance à l'abrasion :

100 000 Cycles Martindales

Résistance au feu :

EN 1021-1, EN 1021-2, BS 7176 low hazard,
UNI 9175 Classe 1.IM

K | King L Elast

PRICE GROUP | PREISGRUPPE | GROUPE DE PRIX

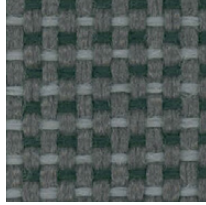
3



K9704



K4517



K8507



K6016



K8510

Composition:

100% polyester

Weight:

260 g/m²

Abrasion resistance:

70 000 Martindale cycles

Flammability:

EN 1021-1, EN 1021-2, BS 7176 medium hazard,
BS 5852 Crib 5, NF P 92-501-7 M1, DIN 4102 B1

Material:

100% Trevira CS Polyester

Gewicht:

260 g/m²

Scheuerfestigkeit:

70 000 Touren Martindale

Brandschutznormen:

EN 1021-1, EN 1021-2, BS 7176 medium hazard,
BS 5852 Crib 5, NF P 92-501-7 M1, DIN 4102 B1

Composition :

100% polyester Trevira CS

Poids :

260 g/m²

Résistance à l'abrasion :

70 000 Cycles Martindales

Résistance au feu :

EN 1021-1, EN 1021-2, BS 7176 medium hazard,
BS 5852 Crib 5, NF P 92-501-7 M1, DIN 4102 B1

LDS | Synergy

PRICE GROUP | PREISGRUPPE | GROUPE DE PRIX

4

**Composition:**

95% wool, 5% polyamide

Weight:400 g/m²**Abrasion resistance:**

100 000 Martindale cycles

Flammability:EN 1021-1, EN 1021-2, BS 7176 low hazard,
UNI 9175 Classe 1.IM, NF D 60-013 AM18,
Önorm B 3825, Önorm A 3800-1 Q1**Material:**

95% Wolle, 5% Polyamid

Gewicht:400 g/m²**Scheuerfestigkeit:**

100 000 Touren Martindale

Brandschutznormen:EN 1021-1, EN 1021-2, BS 7176 low hazard,
UNI 9175 Classe 1.IM, NF D 60-013 AM18,
Önorm B 3825, Önorm A 3800-1 Q1**Composition :**

95% laine, 5% polyamide

Poids :400 g/m²**Résistance à l'abrasion :**

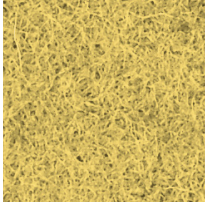
100 000 Cycles Martindales

Résistance au feu :EN 1021-1, EN 1021-2, BS 7176 low hazard,
UNI 9175 Classe 1.IM, NF D 60-013 AM18,
Önorm B 3825, Önorm A 3800-1 Q1

CUZ | Blazer

PRICE GROUP | PREISGRUPPE | GROUPE DE PRIX

4



CUZ58



CUZ85



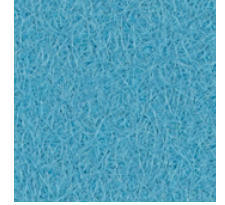
CUZ90



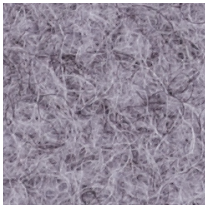
CUZ21



CUZ1Z



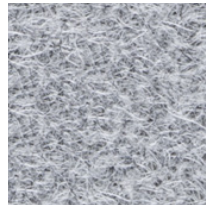
CUZ02



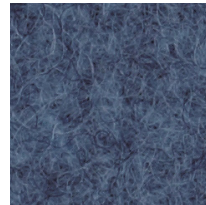
CUZ1S



CUZ28



CUZ1E



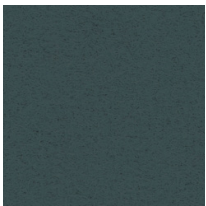
CUZ1W



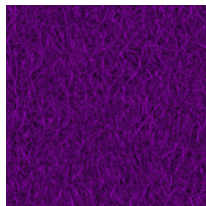
CUZ1Y



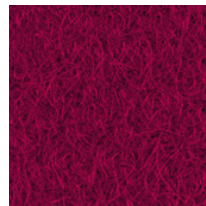
CUZ1L



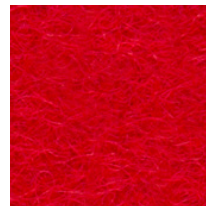
CUZ1P



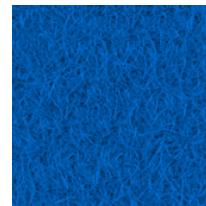
CUZ2A



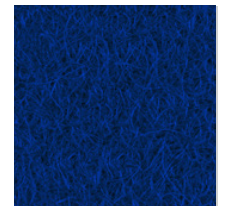
CUZ89



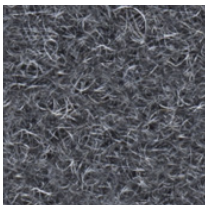
CUZ18



CUZ26



CUZ09



CUZ30



CUZ1R

Composition:

100% virgin wool. Non metallic dyestuffs

Weight:460 g/m²**Abrasion resistance:**

50 000 Martindale cycles

Flammability:EN 1021-1, EN 1021-2, BS 7176 low hazard,
UNI 9175 Classe 1.IM**Other:**Environmental: EU Ecolabel Certified.
Renewable and compostable**Material:**100% Schurwolle. Nicht schwermetallhaltige
Farbstoffe**Gewicht:**460 g/m²**Scheuerfestigkeit:**

50 000 Touren Martindale

Brandschutznormen:EN 1021-1, EN 1021-2, BS 7176 low hazard,
UNI 9175 Classe 1.IM**Sonstiges:**Umweltfreundlich: EU Ecolabel zertifiziert
Erneuerbar und kompostierbar**Composition :**

100% pure laine. Teintures non métalliques

Poids :460 g/m²**Résistance à l'abrasion :**

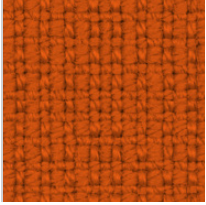
50 000 Cycles Martindales

Résistance au feu :EN 1021-1, EN 1021-2, BS 7176 low hazard,
UNI 9175 Classe 1.IM**Autres :**Favorable à l'environnement : certifié EU Ecolabel,
recyclable et compostable

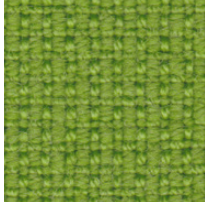
F | Fame

PRICE GROUP | PREISGRUPPE | GROUPE DE PRIX

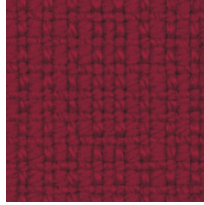
4



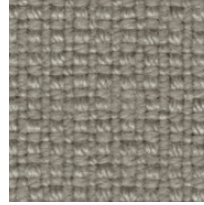
F45



F03



F18



F19



F07



F10

Composition:

95% wool, 5% polyamide

Weight:435 g/m²**Abrasion resistance:**

200 000 Martindale cycles

Flammability:

EN 1021-1, EN 1021-2, BS 5852 source 0, BS 5852 source 1, BS 5852 Crib 5, Calif. Bull. 117E, UNI 9175 Classe 1.IM, NF D 60-013 AM 18, IMO A.652, IMO/MED Certificate

Other:

Environmental: EU Ecolabel certified

Material:

95% Wolle, 5% Polyamide

Gewicht:435 g/m²**Scheuerfestigkeit:**

200 000 Touren Martindale

Brandschutznormen:

EN 1021-1, EN 1021-2, BS 5852 source 0, BS 5852 source 1, BS 5852 Crib 5, Calif. Bull. 117E, UNI 9175 Classe 1.IM, NF D 60-013 AM 18, IMO A.652, IMO/MED Certificate

Sonstiges:

Umweltfreundlich: EU Ecolabel zertifiziert

Composition :

95% laine, 5% polyamide

Poids :435 g/m²**Résistance à l'abrasion :**

200 000 Cycles Martindales

Résistance au feu :

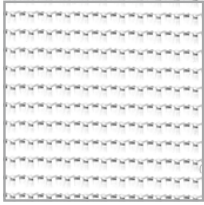
EN 1021-1, EN 1021-2, BS 5852 source 0, BS 5852 source 1, BS 5852 Crib 5, Calif. Bull. 117E, UNI 9175 Classe 1.IM, NF D 60-013 AM 18, IMO A.652, IMO/MED Certificate

Autres :

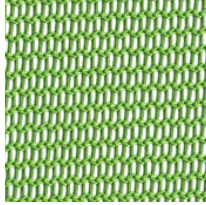
Favorable à l'environnement : certifié EU Ecolabel

OP | Mesh

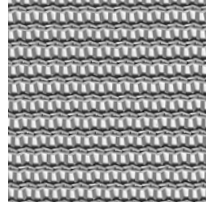
For | Für | Pour **Intrata, Officer-Net, Step, Sit.Net, Iso Ergo Mesh, Taktik**



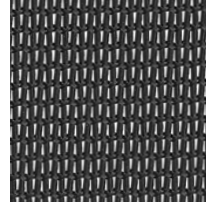
OP20



OP26



OP25



OP24N

Composition:

100% polyester

Weight:

280 g/m²

Abrasion resistance:

60 000 Martindale cycles

Flammability:

EN 1021-1, EN 1021-2 (OP-24N only)

Material:

100% Polyester

Gewicht:

280 g/m²

Scheuerfestigkeit:

60 000 Touren Martindale

Brandschutznormen:

EN 1021-1, EN 1021-2 (nur OP-24N)

Composition :

100% polyester

Poids :

280 g/m²

Résistance à l'abrasion :

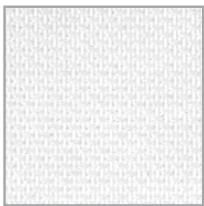
60 000 Cycles Martindales

Résistance au feu :

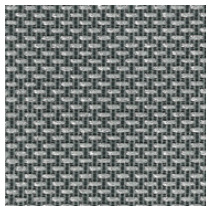
EN 1021-1, EN 1021-2 (OP-24N uniquement)

KR.4921 | Mesh

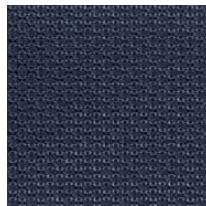
For | Für | Pour **4ME**



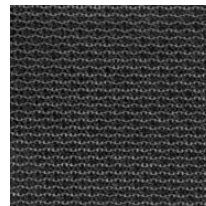
KR.4921.33



KR.4921.16



KR.4921.70



KR.4921.10

Composition:

66% polyester, 34% polyamide

Weight:

240 g/m²

Abrasion resistance:

200 000 Martindale cycles

Flammability:

EN 1021-1

Material:

66% Polyester, 34% Polyamid

Gewicht:

240 g/m²

Scheuerfestigkeit:

200 000 Touren Martindale

Brandschutznormen:

EN 1021-1

Composition :

66% polyester, 34% polyamide

Poids :

240 g/m²

Résistance à l'abrasion :

200 000 Cycles Martindales

Résistance au feu :

EN 1021-1