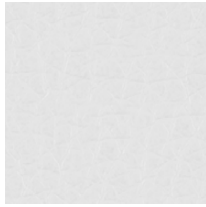


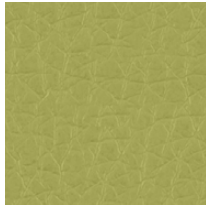
KN | Kaiman

PRICE GROUP | PREISGRUPPE | GROUPE DE PRIX

1



KN03



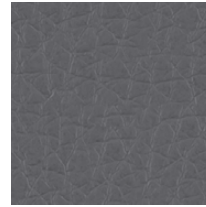
KN429



KN143



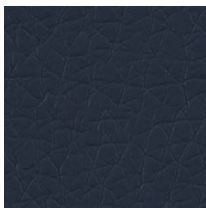
KN75/01



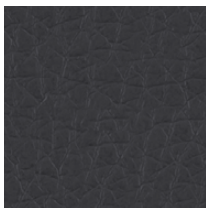
KN484



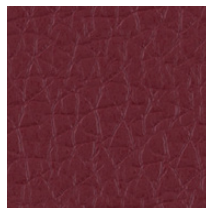
KN32



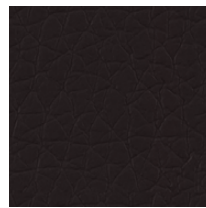
KN49



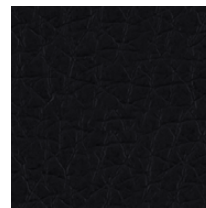
KN755



KN615



KN250



KN780

Composition:

upper layer: 100% polyurethane
bottom layer: 65% polyester, 35% cotton

Weight:

435 g/m²

Abrasion resistance:

100 000 Martindale cycles

Flammability:

BS 5852 Source 0

Other:

Hydrolyse (DIN EN ISO 32100 (DIN 53351) / DIN 53359) - 15 000 cycles

Material:

Deckmaterial: 100% Polyurethane
Trägermaterial: 65% Polyester, 35% Baumwolle

Gewicht:

435 g/m²

Scheuerfestigkeit:

100 000 Touren Martindale

Brandschutznormen:

BS 5852 Source 0

Sonstiges:

Hydrolyse (DIN EN ISO 32100 (DIN 53351) / DIN 53359) - 15 000 Touren

Composition :

Couche supérieure: 100% polyuréthane
Couche inférieure: 65% polyester, 35% coton

Poids :

435 g/m²

Résistance à l'abrasion :

100 000 Cycles Martindales

Résistance au feu :

BS 5852 Source 0

Autres :

Hydrolysis (DIN EN ISO 32100 (DIN 53351) / DIN 53359) - 15 000 cycles

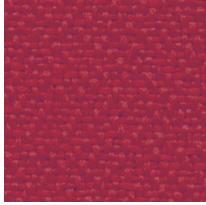
YB | Lucia

PRICE GROUP | PREISGRUPPE | GROUPE DE PRIX

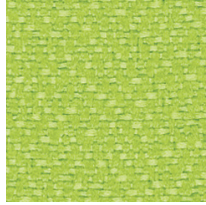
1



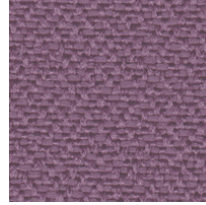
YB130



YB105



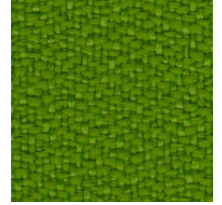
YB156



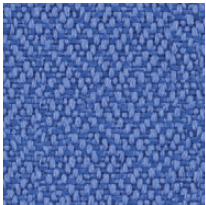
YB102



YB090



YB200



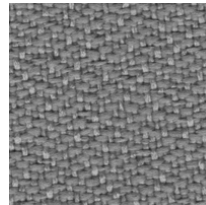
YB097



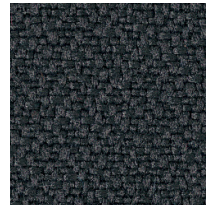
YB026



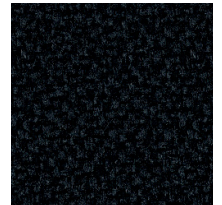
YB093



YB094



YB046



YB009

Composition:

100% recycled polyester. Non metallic dyestuffs

Weight:

260 g/m²

Abrasion resistance:

50 000 Martindale cycles

Flammability:

EN 1021-1, EN 1021-2, BS 7176 low hazard, BS 476 Class 1

Other:

Environmental: EU Ecolabel certified, recyclable

Material:

100% recyceltes Polyester. Nicht schwermetallhaltige Farbstoffe

Gewicht:

260 g/m²

Scheuerfestigkeit:

50 000 Touren Martindale

Brandschutznormen:

EN 1021-1, EN 1021-2, BS 7176 low hazard, BS 476 Class 1

Sonstiges:

Umweltfreundlich: EU Ecolabel zertifiziert, recyclingfähig

Composition :

100% polyester recyclé. Teintures non métalliques

Poids :

260 g/m²

Résistance à l'abrasion :

50 000 Cycles Martindales

Résistance au feu :

EN 1021-1, EN 1021-2, BS 7176 low hazard, BS 476 Class 1

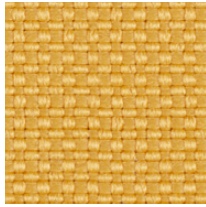
Autres :

Favorable à l'environnement : certifié EU Ecolabel, recyclable

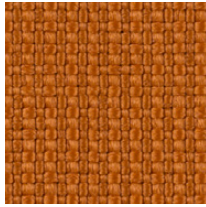
SM | Sempre

PRICE GROUP | PREISGRUPPE | GROUPE DE PRIX

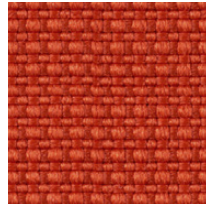
1



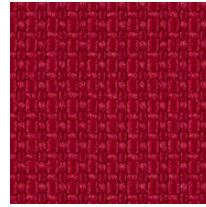
SM11



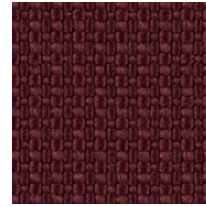
SM10



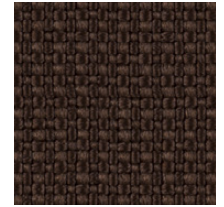
SM09



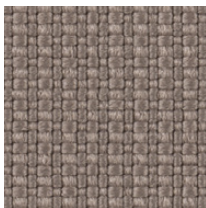
SM12



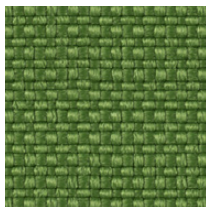
SM06



SM05



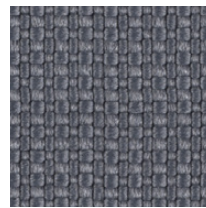
SM04



SM08



SM07



SM03



SM02



SM01

Composition:

100% polyester

Weight:

366 g/m²

Abrasion resistance:

160 000 Martindale cycles

Flammability:

EN 1021-1, EN 1021-2

Material:

100% Polyester

Gewicht:

366 g/m²

Scheuerfestigkeit:

160 000 Touren Martindale

Brandschutznormen:

EN 1021-1, EN 1021-2

Composition :

100% polyester

Poids :

366 g/m²

Résistance à l'abrasion :

160 000 Cycles Martindales

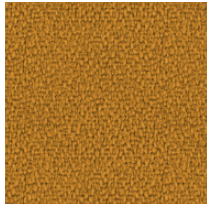
Résistance au feu :

EN 1021-1, EN 1021-2

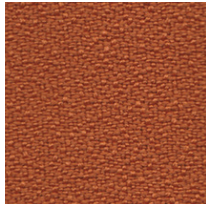
BN | Bondai

PRICE GROUP | PREISGRUPPE | GROUPE DE PRIX

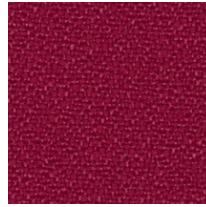
1



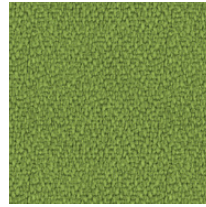
BN3005



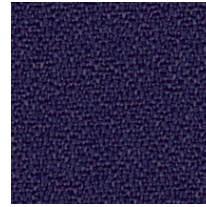
BN3012



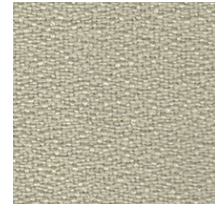
BN4011



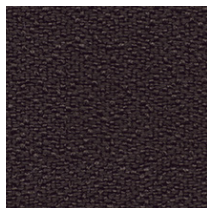
BN7048



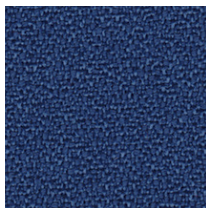
BN5004



BN1005



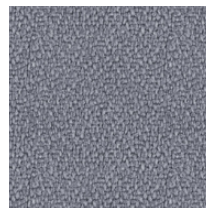
BN2036



BN6016



BN1008



BN8078



BN8010



BN8033

Composition:

100% polyester

Weight:

250 g/m²

Abrasion resistance:

150 000 Martindale cycles

Flammability:

EN 1021-1, EN 1021-2, BS 7176 medium hazard,
BS 5852 Crib 5

Material:

100% Polyester

Gewicht:

250 g/m²

Scheuerfestigkeit:

150 000 Touren Martindale

Brandschutznormen:

EN 1021-1, EN 1021-2, BS 7176 medium hazard,
BS 5852 Crib 5

Composition :

100% polyester

Poids :

250 g/m²

Résistance à l'abrasion :

150 000 Cycles Martindales

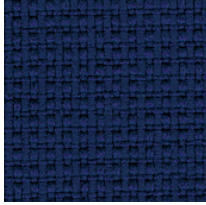
Résistance au feu :

EN 1021-1, EN 1021-2, BS 7176 medium hazard,
BS 5852 Crib 5

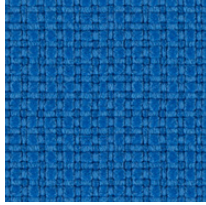
YN | Contract

PRICE GROUP | PREISGRUPPE | GROUPE DE PRIX

2



YN210



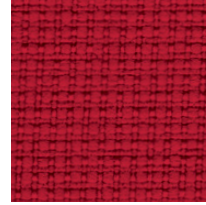
YN202



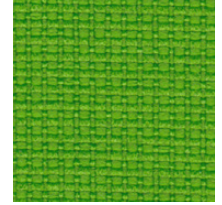
YN204



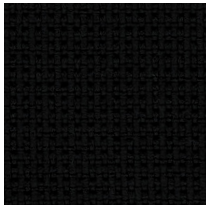
YN206



YN079



YN200



YN009

Composition:

100% recycled polyester. Non metallic dyestuffs

Weight:320 g/m²**Abrasion resistance:**

100 000 Martindale cycles

Flammability:

EN 1021-1, EN 1021-2, BS 7176 low hazard, BS 7176 medium hazard, BS 5852 Crib 5, NF P 503 M1, DIN 4102 B1, UNI 9174 Classe 1

Other:

Environmental: EU Ecolabel certified, recyclable

Material:

100% recyceltes Polyester. Nicht schwermetallhaltige Farbstoffe

Gewicht:320 g/m²**Scheuerfestigkeit:**

100 000 Touren Martindale

Brandschutznormen:

EN 1021-1, EN 1021-2, BS 7176 low hazard, BS 7176 medium hazard, BS 5852 Crib 5, NF P 503 M1, DIN 4102 B1, UNI 9174 Classe 1

Sonstiges:

Umweltfreundlich: EU Ecolabel zertifiziert, recyclingfähig

Composition :

100% polyester recyclé. Teintures non métalliques

Poids :320 g/m²**Résistance à l'abrasion :**

100 000 Cycles Martindales

Résistance au feu :

EN 1021-1, EN 1021-2, BS 7176 low hazard, BS 7176 medium hazard, BS 5852 Crib 5, NF P 503 M1, DIN 4102 B1, UNI 9174 Classe 1

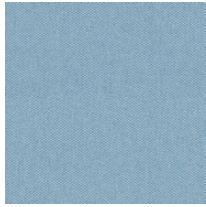
Autres :

Favorable à l'environnement : certifié EU Ecolabel, recyclable

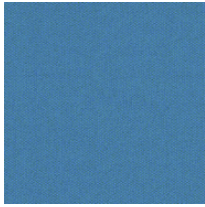
CSE | Era

PRICE GROUP | PREISGRUPPE | GROUPE DE PRIX

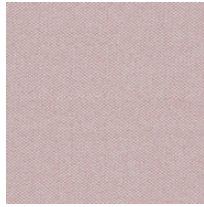
2



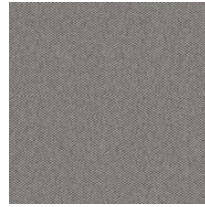
CSE20



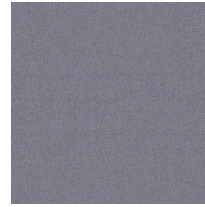
CSE10



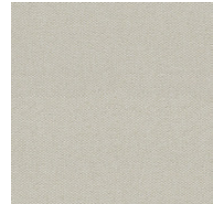
CSE19



CSE02



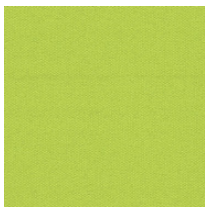
CSE11



CSE01



CSE03



CSE07



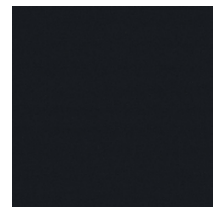
CSE16



CSE13



CSE21



CSE14

Composition:

100% polyester. Non metallic dyestuffs

Weight:320 g/m²**Abrasion resistance:**

≥100 000 Martindale cycles

Flammability:

EN 1021-1, EN 1021-2, BS 7176 low hazard

Material:

100% Polyester. Nicht schwermetallhaltige Farbstoffe

Gewicht:320 g/m²**Scheuerfestigkeit:**

≥100 000 Touren Martindale

Brandschutznormen:

EN 1021-1, EN 1021-2, BS 7176 low hazard

Composition :

100% polyester. Teintures non métalliques

Poids :320 g/m²**Résistance à l'abrasion :**

≥100 000 Cycles Martindales

Résistance au feu :

EN 1021-1, EN 1021-2, BS 7176 low hazard

VL | Valencia

PRICE GROUP | PREISGRUPPE | GROUPE DE PRIX

2



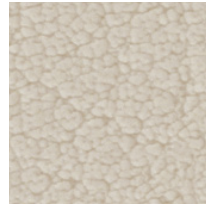
VL6012



VL6019



VL2074



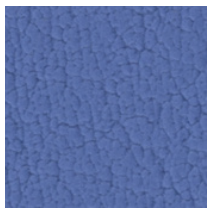
VL1048



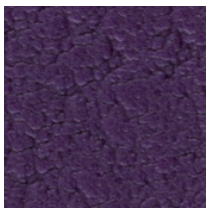
VL0034



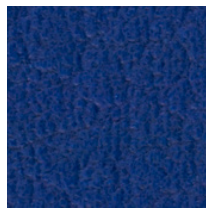
VL0020



VL3001



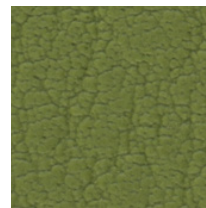
VL7001



VL3067



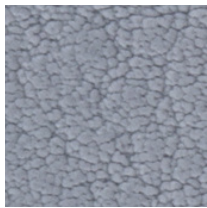
VL5041



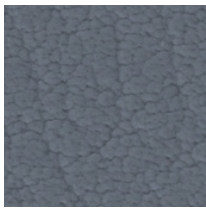
VL5001



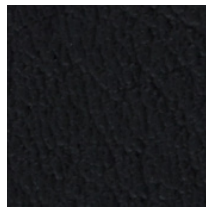
VL4041



VL4045



VL4043



VL9035

Composition:

upper layer: 100% vinyl
bottom layer: 100% Hi-Loft polyester

Weight:

650 g/m²

Abrasion resistance:

300 000 Martindale cycles

Flammability:

EN 1021-1, EN 1021-2, DIN 4102 B2, NF P 92-503
M2, Önorm B 3825, Önorm A 3800-1 Q1

Other:

EN 71-3 Safety of toys (migration of certain elements)
PERMABLOK3® – superior antibacterial, antistain and
antifungal protection

Material:

Deckmaterial: 100% Vinyl
Trägergewebe: 100% Hi-Loft polyester

Gewicht:

650 g/m²

Scheuerfestigkeit:

300 000 Touren Martindale

Brandschutznormen:

EN 1021-1, EN 1021-2, DIN 4102 B2, NF P 92-503
M2, Önorm B 3825, Önorm A 3800-1 Q1

Sonstiges:

EN 71-3 Sicherheit von Spielzeugen (Ausdünstung)
PERMABLOK3® – antimikrobiell ausgerüstet,
chemikalienbeständig und schmutzabweisend

Composition :

Couche supérieure : 100% vinyle
Couche inférieure : 100% polyester Hi-Loft

Poids :

650 g/m²

Résistance à l'abrasion :

300 000 Cycles Martindales

Résistance au feu :

EN 1021-1, EN 1021-2, DIN 4102 B2, NF P 92-503
M2, Önorm B 3825, Önorm A 3800-1 Q1

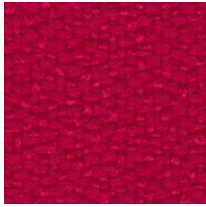
Autres :

EN 71-3 Sécurité des jouets (migration spécifique
de certains éléments)
PERMABLOK3® – traitement de protection,
antibactérien, antitaches et antifongique

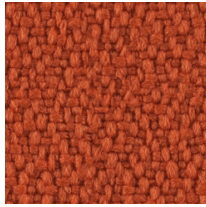
XR | Xtreme

PRICE GROUP | PREISGRUPPE | GROUPE DE PRIX

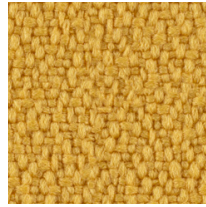
2



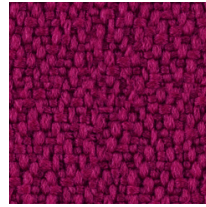
XR079



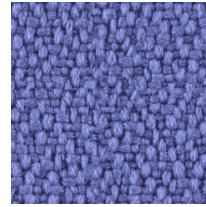
XR076



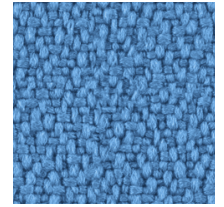
XR072



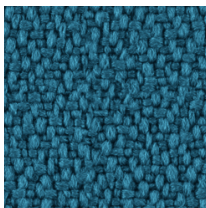
XR101



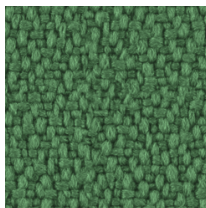
XR069



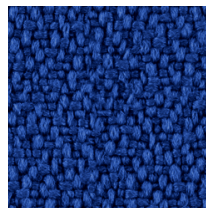
XR073



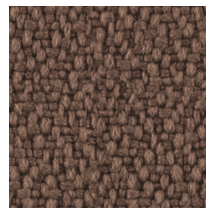
XR160



XR159



XR005



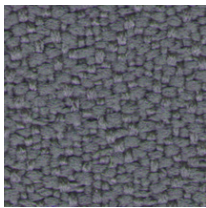
XR091



XR108



XR026



XR081



XR009

Composition:

100% recycled polyester. Non metallic dyestuffs

Weight:310 g/m²**Abrasion resistance:**

100 000 Martindale cycles

Flammability:

EN 1021-1, EN 1021-2, BS 7176 low hazard, BS 7176 medium hazard, BS 5852 Crib 5, DIN 4102 B1, UNI 9174 Classe 1

Other:

Environmental: EU Ecolabel certified, recyclable

Material:

100% recyceltes Polyester. Nicht schwermetallhaltige Farbstoffe

Gewicht:310 g/m²**Scheuerfestigkeit:**

100 000 Touren Martindale

Brandschutznormen:

EN 1021-1, EN 1021-2, BS 7176 low hazard, BS 7176 medium hazard, BS 5852 Crib 5, DIN 4102 B1, UNI 9174 Classe 1

Sonstige:

Umweltfreundlich: EU Ecolabel zertifiziert, recyclingfähig

Composition :

100% polyester recyclé. Teintures non métalliques

Poids :310 g/m²**Résistance à l'abrasion :**

100 000 Cycles Martindales

Résistance au feu :

EN 1021-1, EN 1021-2, BS 7176 low hazard, BS 7176 medium hazard, BS 5852 Crib 5, DIN 4102 B1, UNI 9174 Classe 1

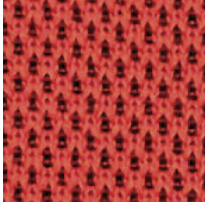
Autres :

Favorable à l'environnement : certifié EU Ecolabel, recyclable

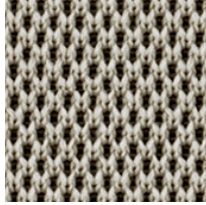
UNY | Nexus

PRICE GROUP | PREISGRUPPE | GROUPE DE PRIX

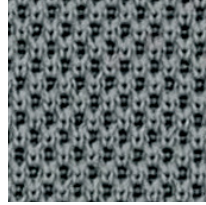
2



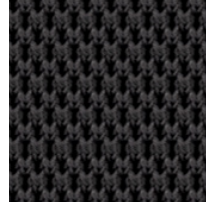
UNY04



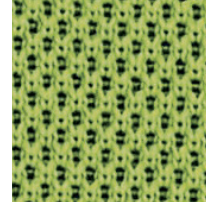
UNY02



UNY01



UNY11



UNY05

Composition:

100% polyester

Weight:

300 g/m²

Abrasion resistance:

100 000 Martindale cycles

Flammability:

EN 1021-1, EN 1021-2, BS 7176 low hazard

Material:

100% Polyester

Gewicht:

300 g/m²

Scheuerfestigkeit:

100 000 Touren Martindale

Brandschutznormen:

EN 1021-1, EN 1021-2, BS 7176 low hazard

Composition :

100% polyester

Poids :

300 g/m²

Résistance à l'abrasion :

100 000 Cycles Martindales

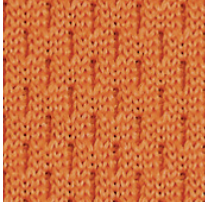
Résistance au feu :

EN 1021-1, EN 1021-2, BS 7176 low hazard

XF | Flex

PRICE GROUP | PREISGRUPPE | GROUPE DE PRIX

3



XF63035



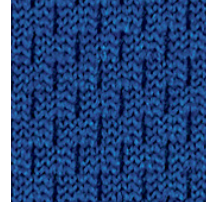
XF64089



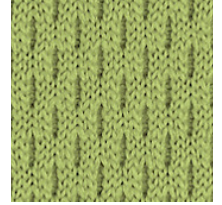
XF65037



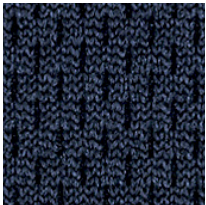
XF61078



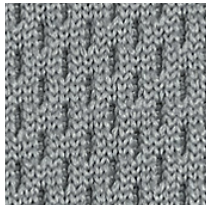
XF66062



XF68056



XF66065



XF60011



XF60025



XF60999

Composition:

100% polyester

Weight:450 g/m²**Abrasion resistance:**

80 000 Martindale cycles

Flammability:

EN 1021-1, EN 1021-2, Calif. Bull. 117E, Önorm B 3825, Önorm A 3800-1 Q1

Material:

100% Polyester

Gewicht:450 g/m²**Scheuerfestigkeit:**

80 000 Touren Martindale

Brandschutznormen:

EN 1021-1, EN 1021-2, Calif. Bull. 117E, Önorm B 3825, Önorm A 3800-1 Q1

Composition :

100% polyester

Poids :450 g/m²**Résistance à l'abrasion :**

80 000 Cycles Martindales

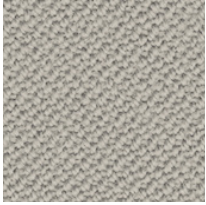
Résistance au feu :

EN 1021-1, EN 1021-2, Calif. Bull. 117E, Önorm B 3825, Önorm A 3800-1 Q1

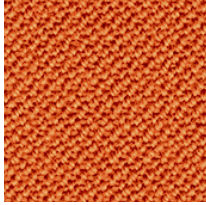
OX | Oxygen

PRICE GROUP | PREISGRUPPE | GROUPE DE PRIX

3



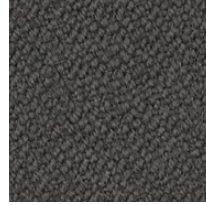
OX039



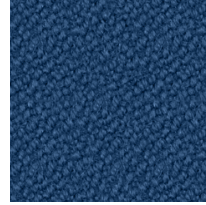
OX035



OX023



OX010



OX007



OX001

Composition:

90% wool, 10% polyamide

Weight:

400 g/m²

Abrasion resistance:

100 000 Martindale cycles

Flammability:

EN 1021-1, EN 1021-2, BS 7176 low hazard,
UNI 9175 Classe 1.IM

Material:

90% Wolle, 10% Polyamide

Gewicht:

400 g/m²

Scheuerfestigkeit:

100 000 Touren Martindale

Brandschutznormen:

EN 1021-1, EN 1021-2, BS 7176 low hazard,
UNI 9175 Classe 1.IM

Composition :

90% laine, 10% polyamide

Poids :

400 g/m²

Résistance à l'abrasion :

100 000 Cycles Martindales

Résistance au feu :

EN 1021-1, EN 1021-2, BS 7176 low hazard,
UNI 9175 Classe 1.IM

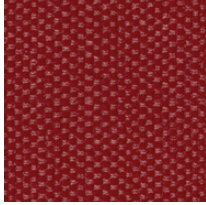
SX | Silvertex

PRICE GROUP | PREISGRUPPE | GROUPE DE PRIX

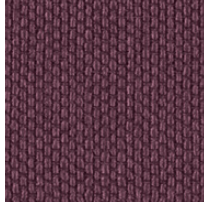
3



SX0009



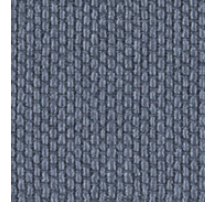
SX2011



SX2016



SX5008



SX4002



SX4001



SX3066



SX4024

Composition:

upper layer: 100% vinyl
bottom layer: 100% Hi-Loft polyester

Weight:

685 g/m²

Abrasion resistance:

300 000 Martindale cycles

Flammability:

EN 1021-1, EN 1021-2, DIN 4102 B1, NF P 92-503
M2, Önorm B 3825, Önorm A 3800-1 Q1

Other:

PERMABLOK3® - superior antibacterial, antistain and antifungal protection
SILVERGUARD® - natural environmentally friendly bacteria fighting defense to inhibit odour and stain causing bacteria (silver ion technology)

Material:

Deckmaterial: 100% Vinyl
Trägergewebe: 100% Hi-Loft Polyester

Gewicht:

685 g/m²

Scheuerfestigkeit:

300 000 Touren Martindale

Brandschutznormen:

EN 1021-1, EN 1021-2, DIN 4102 B1, NF P 92-503
M2, Önorm B 3825, Önorm A 3800-1 Q1

Sonstiges:

PERMABLOK3® - antimikrobiell ausgerüstet, chemikalienbeständig und schmutzabweisend
SILVERGUARD® - verhindert dauerhaft und auf natürliche Weise die Neubildung von Mikroorganismen und die dadurch verursachte Flecken- und Geruchsbildung (Silberionen-Technologie)

Composition :

Couche supérieure : 100% vinyle
Couche inférieure : 100% polyester Hi-Loft

Poids :

685 g/m²

Résistance à l'abrasion :

300 000 Cycles Martindales

Résistance au feu :

EN 1021-1, EN 1021-2, DIN 4102 B1, NF P 92-503
M2, Önorm B 3825, Önorm A 3800-1 Q1

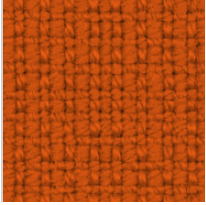
Autres :

PERMABLOK3® - traitement de protection, antibactérien, antitaches et antifongique
SILVERGUARD® - traitement antibactérien (anti odeur et antitaches), respectueux de l'environnement (à base d'ions d'argent)

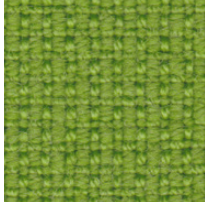
F | Fame

PRICE GROUP | PREISGRUPPE | GROUPE DE PRIX

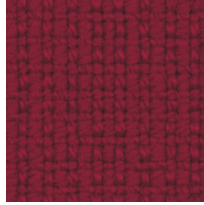
4



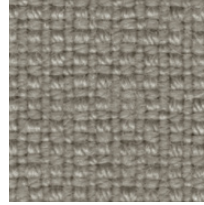
F45



F03



F18



F19



F07



F10

Composition:

95% wool, 5% polyamide

Weight:435 g/m²**Abrasion resistance:**

200 000 Martindale cycles

Flammability:

EN 1021-1, EN 1021-2, BS 5852 source 0, BS 5852 source 1, BS 5852 Crib 5, Calif. Bull. 117E, UNI 9175 Classe 1.IM, NF D 60-013 AM 18, IMO A.652, IMO/MED Certificate

Other:

Environmental: EU Ecolabel certified

Material:

95% Wolle, 5% Polyamide

Gewicht:435 g/m²**Scheuerfestigkeit:**

200 000 Touren Martindale

Brandschutznormen:

EN 1021-1, EN 1021-2, BS 5852 source 0, BS 5852 source 1, BS 5852 Crib 5, Calif. Bull. 117E, UNI 9175 Classe 1.IM, NF D 60-013 AM 18, IMO A.652, IMO/MED Certificate

Sonstiges:

Umweltfreundlich: EU Ecolabel zertifiziert

Composition :

95% laine, 5% polyamide

Poids :435 g/m²**Résistance à l'abrasion :**

200 000 Cycles Martindales

Résistance au feu :

EN 1021-1, EN 1021-2, BS 5852 source 0, BS 5852 source 1, BS 5852 Crib 5, Calif. Bull. 117E, UNI 9175 Classe 1.IM, NF D 60-013 AM 18, IMO A.652, IMO/MED Certificate

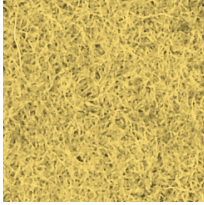
Autres :

Favorable à l'environnement : certifié EU Ecolabel

CUZ | Blazer

PRICE GROUP | PREISGRUPPE | GROUPE DE PRIX

4



CUZ58



CUZ85



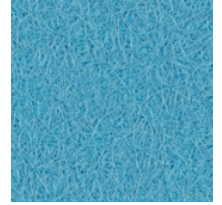
CUZ90



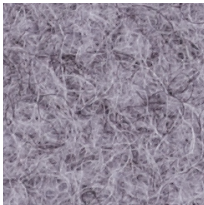
CUZ21



CUZ1Z



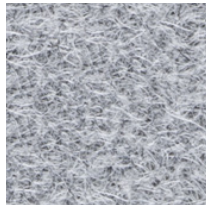
CUZ02



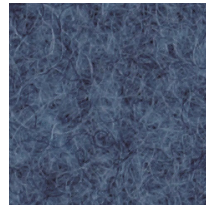
CUZ1S



CUZ28



CUZ1E



CUZ1W



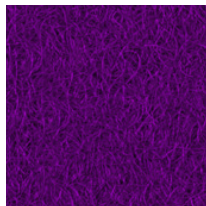
CUZ1Y



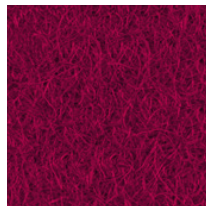
CUZ1L



CUZ1P



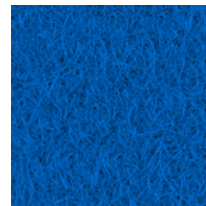
CUZ2A



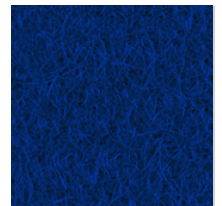
CUZ89



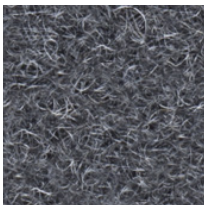
CUZ18



CUZ26



CUZ09



CUZ30



CUZ1R

Composition:

100% virgin wool. Non metallic dyestuffs

Weight:460 g/m²**Abrasion resistance:**

50 000 Martindale cycles

Flammability:EN 1021-1, EN 1021-2, BS 7176 low hazard,
UNI 9175 Classe 1.IM**Other:**Environmental: EU Ecolabel Certified.
Renewable and compostable**Material:**100% Schurwolle. Nicht schwermetallhaltige
Farbstoffe**Gewicht:**460 g/m²**Scheuerfestigkeit:**

50 000 Touren Martindale

Brandschutznormen:EN 1021-1, EN 1021-2, BS 7176 low hazard,
UNI 9175 Classe 1.IM**Sonstiges:**Umweltfreundlich: EU Ecolabel zertifiziert
Erneuerbar und kompostierbar**Composition :**

100% pure laine. Teintures non métalliques

Poids :460 g/m²**Résistance à l'abrasion :**

50 000 Cycles Martindales

Résistance au feu :EN 1021-1, EN 1021-2, BS 7176 low hazard,
UNI 9175 Classe 1.IM**Autres :**Favorable à l'environnement : certifié EU Ecolabel,
recyclable et compostable

LDS | Synergy

PRICE GROUP | PREISGRUPPE | GROUPE DE PRIX

4

**Composition:**

95% wool, 5% polyamide

Weight:400 g/m²**Abrasion resistance:**

100 000 Martindale cycles

Flammability:EN 1021-1, EN 1021-2, BS 7176 low hazard,
UNI 9175 Classe 1.IM, NF D 60-013 AM18,
Önorm B 3825, Önorm A 3800-1 Q1**Material:**

95% Wolle, 5% Polyamid

Gewicht:400 g/m²**Scheuerfestigkeit:**

100 000 Touren Martindale

Brandschutznormen:EN 1021-1, EN 1021-2, BS 7176 low hazard,
UNI 9175 Classe 1.IM, NF D 60-013 AM18,
Önorm B 3825, Önorm A 3800-1 Q1**Composition :**

95% laine, 5% polyamide

Poids :400 g/m²**Résistance à l'abrasion :**

100 000 Cycles Martindales

Résistance au feu :EN 1021-1, EN 1021-2, BS 7176 low hazard,
UNI 9175 Classe 1.IM, NF D 60-013 AM18,
Önorm B 3825, Önorm A 3800-1 Q1

LE | Fine Leather LE

PRICE GROUP | PREISGRUPPE | GROUPE DE PRIX

5



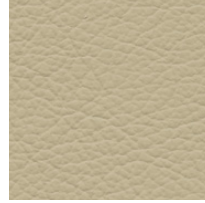
LE14



LE13



LE01



LE06

Composition:

soft grain leather (0,9–1,1 mm), thoroughly dyed

Material:

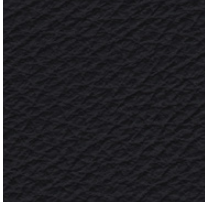
weiches Oberleder (0,9–1,1 mm), durchgefärbt

Composition :cuir pleine fleur corrigé (épaisseur 0,9–1,1 mm),
entièrement teinté

Q | Fine Leather Q

PRICE GROUP | PREISGRUPPE | GROUPE DE PRIX

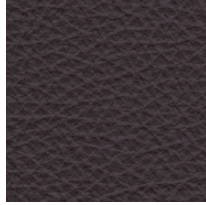
5



Q1



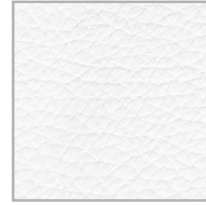
Q7



Q9



Q2



Q12



Q10



Q14

Composition:

soft grain leather (1,2-1,4 mm), thoroughly dyed

Material:

weiches Oberleder (1,2-1,4 mm), durchgefärbt

Composition :

cuir pleine fleur corrigé (épaisseur 1,2-1,4 mm), entièrement teinté

SD | Fine Leather SD

PRICE GROUP | PREISGRUPPE | GROUPE DE PRIX

5



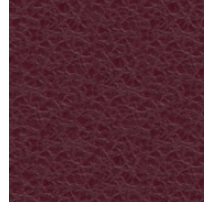
SD06



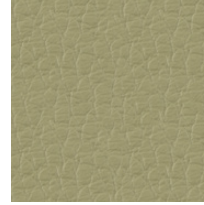
SD16



SD04



SD03



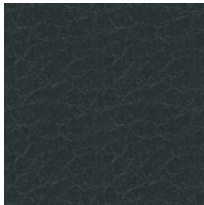
SD07



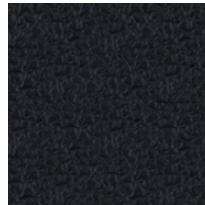
SD09



SD15



SD08



SD01

Composition:

soft grain leather (0,9-1,1 mm), thoroughly dyed

Material:

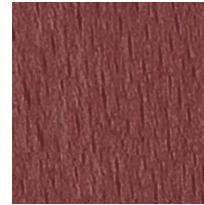
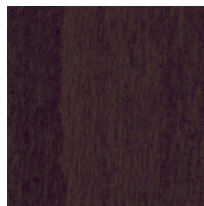
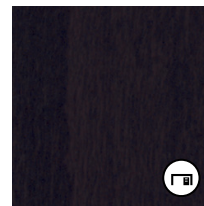
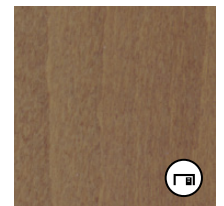
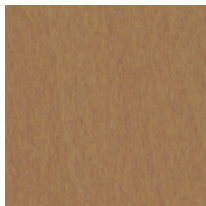
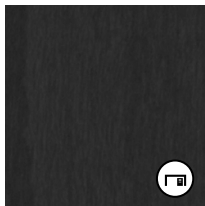
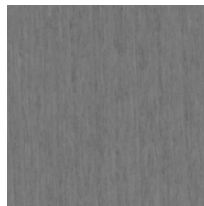
weiches Oberleder (0,9-1,1 mm), durchgefärbt

Composition :

cuir pleine fleur corrigé (épaisseur 0,9-1,1 mm), entièrement teinté

Wood & Plywood

| Beiztöne Schichtholz | Bois & hêtre multiplis

1.007 / ON 1.007
Beech1.040
Alder1.010 / ON 1.010
Orange1.008 / ON 1.008
Cognac1.016 / ON 1.016
Mahogany1.042
Cherry1.023
Palisander1.031 / ON 1.031
Walnut1.033 / ON 1.033
Wenge1.043
Black1.032
Colombo1.076
Havana1.025
Calvados1.06R
Beech Grey1.06S
Slate

"ON" symbols refer to veneered table tops.

| Mit „ON“ gekennzeichnete Oberflächen beziehen sich auf Furnieroberflächen.

| Les symboles «ON» se réfèrent aux coloris des plateaux en placage bois.



Veneer furniture colour matching
wood/plywood furniture colour:

CB Veneer = 1.032 (Colombo)
LV Veneer = 1.076 (Havana)
BG Veneer = 1.06R (Beech Grey)



Die abgebildeten Beiztöne sind identisch mit folgenden
Furnieroberflächen für Möbel:

CB Furnier = 1.032 (Colombo)
LV Furnier = 1.076 (Havana)
BG Furnier = 1.06R (Beech Grey)



Couleurs de meubles en placage bois assorties aux
couleurs de meubles en bois / multiplis:

CB Placage bois = 1.032 (Colombo)
LV Placage bois = 1.076 (Havana)
BG Placage bois = 1.06R (Beech Grey)