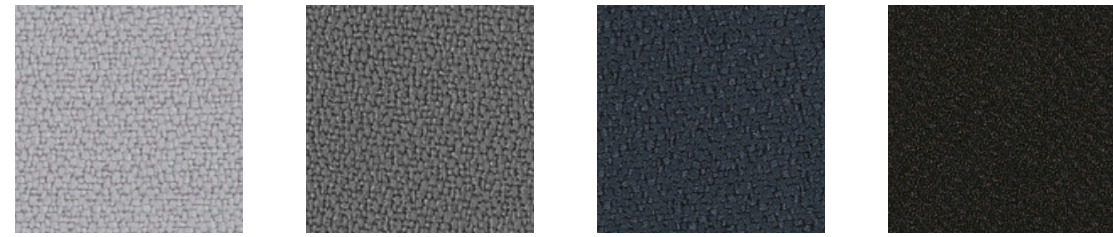
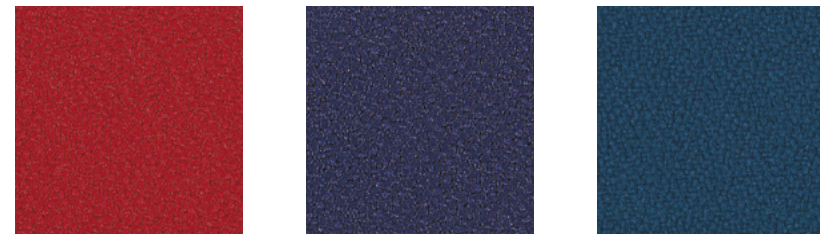


Xtreme – 100% recycled polyester – crêpe structure – stretchy – durable

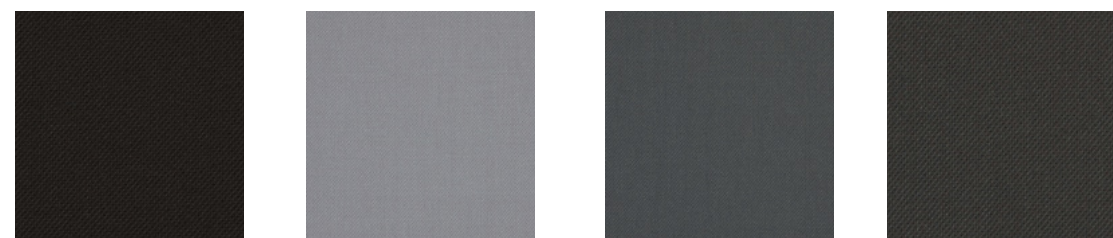


Xtreme – EXR094    Xtreme – EXR081    Xtreme – EXR145    Xtreme – EXR009



Xtreme – EXR079    Xtreme – EXR024    Xtreme – EXR026

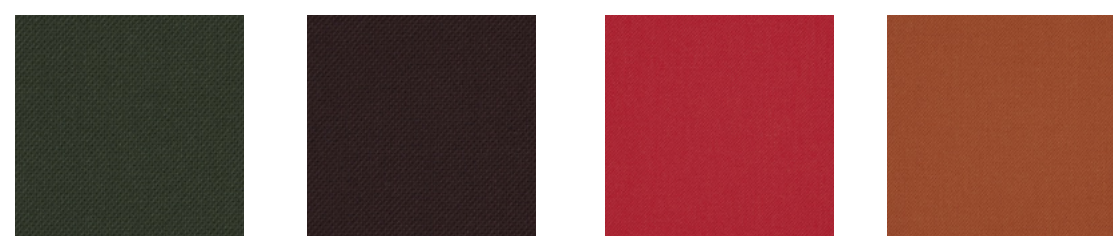
Select – New Zealand wool – diagonal relief structure – soft – durable



Select - SC 60999    Select - SC 60139    Select - SC 60003    Select - SC 60134

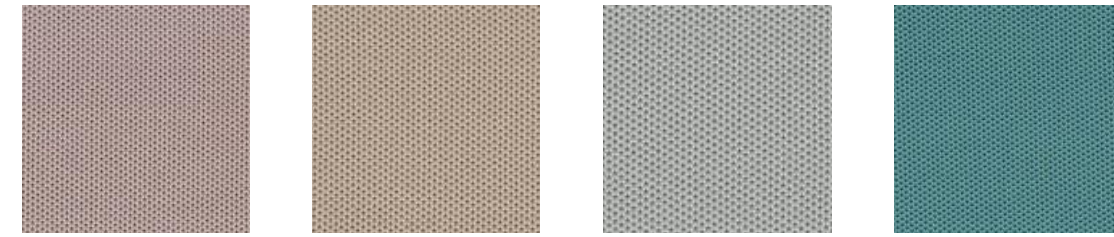


Select - SC 60051    Select - SC 66194    Select - SC 66071    Select - SC 66144



Select - SC 68209    Select - SC 61190    Select - SC 64216    Select - SC 63102

Sprint – Polyester knit – classic design – stretch knit product



Sprint – SRT002    Sprint – SRT001    Sprint – SRT028    Sprint – SRT041

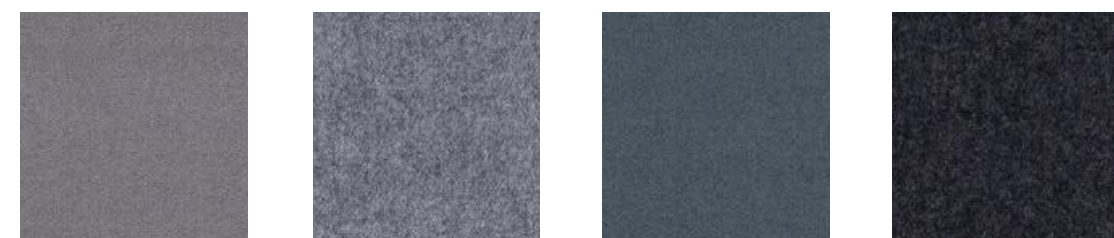


Sprint – SRT042    Sprint – SRT004    Sprint – SRT010

Synergy – Wool – lightly felted – soft – durable



Synergy – LDS74    Synergy – LDS75    Synergy – LDS54    Synergy – LDS49



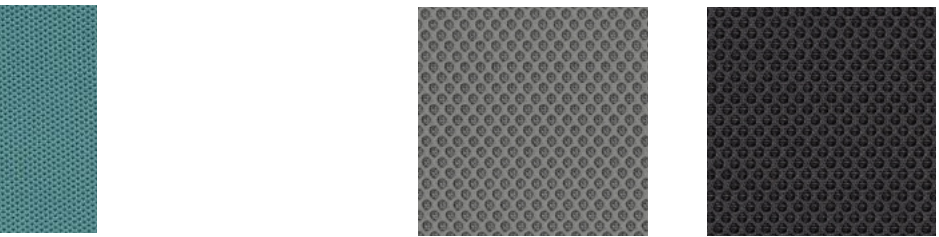
Synergy – LDS31    Synergy – LDS16    Synergy – LDS24    Synergy – LDS17

Paloma soft – Semi-aniline leather – chrome-free – soft – high durability

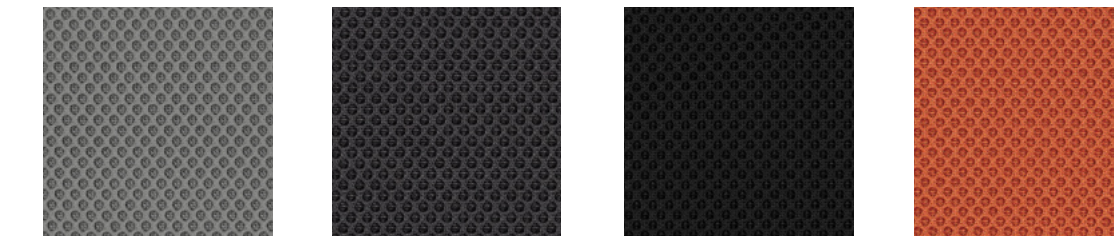


Paloma Soft – ATG55115    Paloma Soft – ATG56100    Paloma Soft – ATG55130

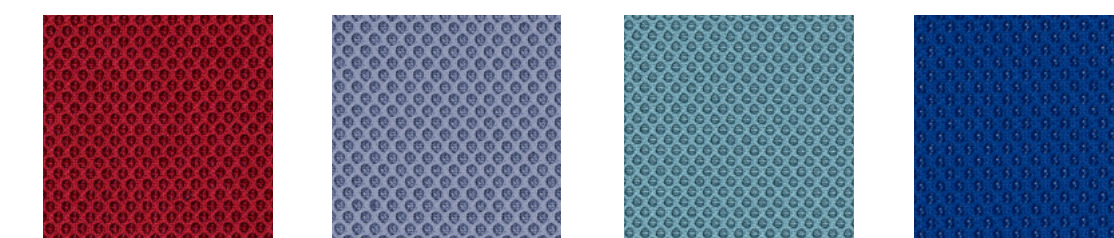
HÅG Conventio Wing / HÅG Capisco Puls



Runner – 100% recyclable polyester – soft 3D appearance – semi-transparent – mesh fabric



Runner – RUN64089    Runner – RUN65078    Runner – RUN66063    Runner – RUN66120

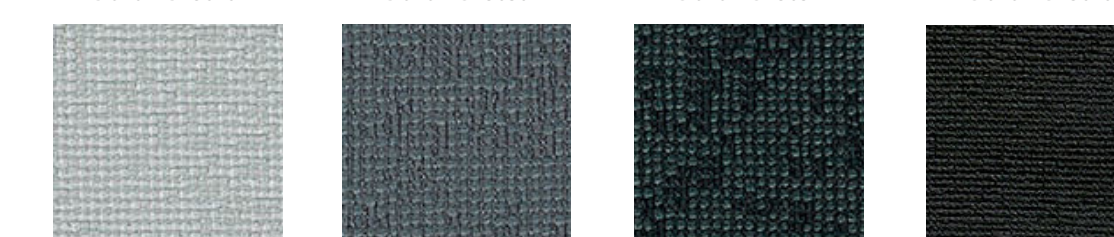


Runner – RUN66123    Runner – RUN68056    Runner – RUN68109    Runner – RUN68137

Grano



Grano – GRO010    Grano – GRO030    Grano – GRO051    Grano – GRO070



Grano – GRO091    Grano – GRO092    Grano – GRO094    Grano – GRO099

Natura



Natura – LE 120    Natura – LE 121    Natura – LE 124

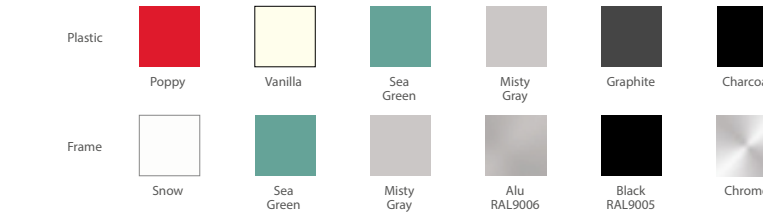
Giroflex 353 /313

Mesh by Palmhive

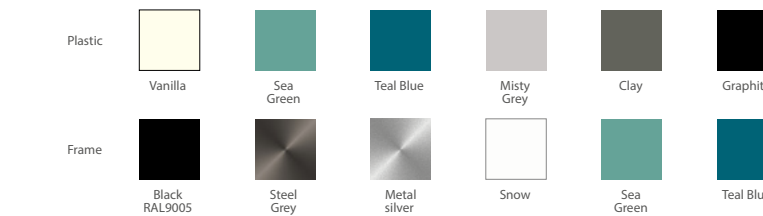


MEH001 - black    MEH002 - lightgrey

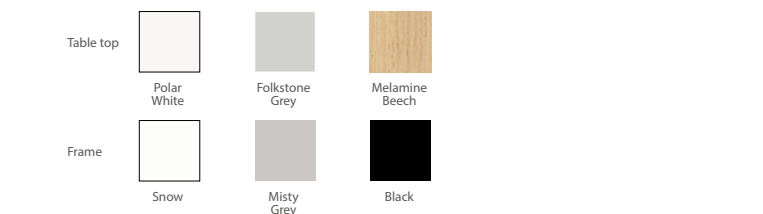
RBM Ana Plastic and Frame Colours



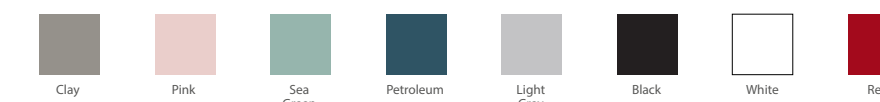
RBM Noor 4-leg (6050 & 6050S) & Sledgebase (6060 & 6060S) Plastic and Frame Colours



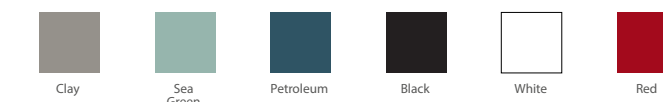
RBM u-Connect Table Top Laminate and Frame Colours



HÅG Capisco Puls Plastic Colours



HÅG Conventio Wing Plastic Colours



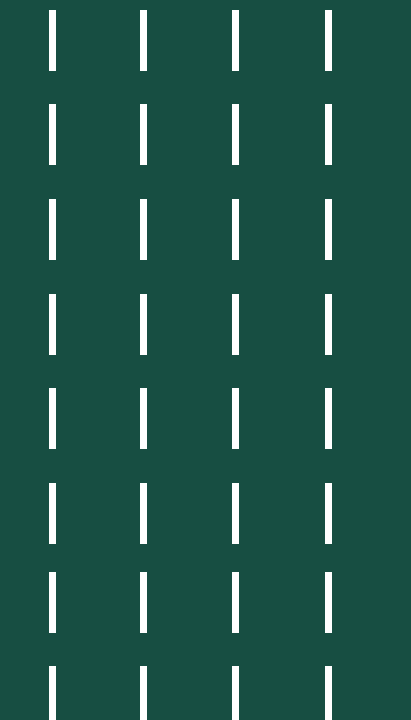
SoFi Mesh





# Fabrics & Colours

for HÅG, RBM & Giroflex in Poland & Eastern Europe



## TECHNICAL SPECIFICATIONS

	XTREME by Camira	SELECT by Gabriel	SPRINT by Camira	SYNERGY by Camira	PALOMA SOFT by Wollsdorf	RUNNER by Gabriel	GRANO by Climatex	NATURA leather	MESH by Palmhive
<b>COMPOSITION (%)</b>									
Wool	-	85	-	95	-	-	18	-	-
Polyamide	-	15	-	5	-	-	69	-	-
Polyester	-	-	100	-	-	100	13	-	100
Recycled Polyester	100	-	-	-	-	-	-	-	-
Bull hides	-	-	-	-	100	-	-	100	-
<b>ENVIRONMENTAL FACTS</b>									
EU Ecolabel	◆	◆	-	◆	-	-	-	-	-
Oeko-Tex® Standard 100	◆	◆	-	-	-	◆	◆	-	◆
ISO 14001 certified (company)	◆	◆	◆	◆	◆	◆	-	-	-
100% free of heavy metals	◆	◆	◆	◆	◆	◆	-	-	-
ECO2L	-	-	-	-	◆	-	-	-	-
Blue Angel RAL-U2 148	-	-	-	-	◆	-	-	◆	-
Chrome-free leather tanning	-	-	-	-	◆	-	-	-	-
Cradle to Cradle	-	-	-	-	-	◆	◆	-	-
<b>FLAMMABILITY</b>									
BS EN 1021 – Cig. & Match	◆	◆	◆	◆	◆	◆	◆	◆	◆
BS 5852 0/1	-	-	-	-	-	-	◆	-	-
BS5852 part 1 source 0,1	-	-	-	-	-	-	-	◆	-
BS 7176 Low Hazard	◆	-	◆	◆	-	-	-	-	-
BS 7176 Medium Hazard	◆	-	-	-	-	-	-	-	-
NF D 60-013	◆	-	-	-	-	-	-	-	-
DIN 4102 BI	◆	-	-	-	-	-	-	-	-
BS 5852 P 2 crib 5	◆	◆	-	-	◆	-	-	-	-
CA TB 117-2013	-	◆	◆	-	-	◆	◆	◆	-
IMO MSC 307 (88) Annex 1 part 8	-	◆	-	-	◆	-	-	-	-
<b>FASTNESS TO RUBBING</b>									
Dry	4	4-5	4	-	1000/4	4-5	4-5	5	-
Wet	4	4-5	4	-	80/4	4-5	4	4	-
<b>OTHER</b>									
Weight (g/m)	435	510	325	400	-	320	450	-	-
Width (cm)	140	140	140	140	-	160	141	-	-
Abrasion (Martindale)	100 000	200 000	100 000	100 000	-	70 000	465 000	-	150 000
Pilling	4	4	4-5	-	-	5	4	-	4-5
Light fastness	6	5-8	6	5	6	5-7	6	5	-

**MAINTENANCE**  
To be vacuumed with a furniture brush or wiped with a clean, white cloth or sponge slightly dampened with clean lukewarm water.

camirafabrics.com  
gabriel.dk  
wollsdorf.com