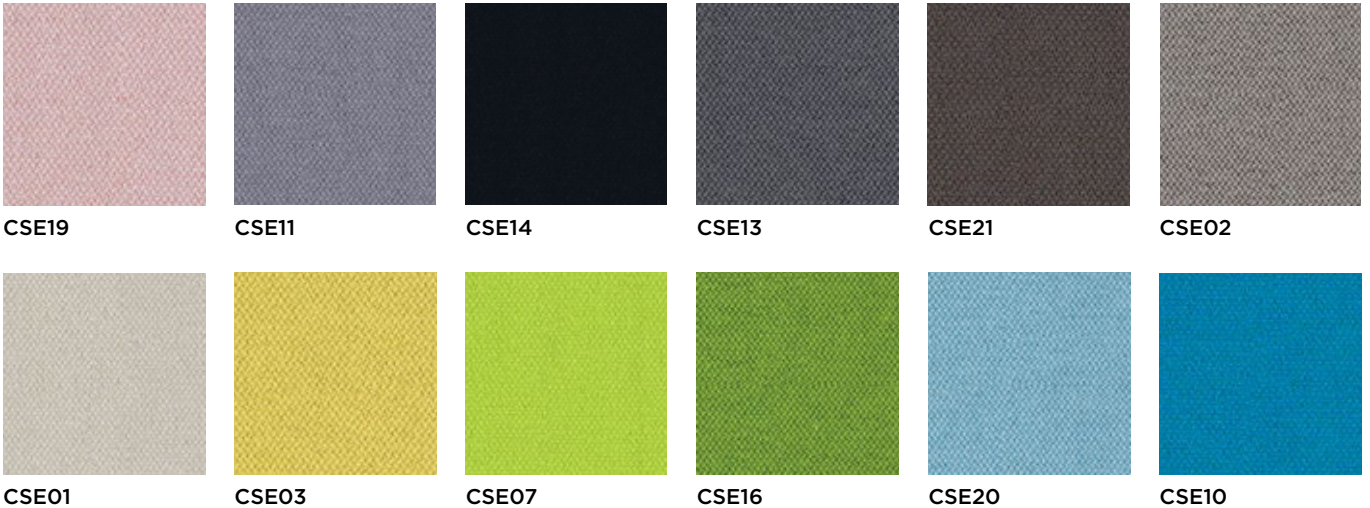


1 Era | CSE



Price group:
Grupa cenowa:
Preisgruppe:
Groupe de prix :

1

Composition:
Skład:
Material:
Composition :

100%

polyester, non metallic dyestuffs
poliester, nie zawiera pigmentów metalicznych
Polyester, nicht schwermetallhaltige Farbstoffe
polyester, teintures non métalliques

Weight:
Gramatura:
Gewicht:
Poids :

320 g/m²

Abrasion resistance:
Odporność na ścieranie:
Scheuerfestigkeit:
Résistance à l'abrasion :

≥100 000

Martindale cycles
cykli Martindale
Touren Martindale
cycles Martindales

Colour fastness to light:
Odporność barwy na światło:
Lichtechtheit:
Résistance de la couleur à la lumière :

EN ISO 105-B02
(min. 5)

Flammability:
Trudnozapałność:
Brandschutznormen:
Résistance au feu :

EN 1021-1,
EN 1021-2
BS 7176 low hazard

Other:
Inne:
Sonstiges:
Autres :

Oeko-Tex Standard 100
certificate

2

Felicity | FLGCigarette
& MatchRecycled
originEnvironmentally
friendlyConfirmed
safety

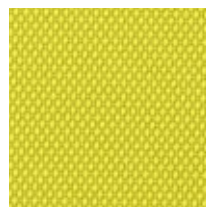
FLG64190



FLG64189



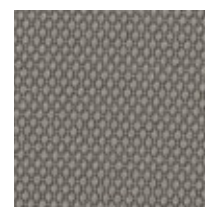
FLG61163



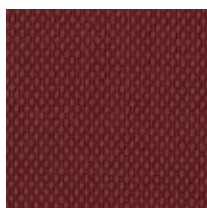
FLG62080



FLG60105



FLG60106



FLG64191



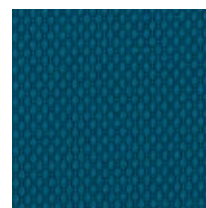
FLG61165



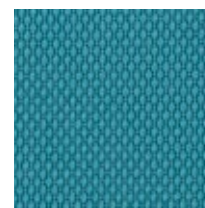
FLG61164



FLG68179



FLG67083



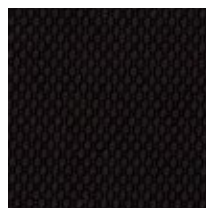
FLG67079



FLG66161



FLG60107

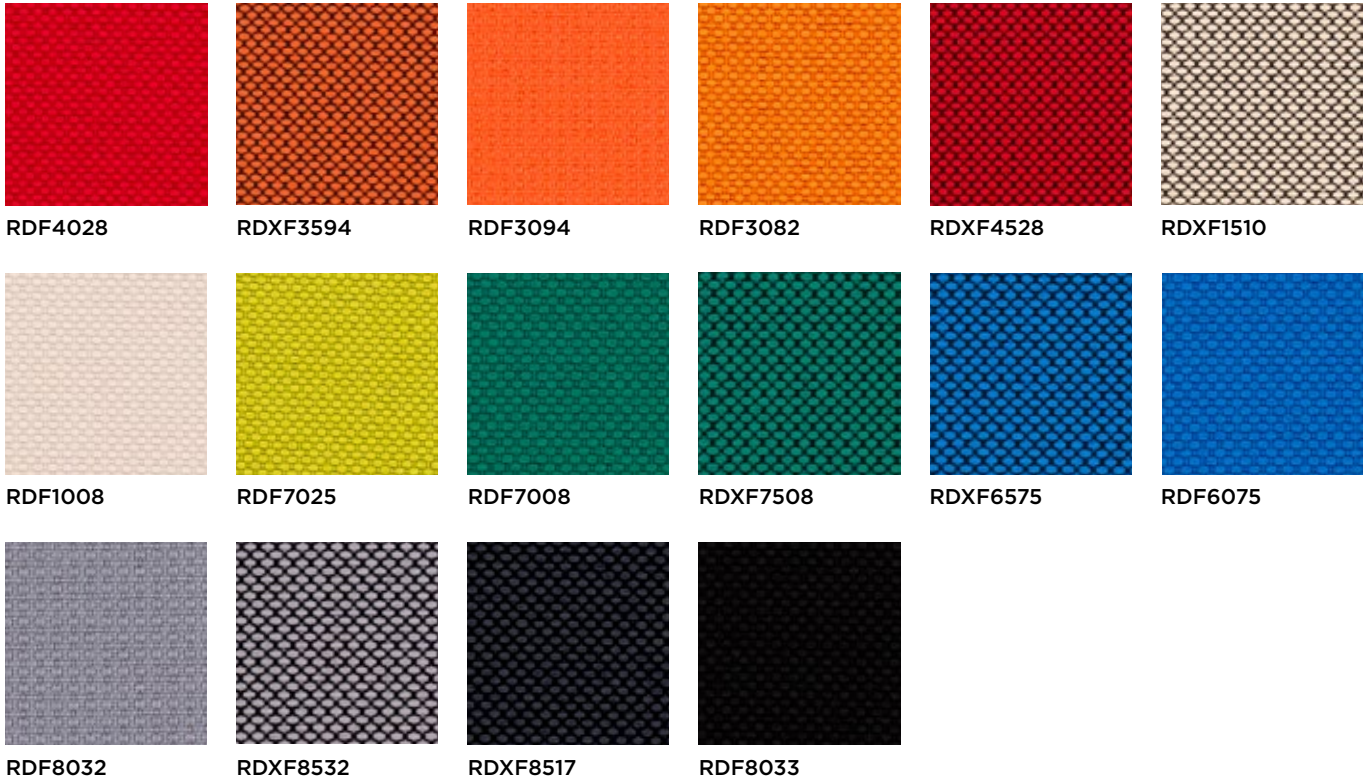


FLG60999

Price group: Grupa cenowa: Preisgruppe: Groupe de prix :	2	Weight: Gramatura: Gewicht: Poids :	307 g/m ²
Composition: Skład: Material: Composition :	100%	post-consumer recycled polyester poliester pochodzący z recyklingu recycltes Post-Consumer-Polyester polyester recyclé de récupération	
Abrasion resistance: Odporność na ścieranie: Scheuerfestigkeit: Résistance à l'abrasion :	90 000	Martindale cycles cykli Martindale Touren Martindale cycles Martindales	
Colour fastness to light: Odporność barwy na światło: Lichtechtheit: Résistance de la couleur à la lumière :	EN ISO 105-B02 (min. 5-7)		
Colour fastness to rubbing: Odporność barwy na tarcie: Reibechtheit: Résistance de la couleur au frottement :	EN ISO 105-X12 (wet: 4-5 / dry: 4-5)	Pilling: Odporność na pilling: Pilling: Résistance au boulochage :	EN ISO 12945-2 (5)
Flammability: Trudnozapalność: Brandschutznormen: Résistance au feu :	EN 1021-1, EN 1021-2 Calif. Bull. 117E	Other: Inne: Sonstiges: Autres :	EU Ecolabel certificate Cradle to Cradle certificate Oeko-Tex Standard 100 certificate

Note! Colour patterns illustrated here may differ from the originals. Nowy Styl Group reserves the right to change the constructional features and finishes of products. Information about finishes applicable to each product can be found in Nowy Styl Group's pricelists. | Die tatsächlichen Farben können von den, im Katalog abgebildeten Farben abweichen. Weitere Informationen zu den Oberflächen / Stoffen finden Sie in den Preislisten. Nowy Styl Group behält sich das Recht vor, Designänderungen und Änderungen in den Stoffen und Oberflächen vorzunehmen. | Les coloris réels peuvent légèrement différer des coloris présentés dans ce nuancier. Pour plus d'informations sur les finitions disponibles pour chaque produit, se reporter aux Tarifs Publics. Nowy Styl Group se réserve le droit de modifier les finitions de ses produits.

2 Radio | RD(X)F



Price group: Grupa cenowa: Preisgruppe: Groupe de prix :	2	Weight: Gramatura: Gewicht: Poids :	400 g/m ²
Composition: Skład: Material: Composition :	100%	polyester FR poliester FR Polyester FR polyester FR	
Abrasion resistance: Odporność na ścieranie: Scheuerfestigkeit: Résistance à l'abrasion :	80 000	Martindale cycles cykli Martindale Touren Martindale cycles Martindales	
Colour fastness to light: Odporność barwy na światło: Lichtechtheit: Résistance de la couleur à la lumière :	EN ISO 105-B02 (6)	Colour fastness to rubbing: Odporność barwy na tarcie: Reibechtheit: Résistance de la couleur au frottement :	EN ISO 105-X12 (wet: 4-5 / dry: 4-5)
Flammability: Trudnozapalność: Brandschutznormen: Résistance au feu :	EN 1021-1, EN 1021-2, BS 5852 Crib 5 BS 7176 medium hazard DIN 4102 B1, NF D 60-013 AM 18, NF P 92-501-7 M1 Önorm A 3800-1 Class B1-Q1-TR1 Önorm B 3825, Calif. Bull. 117E		
Other: Inne: Sonstiges: Autres :	Oeko-Tex Standard 100 certificate		

Note! Colour patterns illustrated here may differ from the originals. Nowy Styl Group reserves the right to change the constructional features and finishes of products. Information about finishes applicable to each product can be found in Nowy Styl Group's pricelists. | Die tatsächlichen Farben können von den, im Katalog abgebildeten Farben abweichen. Weitere Informationen zu den Oberflächen / Stoffen finden Sie in den Preislisten. Nowy Styl Group behält sich das Recht vor, Designänderungen und Änderungen in den Stoffen und Oberflächen vorzunehmen. | Les coloris réels peuvent légèrement différer des coloris présentés dans ce nuancier. Pour plus d'informations sur les finitions disponibles pour chaque produit, se reporter aux Tarifs Publics. Nowy Styl Group se réserve le droit de modifier les finitions de ses produits.

2 Xtreme | XR



Cigarette & Match



High flame resistance



Environmentally friendly



Recycled origin



High abrasion resistance



Confirmed safety



XR136



XR079



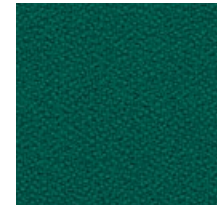
XR076



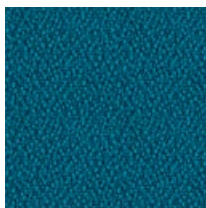
XR072



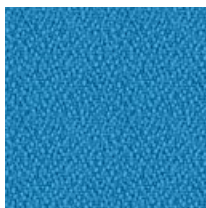
XR108



XR161



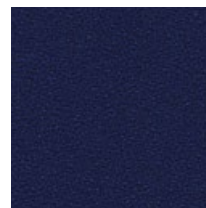
XR160



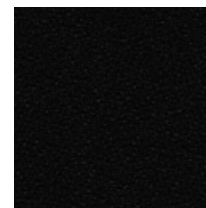
XR073



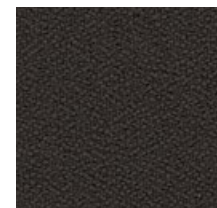
XR005



XR026



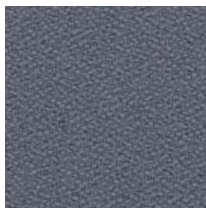
XR009



XR046



XR081



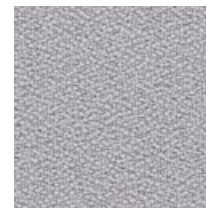
XR171



XR095



XR102



XR094

Price group: Grupa cenowa: Preisgruppe: Groupe de prix :	2	Weight: Gramatura: Gewicht: Poids :	310 g/m ²
Composition: Skład: Material: Composition :	100%	recycled flame retardant polyester, non metallic dyestuffs trudnopalny poliester pochodzący z recyklingu, nie zawiera pigmentów metalicznych recycltes, schwerentflammbares Polyester, nicht schwermetallhaltige Farbstoffe polyester recyclé ignifuge, teintures non métalliques	
Abrasion resistance: Odporność na ścieranie: Scheuerfestigkeit: Résistance à l'abrasion :	≥100 000	Martindale cycles cykli Martindale Touren Martindale cycles Martindales	Colour fastness to light: Odporność barwy na światło: Lichtechtheit: Résistance de la couleur à la lumière :
Colour fastness to rubbing: Odporność barwy na tarcie: Reibechtheit: Résistance de la couleur au frottement :	EN ISO 105-X12 (wet: 4 / dry: 4)		Pilling: Odporność na pilling: Pilling: Résistance au boulochage :
Flammability: Trudnozapalność: Brandschutznormen: Résistance au feu :	EN 1021-1, EN 1021-2 BS 5852 Crib 5 BS 7176 medium hazard BS 476 Class 1 DIN 4102 B1	Other: Inne: Sonstiges: Autres :	EU Ecolabel certificate Oeko-Tex Standard 100 certificate

Note! Colour patterns illustrated here may differ from the originals. Nowy Styl Group reserves the right to change the constructional features and finishes of products. Information about finishes applicable to each product can be found in Nowy Styl Group's pricelists. | Die tatsächlichen Farben können von den, im Katalog abgebildeten Farben abweichen. Weitere Informationen zu den Oberflächen / Stoffen finden Sie in den Preislisten. Nowy Styl Group behält sich das Recht vor, Designänderungen und Änderungen in den Stoffen und Oberflächen vorzunehmen. | Les coloris réels peuvent légèrement différer des coloris présentés dans ce nuancier. Pour plus d'informations sur les finitions disponibles pour chaque produit, se reporter aux Tarifs Publics. Nowy Styl Group se réserve le droit de modifier les finitions de ses produits.

3

Step | STG

Step Melange | STMG



Cigarette & Match



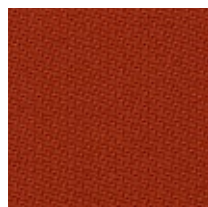
High flame resistance



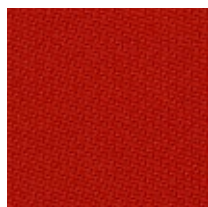
Environmentally friendly



Confirmed safety



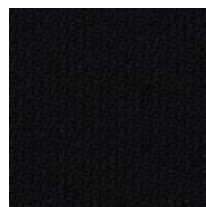
STG63075



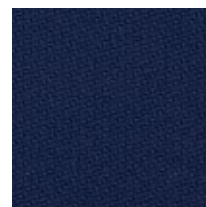
STG63012



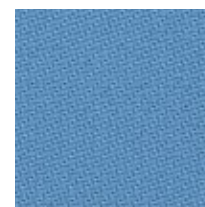
STG62057



STG60999



STG65011



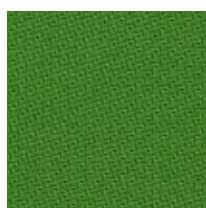
STG66018



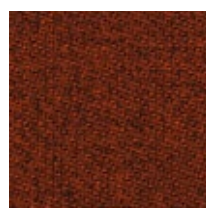
STG67004



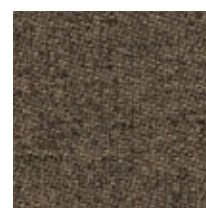
STG68119



STG68120



STMG63075



STMG61103



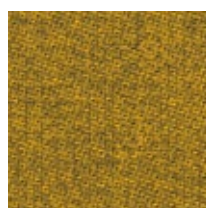
STMG61104



STMG60004



STMG67004



STMG62057

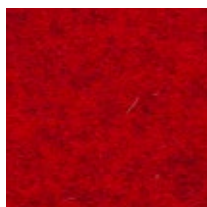


STMG68119

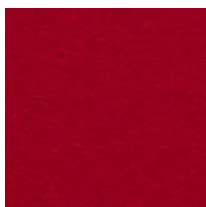
Price group: Grupa cenowa: Preisgruppe: Groupe de prix :	3	Weight: Gramatura: Gewicht: Poids :	335 g/m ²
Composition: Skład: Material: Composition :	100%	Trevira CS	
Abrasion resistance: Odporność na ścieranie: Scheuerfestigkeit: Résistance à l'abrasion :	100 000	Martindale cycles cykli Martindale Touren Martindale cycles Martindales	Colour fastness to light: Odporność barwy na światło: Lichtechtheit: Résistance de la couleur à la lumière :
Colour fastness to rubbing: Odporność barwy na tarcie: Reibechtheit: Résistance de la couleur au frottement:	EN ISO 105-X12 (wet: 4-5 / dry: 4-5)		Pilling: Odporność na pilling: Pilling: Résistance au boulochage :
Flammability: Trudnozapalność: Brandschutznormen: Résistance au feu :	EN 1021-1, EN 1021-2, BS 5852 Crib 5, BS 7176 medium hazard, DIN 4102 B1, NF P 92-503-5 M1, NF D 60-013 AM 18, Calif. Bull. 117E	Other: Inne: Sonstiges: Autres :	EU Ecolabel certificate Oeko-Tex Standard 100 certificate

Note! Colour patterns illustrated here may differ from the originals. Nowy Styl Group reserves the right to change the constructional features and finishes of products. Information about finishes applicable to each product can be found in Nowy Styl Group's pricelists. | Die tatsächlichen Farben können von den, im Katalog abgebildeten Farben abweichen. Weitere Informationen zu den Oberflächen / Stoffen finden Sie in den Preislisten. Nowy Styl Group behält sich das Recht vor, Designänderungen und Änderungen in den Stoffen und Oberflächen vorzunehmen. | Les coloris réels peuvent légèrement différer des coloris présentés dans ce nuancier. Pour plus d'informations sur les finitions disponibles pour chaque produit, se reporter aux Tarifs Publics. Nowy Styl Group se réserve le droit de modifier les finitions de ses produits.

4

Blazer | CUZCigarette
& MatchNatural
origin

CUZ63



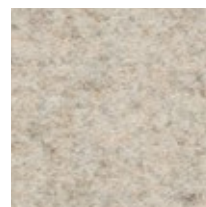
CUZ13



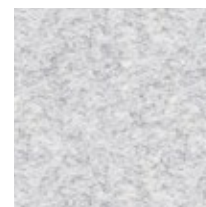
CUZ82



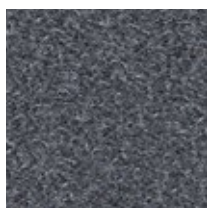
CUZ2W



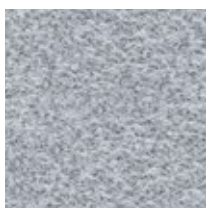
CUZ2Q



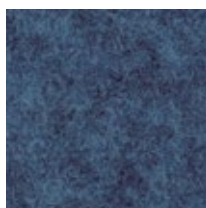
CUZ28



CUZ30



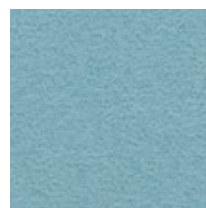
CUZ1E



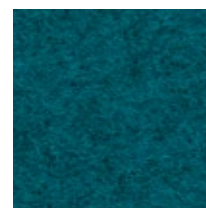
CUZ1W



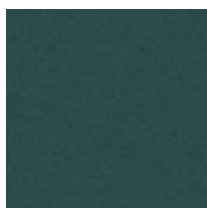
CUZ1R



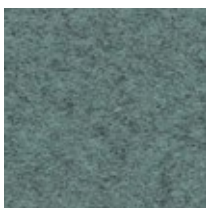
CUZ2Z



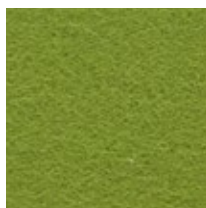
CUZ3B



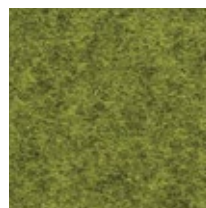
CUZ1P



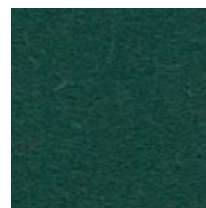
CUZ33



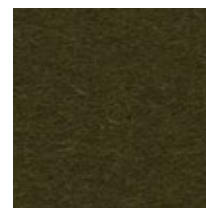
CUZ53



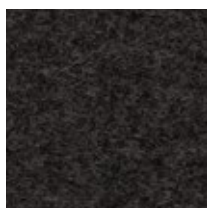
CUZ1K



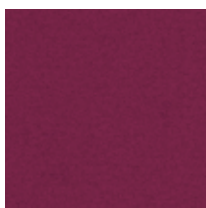
CUZ1N



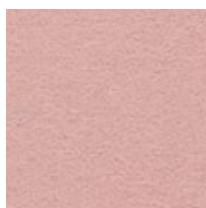
CUZ1M



CUZ67



CUZ21



CUZ2R

Price group: Grupa cenowa: Preisgruppe: Groupe de prix :	4	Composition: Skład: Material: Composition :	100% virgin wool, non metallic dyestuffs czysta wełna, nie zawiera pigmentów metalicznych Schurwolle, nicht schwermetallhaltige Farbstoffe pure laine vierge, teintures non métalliques
Weight: Gramatura: Gewicht: Poids :	460 g/m ²	Abrasion resistance: Odporność na ścieranie: Scheuerfestigkeit: Résistance à l'abrasion :	≥50 000 Martindale cycles cykli Martindale Touren Martindale cycles Martindales
Colour fastness to light: Odporność barwy na światło: Lichtechtheit: Résistance de la couleur à la lumière :	EN ISO 105-B02 (5)	Colour fastness to rubbing: Odporność barwy na tarcie: Reibechtheit: Résistance de la couleur au frottement:	EN ISO 105-X12 (wet: 4 / dry: 4)
Flammability: Trudnozapalność: Brandschutznormen: Résistance au feu :	EN 1021-1, EN 1021-2, BS 7176 low hazard, BS 476 Class 1, NF D 60-013		

4

Synergy | LDS



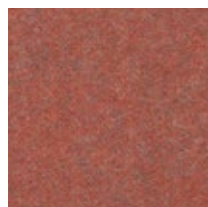
Cigarette & Match



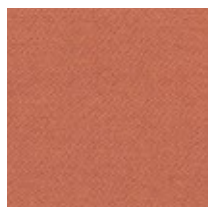
High abrasion resistance



Environmentally friendly



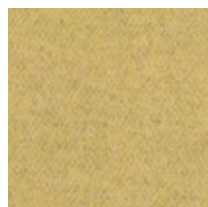
LDS73



LDS75



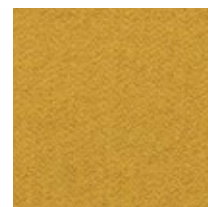
LDS74



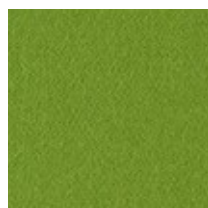
LDS45



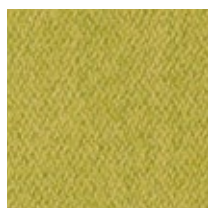
LDS44



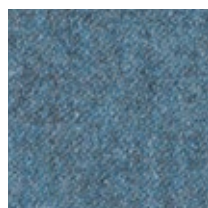
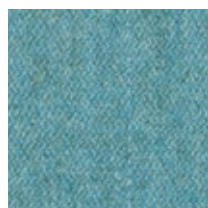
LDS28



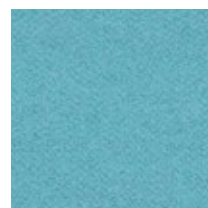
LDS47



LDS46


 LDS14¹


LDS06

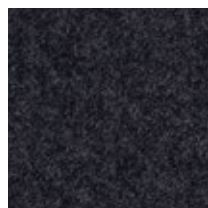
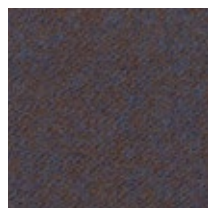


LDS55

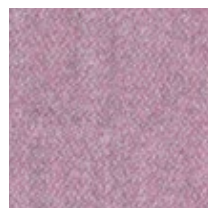


LDS56


 LDS03¹

 LDS11¹

 LDS17¹


LDS38


 LDS07¹


LDS08

Price group: Grupa cenowa: Preisgruppe: Groupe de prix :	4	Weight: Gramatura: Gewicht: Poids :	400 g/m ²
Composition: Skład: Material: Composition :	95%	virgin wool czysta wełna Schurwolle pure laine vierge	5% polyamide poliamid Polyamid polyamide
Abrasion resistance: Odporność na ścieranie: Scheuerfestigkeit: Résistance à l'abrasion :	≥100 000	Martindale cycles cykli Martindale Touren Martindale cycles Martindales	
Colour fastness to light: Odporność barwy na światło: Lichtechtheit: Résistance de la couleur à la lumière :	EN ISO 105-B02 (5)	Colour fastness to rubbing: Odporność barwy na tarcie: Reibechtheit: Résistance de la couleur au frottement:	EN ISO 105-X12 (wet: 4 / dry: 4)
Pilling: Odporność na pilling: Pilling: Résistance au boulochage :	EN ISO 12945-2 (4)	Other: Inne: Sonstiges: Autres :	EU Ecolabel certificate
Flammability: Trudnozupalność: Brandschutznormen: Résistance au feu :	EN 1021-1, EN 1021-2, BS 7176 low hazard, NF D 60-013, Önorm A 3800-1 Q1, Önorm B 3825		

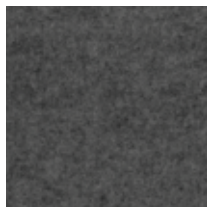
EN ¹ colour from Landscape Synergy collection

PL ¹ kolor należy do kolekcji Landscape Synergy

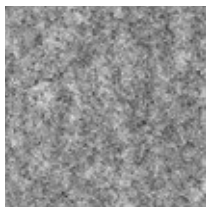
DE ¹ Farben der Landscape Synergy Collection

FR ¹ le coloris fait partie de la collection Landscape Synergy

Felt



FC01



FC02

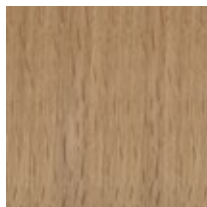
Composition: Skład: Material: Composition :	100%	polyester fiber włókno poliestrowe Polyesterfasern fibre de polyester
Weight: Gramatura: Gewicht: Poids :	1000 g/m ²	for thickness 7.5 mm dla grubości 7,5 mm bei einer Stärke von 7,5 mm pour une épaisseur de 7,5 mm
Flammability: Trudnozapalność: Brandschutznormen: Résistance au feu :	EN 1021-1, EN 1021-2	

Cigarette
& MatchRecycled
origin

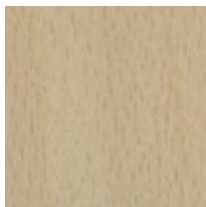
Composition: Skład: Material: Composition :	100%	polyester fiber włókno poliestrowe Polyesterfasern fibre de polyester
Weight: Gramatura: Gewicht: Poids :	650 g/m ²	for thickness 7.5 mm dla grubości 7,5 mm bei einer Stärke von 7,5 mm pour une épaisseur de 7,5 mm

Wood

for chairs and furniture



2.D07 (OA) Oak



1.007 (OC) Beech

2.D07 (OA)

- EN** clear varnish for chairs and furniture (beech plywood with oak veneer / solid oak wood)
PL lakier bezbarwny do krzeseł i mebli (sklejka bukowa z okleiną dębową / lite drewno dębowe)
DE Klarlack für Stühle und Möbel (Buchensperrholz beschichtet mit Eichenfurnier / Echtholz Oak)
FR vernis transparent pour sièges et mobilier (hêtre multiplis plaqué bois de chêne / bois massif de chêne)

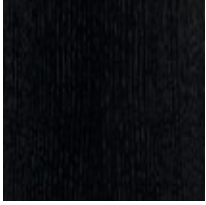
1.007 (OC)

- EN** clear varnish for chairs and furniture (beech plywood / solid beech wood)
PL lakier bezbarwny do krzeseł i mebli (sklejka bukowa / lite drewno bukowe)
DE Klarlack für Stühle und Möbel (Schichtholz Beech / Echtholz Beech)
FR vernis transparent pour sièges et mobilier (hêtre multiplis / bois massif de hêtre)

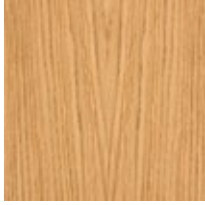
Note! Colour patterns illustrated here may differ from the originals. Nowy Styl Group reserves the right to change the constructional features and finishes of products. Information about finishes applicable to each product can be found in Nowy Styl Group's pricelists. | Die tatsächlichen Farben können von den, im Katalog abgebildeten Farben abweichen. Weitere Informationen zu den Oberflächen / Stoffen finden Sie in den Preislisten. Nowy Styl Group behält sich das Recht vor, Designänderungen und Änderungen in den Stoffen und Oberflächen vorzunehmen. | Les coloris réels peuvent légèrement différer des coloris présentés dans ce nuancier. Pour plus d'informations sur les finitions disponibles pour chaque produit, se reporter aux Tarifs Publics. Nowy Styl Group se réserve le droit de modifier les finitions de ses produits.

Veneer

for furniture



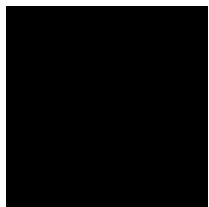
VO Black Oak



DM Natural Oak

Melamine

available thickness: 12, 18, 19, 25 mm



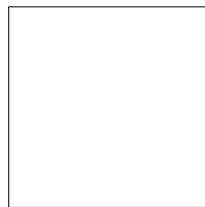
CC Black



MS Slate



MP Platinum



BI White



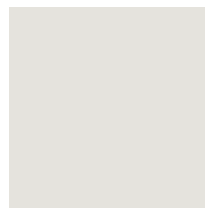
NM Diamond Grey



BZ Grey Basalt



NK Cashmere



MB White Grey



NR Denim Blue



NS Fjord Green



NU Blood Orange



NF Saffron

EN melamine faced chipboard (MFC), class E1

PL płyta meblowa dwustronnie melaminowana, klasa E1

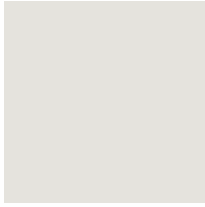
DE Beidseitig melaminbeschichtete Spanplatte der Güteklasse E1

FR panneau de particules mélaminé double face, de la classe E1

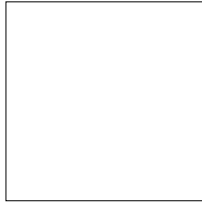
Laser edge ABS



MP Platinum



MB White Grey



BI White

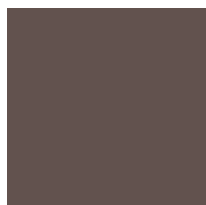
Linoleum for table tops



JC Charcoal



JB Burgundy



JM Mauve



JP Pebble



JS Smokey Blue

EN linoleum made from natural raw materials: linseed oil, resin, wood flour and natural dyes

PL linoleum wyprodukowane z surowców naturalnych: oleju lnianego, żywicy, mączki drzewnej i naturalnych barwników

DE Linoleum wird aus nachwachsenden Rohstoffen gefertigt: Leinöl, Harz, Holzmehl sowie natürliche Farbpigmente

FR linoléum fabriqué à partir de matières premières naturelles : huile de lin, résine, farine de bois et pigments naturels

Metal



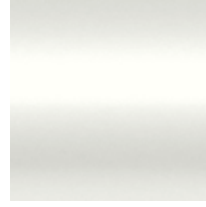
RAL 9005
Black
CZ, BL/BLT, Y



RAL 7024
Diamond Grey
NM



RAL 2001
Blood Orange
NU



RAL 9016
White
BI, WT/WTT, W



RAL 9010
White
BI, WH, W