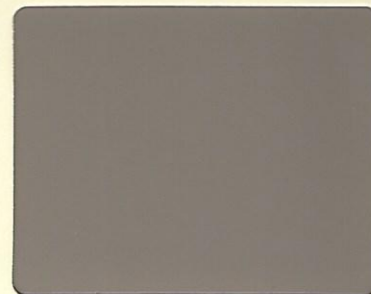




Biały
Weiss
White



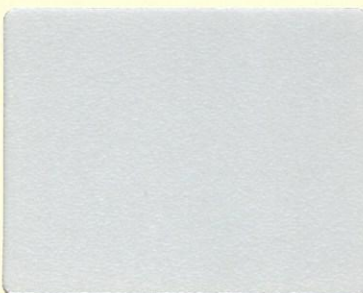
Czarny
Schwarz
Black



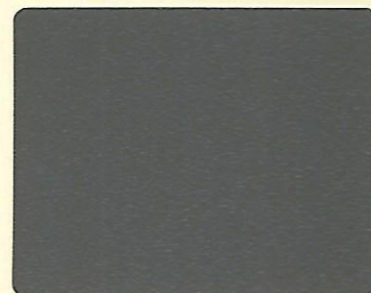
Beżowy
Beige
Beige



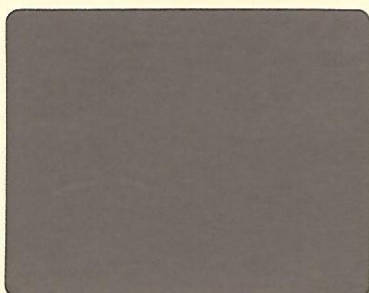
Biały
Weiss
White



Szary
Lichtgrau
Grey



Antracyt
Anthrazit
Anthracite



Lava
Lava
Lava



Dąb Bielony
Eiche Geweiss
Whitened Oak



Heban Makasar
Makassar Ebenholz
Makassar Ebony



Jesion Czarny
Esche Schwarz
Black Ash






Dąb Klasyczny
Eiche Classic
Classic Oak



Dąb Mocca
Eiche Mocca
Mocca Oak

- KOLORY PŁYT
- DEKORE
- BOARD COLORS

MELAMINA	Avion	Brand	Profil	Evo	Pulsar	Lino Bis	ML-50	Binar	System PRO	Rea	Trito	Szafy	Szafy ECO	Systema	Kontenery	Stoly Konferenc.
Buk			●	●	●	●	●		●	●	●	●	●	●	●	●
Buk Bawaria			●	●	●	●	●		●	●	●	●		●	●	●
Grusza			●	●	●	●	●		●	●	●	●		●	●	●
Brzoza			●	●	●	●	●		●	●	●	●		●	●	●
Dąb Jasny		●	●	●	●	●	●	●	●	●	●	●		●	●	●
Dąb Dziki	●	●	●	●	●	●	●	●	●	●	●	●		●	●	●
Dąb Sonoma	●	●	●	●	●	●	●	●	●	●	●	●		●	●	●
Dąb Afrykański	●	●	●	●	●	●	●	●	●	●	●	●		●	●	●
Dąb Ciemny	●	●	●	●	●	●	●	●	●	●	●	●		●	●	●
Wiąz Baron	●	●	●	●	●	●	●	●	●	●	●	●		●	●	●
Orzech		●	●	●	●	●	●		●	●	●	●	●	●	●	●
Wenge		●	●	●	●	●	●	●	●	●	●	●		●	●	●
Czekolada	●	●	●	●	●	●	●	●	●		●	●		●	●	●
Biały	●	●	●	●	●	●	●		●	●	●	●	●	●	●	●
Szary			●	●	●	●	●		●	●	●	●	●	●	●	●
Antracyt	●	●	●	●	●	●	●	●	●	●	●	●	●	●	●	●
Lava	●	●	●	●	●	●	●	●	●	●	●	●		●	●	●
Biały 	●															
Beżowy 	●															
Czarny 	●															

OKLEINA NATURALNA	Avion	Brand	Profil	Evo	Pulsar	Lino Bis	ML-50	Binar	System PRO	Rea	Trito	Szafy	Szafy ECO	Systema	Kontenery	Stoly Konferenc.
Dąb Bielony		●														
Dąb Klasyczny	●															
Dąb Mocca	●															
Heban Makasar		●														
Jesion Czarny	●															

ELEMENTY METALOWE	Avion	Brand	Profil	Evo	Pulsar	Lino Bis	ML-50	Binar	System PRO	Rea	Trito	Szafy	Szafy ECO	Systema	Kontenery	Stoly Konferenc.
Aluminium			●	●	●	●	●		●			●		●	●	●
Grafit				●	●	●	●	●	●			●		●	●	●
Biały	●	●	●	●	●				●			●				
Antracyt	●	●	●		●				●			●				
Nevada	●	●	●	●	●			●	●			●		●	●	



- powierzchnia odporna na ślady rąk

mebelux[®]

MEBELUX sp. z o.o.
 14-100 Ostróda, ul. Przemysłowa 9, Poland
 tel./fax (+48 89) 646 12 22, 646 12 11
 E-mail: mebelux@mebelux.com.pl
 www.mebelux.com.pl



Buk
Buche
Beech



Buk Bawaria
Bavaria Buche
Bavaria Beech



Grusza
Birne
Pear



Brzoza
Birke
Birch



Dąb Jasny
Eiche Hell
Light Oak



Dąb Dziki
Eiche Wild
Wild Oak



Dąb Sonoma
Eiche Sonoma
Sonoma Oak



Dąb Afrykański
Afrikanische Eiche
African Oak



Dąb Ciemny
Eiche Dunkel
Dark Oak



Wenge
Wenge
Wenge



Orzech
Nuss
Nut



Wiąz Baron
Ulme Baron
Baron Elm



Czekolada
Schokolade
Chocolate

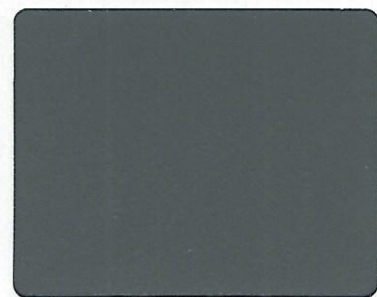
- KOLORY PŁYT
- DEKORE
- BOARD COLORS



Aluminium
Aluminium
Aluminium



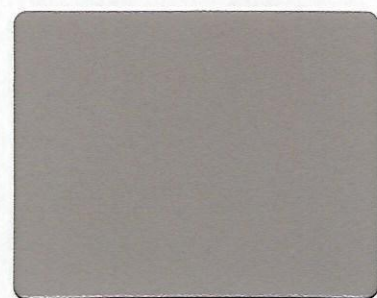
Grafit
Graphit
Graphite



Antracyt
Anthrazit
Anthracite






Biały
Weiß
White



Nevada
Nevada
Nevada

- KOLORY ELEMENTÓW METALOWYCH
- FARBEN VON METALLELEMENTEN
- COLORS OF METAL ELEMENTS

MELAMINA	Avion	Brand	Profil	Evo	Pulsar	Lino Bis	ML-50	Binar	System PRO	Rea	Trito	Szafy	Szafy ECO	Systema	Kontenery	Stoly Konferenc.
Buk			●	●	●	●	●		●	●	●	●	●	●	●	●
Buk Bawaria			●	●	●	●	●		●	●	●	●		●	●	●
Grusza			●	●	●	●	●		●	●	●	●		●	●	●
Brzoza			●	●	●	●	●		●	●	●	●		●	●	●
Dąb Jasny		●	●	●	●	●	●	●	●	●	●	●		●	●	●
Dąb Dziki	●	●	●	●	●	●	●	●	●	●	●	●		●	●	●
Dąb Sonoma	●	●	●	●	●	●	●	●	●	●	●	●		●	●	●
Dąb Afrykański	●	●	●	●	●	●	●	●	●	●	●	●		●	●	●
Dąb Ciemny	●	●	●	●	●	●	●	●	●	●	●	●		●	●	●
Wiąz Baron	●	●	●	●	●	●	●	●	●	●	●	●		●	●	●
Orzech		●	●	●	●	●	●		●	●	●	●	●	●	●	●
Wenge		●	●	●	●	●	●	●	●	●	●	●		●	●	●
Czekolada	●	●	●	●	●	●	●	●	●	●	●	●		●	●	●
Biały	●	●	●	●	●	●	●		●	●	●	●	●	●	●	●
Szary			●	●	●	●	●		●	●	●	●	●	●	●	●
Antracyt	●	●	●	●	●	●	●	●	●	●	●	●	●	●	●	●
Lava	●	●	●	●	●	●	●	●	●	●	●	●		●	●	●
Biały 	●															
Beżowy 	●															
Czarny 	●															

OKLEINA NATURALNA	Avion	Brand	Profil	Evo	Pulsar	Lino Bis	ML-50	Binar	System PRO	Rea	Trito	Szafy	Szafy ECO	Systema	Kontenery	Stoly Konferenc.
Dąb Bielony		●														
Dąb Klasyczny	●															
Dąb Mocca	●															
Heban Makasar		●														
Jesion Czarny	●															

ELEMENTY METALOWE	Avion	Brand	Profil	Evo	Pulsar	Lino Bis	ML-50	Binar	System PRO	Rea	Trito	Szafy	Szafy ECO	Systema	Kontenery	Stoly Konferenc.
Aluminium			●	●	●	●	●		●			●		●	●	●
Grafit				●	●	●	●	●	●			●		●	●	●
Biały	●	●	●	●	●				●			●				
Antracyt	●	●	●		●				●			●				
Nevada	●	●	●	●	●			●	●			●		●	●	

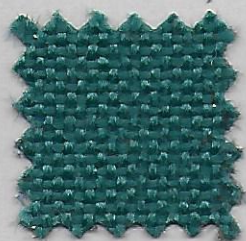


- powierzchnia odporna na ślady rąk

mebelux®

MEBELUX sp. z o.o.
 14-100 Ostróda, ul. Przemysłowa 9, Poland
 tel./fax (+48 89) 646 12 22, 646 12 11
 E-mail: mebelux@mebelux.com.pl
 www.mebelux.com.pl

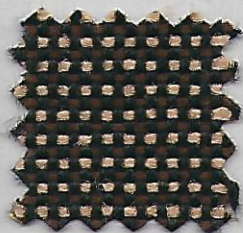
I grupa cenowa - OPAL



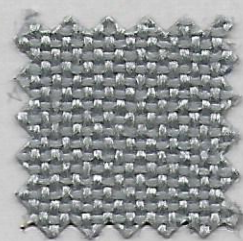
L-09



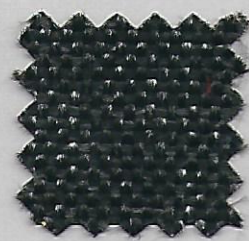
L-06



L-041K

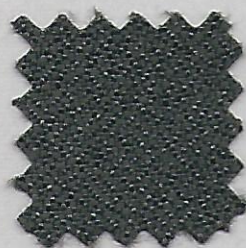


L-03



L-02

II grupa cenowa - ELF, NEXT



ELF E1



ELF E2



ELF E3



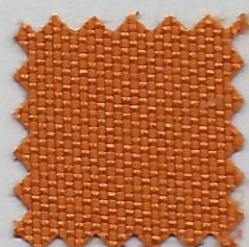
ELF E4



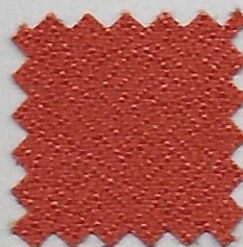
NEXT NX-7



ELF E5



NEXT NX-3



ELF E6



ELF E7



NEXT NX-9

III grupa cenowa - FILC BLAZER



CUZ31



CUZ1K



CUZ26



CUZ28



CUZ63