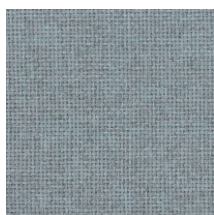


# Standardowa kolorystyka ekranów akustycznych

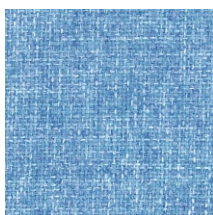
## Cara I grupa cenowa



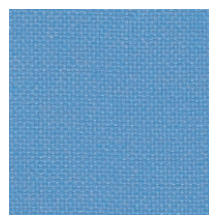
Hillswick EJ190



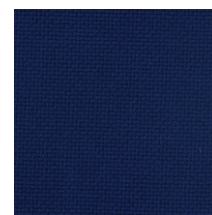
Merrick EJ048



Dolphin EJ105



Inverness EJ175



Walten EJ011



Staffa EJ185



Maree EJ195



Pitlochry EJ076

## Blazer II grupa cenowa



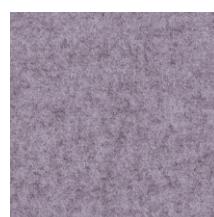
Silverdale CUZ28



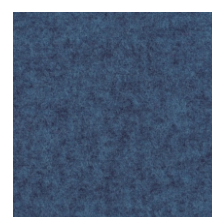
Silcoates CUZ30



Plymouth CUZ1R



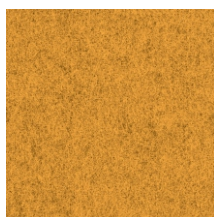
Nottingham CUZ1S



Newcastle CUZ1W



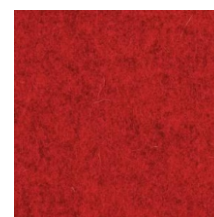
Ulster CUZ1F



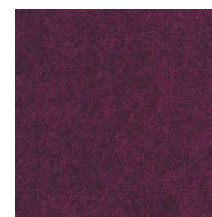
Wesley CUZ82



Aberdeen CUZ87



Handcross CUZ63



Banbridge CUZ32

Kompletne wzory tkanin Cara (I grupa cenowa), Blazer (II grupa cenowa), Blazer Quilt Channel i Hourglass (III grupa cenowa) oraz wszystkie certyfikaty i atesty dostępne są na stronie producenta [www.camira.com](http://www.camira.com)

**FURNIKO**