

# WZORNIK TKANIN

## TABELA TKANIN

Tabela tkanin zawiera informacje o dostępnych tkaninach dla kolekcji produktów Furniko, w ramach których występują elementy tapicerowane.

Cyfry rzymskie (I, II, III, IV) oznaczają grupę cenową, do jakiej przynależy dana tkanina. Symbol „n/a” oznacza, że tkanina jest niedostępna dla wybranej kolekcji Furniko.

Wszystkie elementy z kolekcji Hush Pads oraz nakładki akustyczne Hush Pads dedykowane do wybranych kolekcji, dostępne są jedynie w tkaninie Blazer i Synergy. Dla odróżnienia produktów Hush Pads od pozostałych kolekcji, grupę cenową tkanin oznaczono symbolem „B”. Nakładki akustyczne Hush Pads dedykowane są do kolekcji: Locker, E-Wall, Meble do Przechowywania, Pluris oraz Tundra.

KOLEKCJA	CARA	EVO	NEXT	SPRINT	XTREME	BLAZER	SYNERGY	SYNERGY CHANNEL
HAPPY HOUR <i>NAKŁADKI DO SIEDZENIA</i>	N/A	N/A	N/A	N/A	N/A	III	III	N/A
HUSH PADS <i>ORAZ PANELE NA ŚCIANY TYLNE KORPUSÓW</i>	N/A	N/A	N/A	N/A	N/A	B	B	N/A
LIFT <i>PANELE TAPICEROWANE</i>	I	I	I	II	II	III	III	IV
MEBLE DO PRZECHOWYWANIA <i>NAKŁADKI DO SIEDZENIA DLA KONTENRÓW</i>	I	I	I	II	II	III	III	N/A
PLURIS <i>PANELE TAPICEROWANE - WSZYSTKIE RODZAJE</i>	I	I	I	II	II	III	III	IV
PLURIS <i>NAKŁADKI DO SIEDZENIA DO ŁAWEK</i>	I	I	I	II	II	III	III	N/A
TUNDRA <i>PANELE TAPICEROWANE - WSZYSTKIE RODZAJE</i>	I	I	I	II	II	III	III	IV
TUNDRA <i>NAKŁADKI DO SIEDZENIA</i>	I	I	I	II	II	III	III	N/A
EKRANY AKUSTYCZNE WOLNOSTOJĄCE	I	I	I	II	II	III	III	IV
SILENT CUBE <i>ŚCIANY TAPICEROWANE ORAZ SOFY</i>	N/A	N/A	N/A	N/A	N/A	III	III	N/A
E-WALL <i>PANELE HUSH PADS</i>	N/A	N/A	N/A	N/A	N/A	B	B	N/A
P-SQUARE P-ROUND <i>PANELE TAPICEROWANE - WSZYSTKIE RODZAJE</i>	I	I	I	II	II	III	III	IV
T-SQUARE <i>PANELE TAPICEROWANE - WSZYSTKIE RODZAJE</i>	I	I	I	II	II	III	III	IV

# I GRUPA CENOWA

## Cara

### Skład

100% polipropylen

### Waga

220 g/m<sup>2</sup> ± 5%

### Certyfikaty środowiskowe

EU Ecolabel

### Szerokość rolki

170 cm

### Odporność na światło

6 (EN ISO 105-B02):2014

### Certyfikaty trudnopalności

EN 1021-1

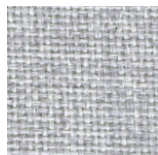
EN 476 Part 7 Class 1

EN 13501-1 B, s2, d0

### Czyszczenie

Regularne odkurzanie.

Wycieranie wilgotną ściereczką.



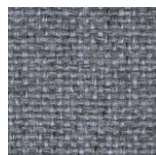
Ej004 Glass



Ej192 Lomond



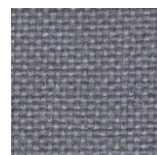
Ej191 Shetland



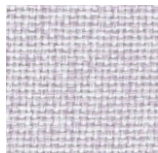
Ej190 Hillswick



Ej193 Beltane



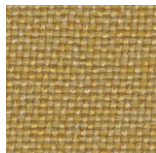
Ej172 Chaucer



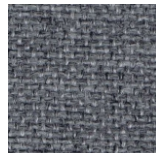
Ej169 Clan



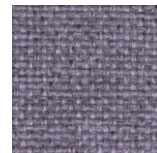
Ej173 Austen



Ej195 Maree



Ej016 Portland



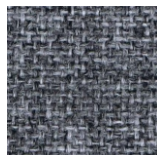
Ej196 Denny



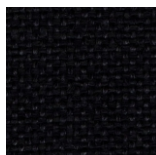
E194 Lerwick



Ej048 Merrick



Ej104 Lead



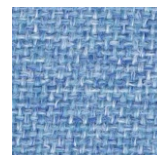
Ej138 Black



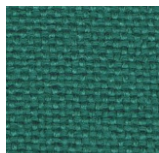
Ej033 Spray



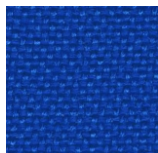
Ej189 Ronay



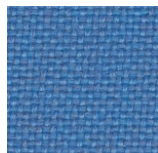
Ej105 Dolphin



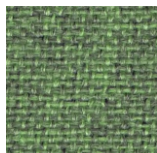
Ej015 Carron



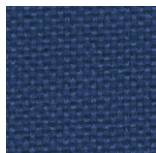
Ej125 Galilee



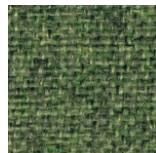
Ej175 Inverness



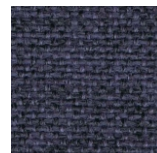
Ej186 Fair Isle



Ej154 Adriatic



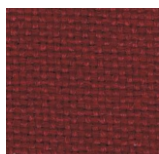
Ej185 Staffa



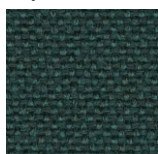
Ej188 Easdale



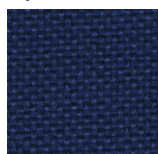
Ej197 Lossie



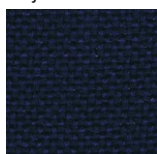
Ej038 Tummel



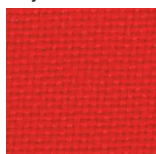
Ej187 Lora



Ej180 Cluanie



Ej011 Walten



Ej076 Pitlochry

## Evo

### Skład

100% poliester

### Waga

300 g/m<sup>2</sup>

### Odporność na ścieranie

150 000 (cykle Martindale'a - EN ISO 12947-2)

### Odporność na światło

5 (EN ISO 105-B02):2014

### Certyfikaty trudnopalności

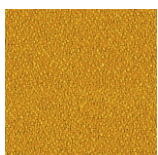
EN 1021-1

EN 1021-2

### Czyszczenie

Regularne odkurzanie.

Wycieranie wilgotną ściereczką.



EV-18



EV-19



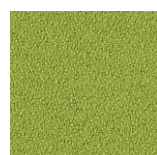
EV-4



EV-5



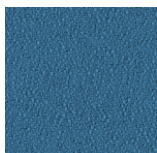
EV-2



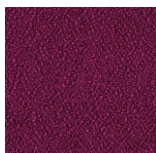
EV-20



EV-24



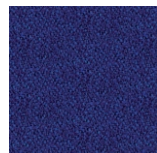
EV-23



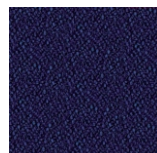
EV-21



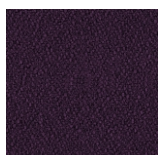
EV-25



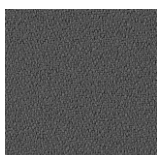
EV-9



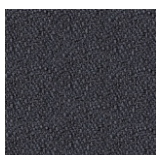
EV-10



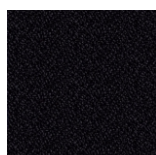
EV-22



EV-14



EV-1



EV-11

## Next

### Skład

100% poliester

### Waga

380 g/m<sup>2</sup>

### Odporność na ścieranie

100 000 (cykle Martindale'a - EN

ISO 12947-2)

### Odporność na światło

5 (EN ISO 105-B02):2014

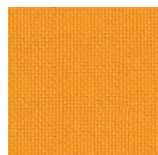
### Certyfikaty trudnopalności

EN 1021-1

### Czyszczenie

Regularne odkurzanie.

Wycieranie wilgotną ściereczką.



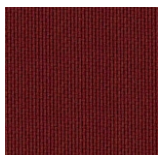
NX-1



NX-3



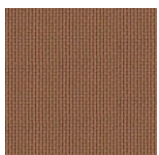
NX-5



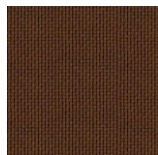
NX-7



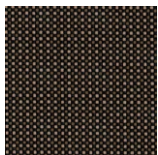
NX-2



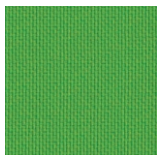
NX-6



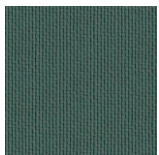
NX-8



NX-4



NX-9



NX-11



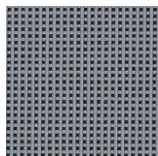
NX-13



NX-15



NX-10



NX-12



NX-14



NX-16

## II GRUPA CENOWA

## Sprint

### Skład

100% poliester

### Waga

325 g/m<sup>2</sup>

### Odporność na ścieranie

100 000 (cykle Martindale'a - EN

ISO 12947-2)

### Szerokość rolki

150 cm

### Odporność na światło

5 (EN ISO 105-B02):2014

### Certyfikaty trudnopalności

EN 1021-1

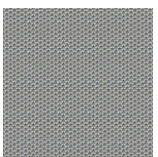
EN 1021-2

### Czyszczenie

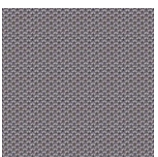
Tkanina może być prana w

temperaturze maksymalnej 60°C.

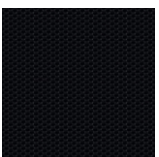
Wycieranie wilgotną ściereczką.



Ps001 Hurdle



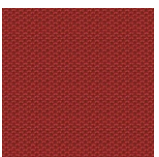
Ps002 Relay



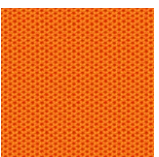
Ps004 Chase



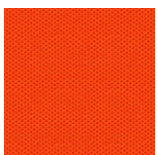
Ps010 Start



Ps011 Finish



Ps011 Gold



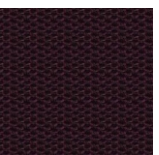
Ps016 Plunge



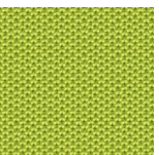
Ps017 Runner



Ps018 Ready



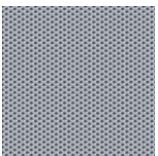
Ps020 Go



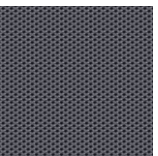
Ps026 Energy



Ps027 Train



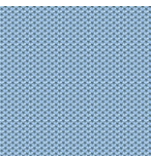
Ps028 Silver



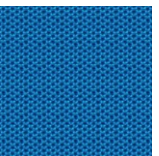
Ps029 Block



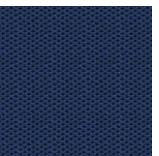
Ps030 Speed



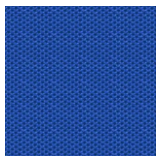
Ps031 Stretch



Ps032 Victory



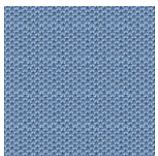
Ps033 Line



Ps037 Focus



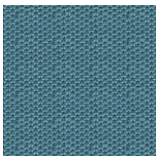
Ps038 Heat



Ps039 Nutrition



Ps040 Competitor



Ps041 Champion

## Xtreme

### Skład

100% poliester z recyklingu

### Waga

310 g/m<sup>2</sup>

### Certyfikaty środowiskowe

EU Ecolabel, wykonany w 100% z poliestru z recyklingu

### Odporność na ścieranie

100 000 (cykle Martindale'a - EN ISO 12947-2)

### Szerokość rolki

140 cm

### Odporność na światło

6 (EN ISO 105-B02):2014

### Certyfikaty trudnopalności

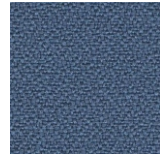
EN 1021-1

EN 1021-2

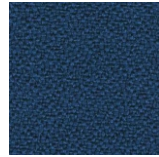
### Czyszczenie

Tkanina może być prana w temperaturze maksymalnej 60°C.

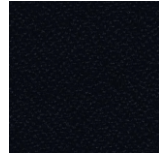
Wycieranie wilgotną ściereczką.



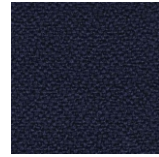
Ys004 Martinique



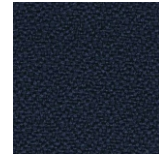
Ys005 Curacao



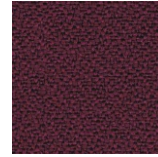
Ys009 Havana



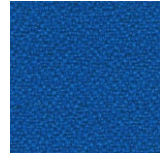
Ys024 Cayman



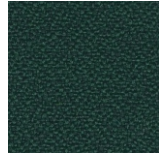
Ys026 Costa



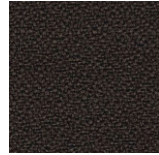
Ys030 Tobago



Ys035 Honeymoon



Ys045 Taboo



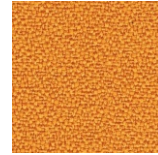
Ys046 Sombrero



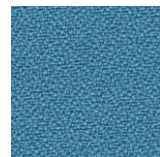
Ys047 Windjammer



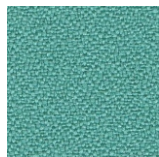
Ys071 Sandstorm



Ys072 Solano



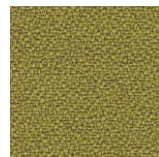
Ys073 Parasol



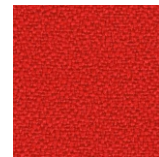
Ys074 Campeche



Ys076 Lobster



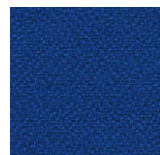
Ys077 Appledore



Ys079 Panama



Ys081 Blizzard



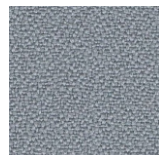
Ys082 Scuba



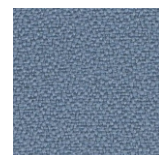
Ys084 Tarot



Ys091 Nougat



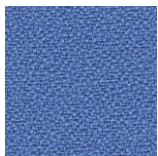
Ys094 Slip



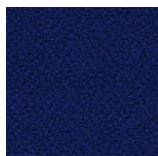
Ys095 Steel



Ys096 Apple



Ys097 Bluebell



Ys100 Ocean



Ys101 Diablo



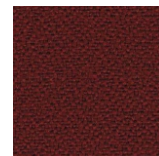
Ys102 Bridgetown



Ys105 Belize



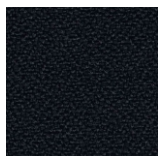
Ys108 Aruba



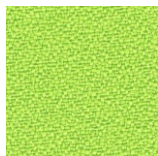
Ys136 Tokara



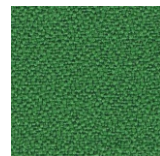
Ys141 Krabi



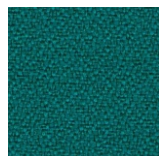
Ys145 Padang



Ys156 Madura



Ys159 Lombok



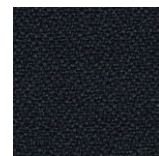
Ys160 Tonga



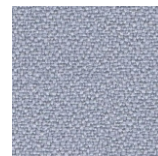
Ys168 Tortuga



Ys171 Osumi



Ys172 Bonaire



Ys173 Rum

## III GRUPA CENOWA

### Blazer

#### Skład

100% wełna

#### Waga

460 g/m<sup>2</sup>

#### Odporność na ścieranie

50 000 (cykle Martindale'a - EN

ISO 12947-2)

#### Szerokość rolki

140 cm

#### Odporność na światło

5 (EN ISO 105-B02):2014

#### Certyfikaty trudnopalności

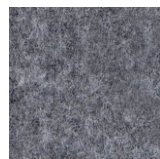
EN 1021-1

EN 1021-2

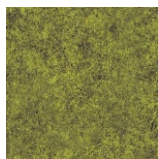
#### Czyszczenie

Regularne odkurzanie.

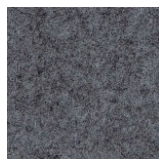
Wycieranie wilgotną ściereczką.



CUZ1E Surrey



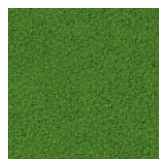
CUZ1F Ulster



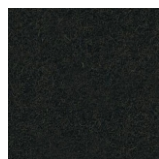
CUZ1J Aberlour



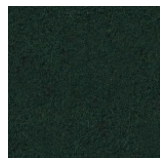
CUZ1K Camphill



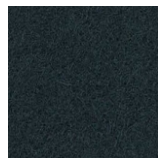
CUZ1L Newport



CUZ1M Glasgow



CUZ1N Cardiff



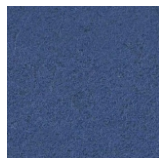
CUZ1P Hull



CUZ1R Plymouth



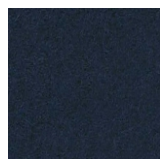
CUZ1T Sheffield



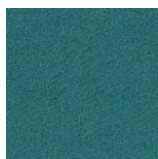
CUZ1V Manchester



CUZ1W Newcastle



CUZ1Y Edinburgh



CUZ02 Aston



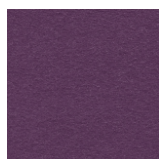
CUZ2Q Dartmouth



CUZ2R Stanford



CUZ2S Barnard



CUZ2T Holyoke



CUZ2U Vassar



CUZ2W Eynesbury



CUZ2X Penola



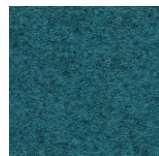
CUZ2Y Tyndale



CUZ2Z Woodcroft



CUZ3A Montcrest



CUZ3B Abertay



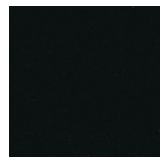
CUZ3C Marymount



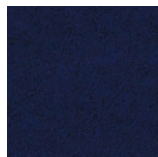
CUZ3D Barlborough



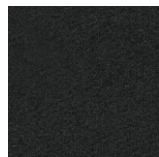
CUZ3E Scottdale



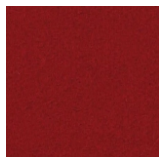
CUZ08 Napier



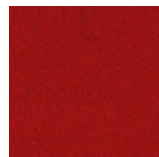
CUZ09 Oxford



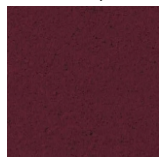
CUZ12 Winchester



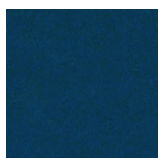
CUZ13 Wellington



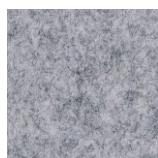
CUZ18 Oriel



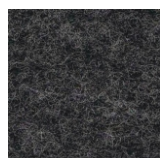
CUZ21 Magdalene



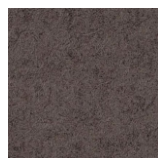
CUZ26 Knightsbridge



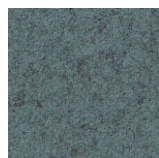
CUZ28 Silverdale



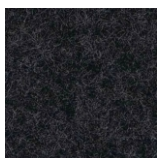
CUZ30 Silcoates



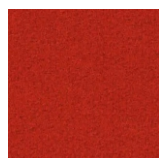
CUZ31 Trevelyan



CUZ33 Latymer



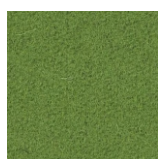
CUZ35 Bromsgrove



CUZ39 Goldsmith



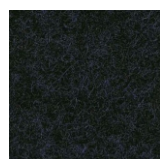
CUZ47 Fairfield



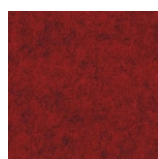
CUZ53 Bryanstone



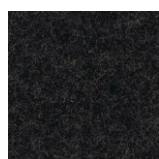
CUZ58 Dunhurst



CUZ62 Glenalmond



CUZ63 Handcross



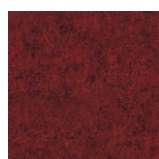
CUZ67 Kingsmead



CUZ82 Wesley



CUZ86 St Andrews



CUZ90 Edge Hill

## Synergy część I

### Skład

95% wełna, 5% poliamid

### Waga

400 g/m<sup>2</sup>

### Certyfikaty środowiskowe

EU Ecolabel

### Odporność na ścieranie

100 000 (cykle Martindale'a - EN

ISO 12947-2)

### Szerokość rolki

140 cm

### Odporność na światło

5 (EN ISO 105-B02):2014

### Certyfikaty trudnopalności

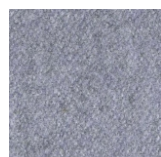
EN 1021-1

EN 1021-2

### Czyszczenie

Regularne odkurzanie.

Wycieranie wilgotną ściereczką.



LDS05 Venture



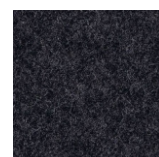
LDS07 Fate



LDS08 Serendipity



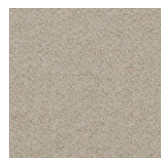
LDS16 Partner



LDS17 Mix



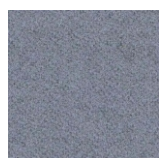
LDS18 Loop



LDS19 Chain



LDS20 Level



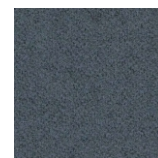
LDS21 Team



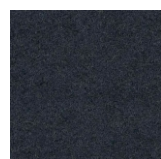
LDS22 Frame



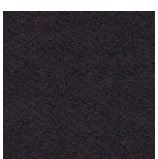
LDS23 Bracket



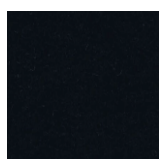
LDS24 Bond



LDS25 Compund



LDS26 Bridge



LDS27 Seek



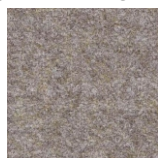
LDS28 Lateral



LDS29 Hook



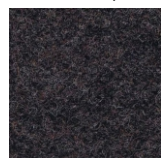
LDS31 Pair



LDS32 Affix



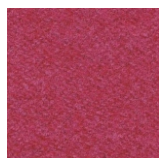
LDS33 Tag



LDS34 Wed



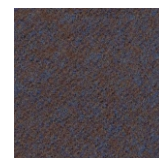
LDS35 Chemistry



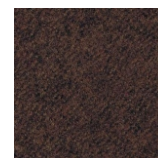
LDS36 Medley



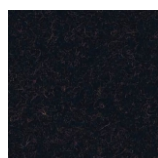
LDS37 Linea



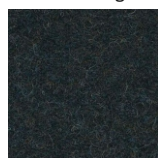
LDS38 Unity



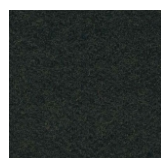
LDS39 Collective



LDS40 Co-operate



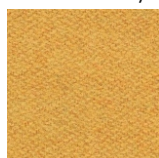
LDS41 Couple



LDS42 Interwine



LDS43 Marry



LDS44 Relate



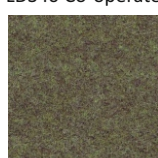
LDS45 Summon



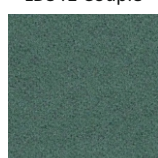
LDS46 Gather



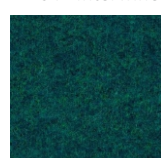
LDS47 Integrate



LDS48 Interfuse



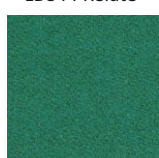
LDS49 Append



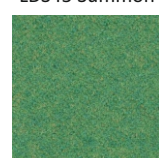
LDS50 League



LDS51 Kindness



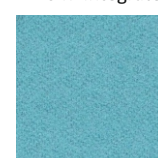
LDS52 Comply



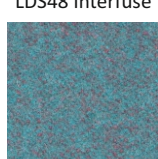
LDS53 Pact



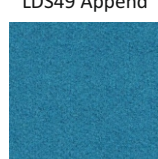
LDS54 Regard



LDS55 Support



LDS56 Kinship



LDS57 Engage



LDS58 Family



LDS59 Group



LDS60 Accord



LDS61 Assemble



LDS62 Alike



LDS63 Guild



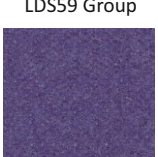
LDS64 Order



LDS65 Huddle



LDS66 Fellowship



LDS67 Warmth



LDS68 Collaborate



LDS69 Sync



LDS70 Together



LDS71 Open



LDS72 Compose



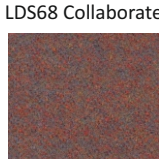
LDS73 Work



LDS74 Affinity



LDS75 Contribution



LDS76 Success



LDS77 Combo



LDS78 Cordial



LDS79 Amiable

## Synergy część II

### Skład

95% wełna, 5% poliamid

### Waga

400 g/m<sup>2</sup>

### Certyfikaty środowiskowe

EU Ecolabel

### Odporność na ścieranie

100 000 (cykle Martindale'a - EN ISO 12947-2)

### Szerokość rolki

140 cm

### Odporność na światło

5 (EN ISO 105-B02):2014

### Certyfikaty trudnopalności

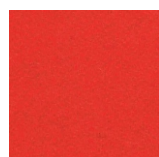
EN 1021-1

EN 1021-2

### Czyszczenie

Regularne odkurzanie.

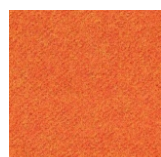
Wycieranie wilgotną ściereczką.



LDS80 Apt



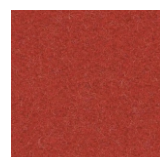
LDS81 Similar



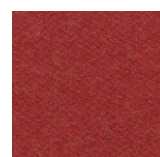
LDS82 Likeness



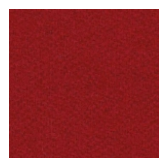
LDS83 Congregate



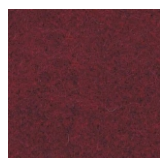
LDS84 Mutual



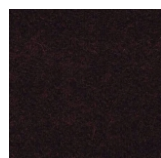
LDS85 Share



LDS86 Global



LDS87 Values



LDS88 Process

## IV GRUPA CENOWA

### Synergy Quilt Channel

#### Skład

95% wełna, 5% poliamid, podkład poliestrowo-poliuretanowy

#### Waga

700 g/m<sup>2</sup>

#### Certyfikaty środowiskowe

EU Ecolabel

#### Odporność na ścieranie

100 000 (cykle Martindale'a - EN ISO 12947-2)

#### Szerokość rolki

165 cm

#### Odporność na światło

5 (EN ISO 105-B02):2014

#### Certyfikaty trudnopalności

EN 1021-1

EN 1021-2

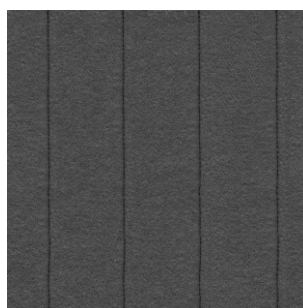
#### Czyszczenie

Regularne odkurzanie.

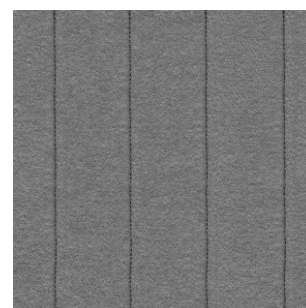
Wycieranie wilgotną ściereczką.



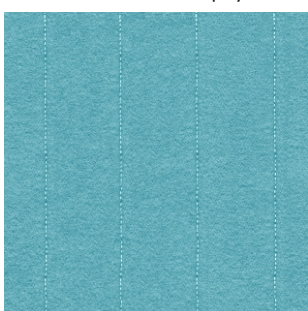
HQSC08-Serendipity



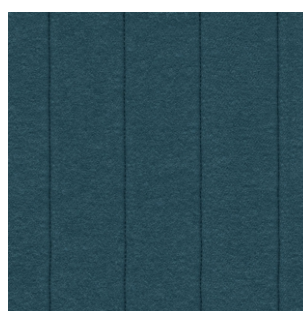
HQSC17-Mix



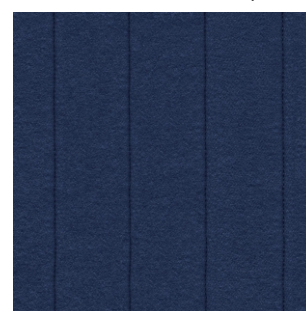
HQSC35-Chemistry



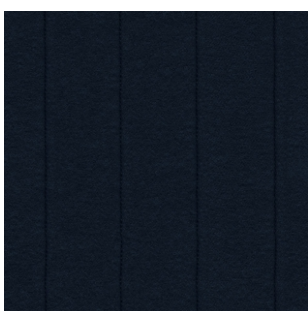
HQSC55-Support



HQSC59-Group



HQSC62-Alike



HQSC69-Sync



HQSC84-Mutual