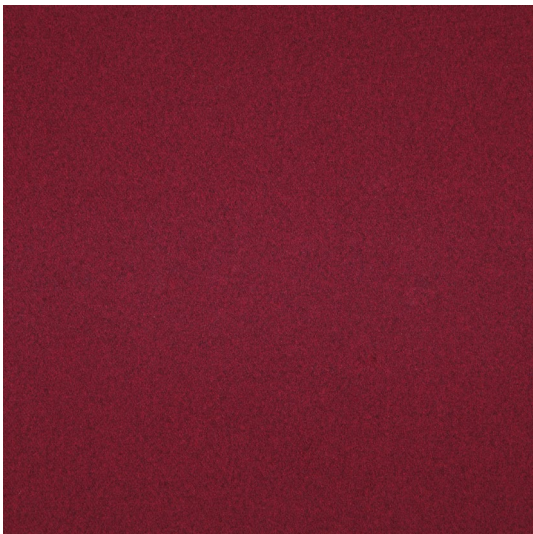


FN 019



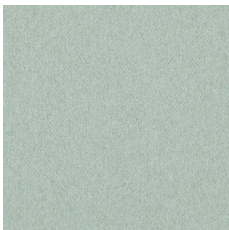
FN 020



FN 018



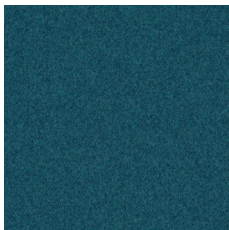
FN 017



FN 016



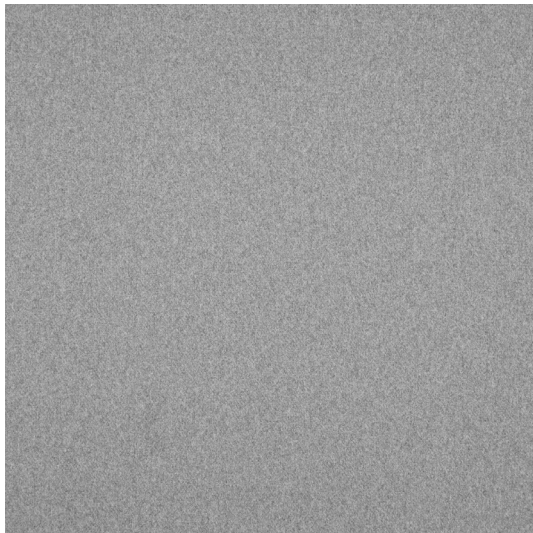
FN 015



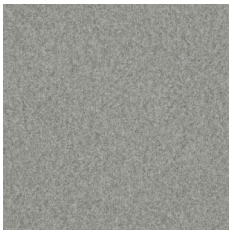
FN 014



FN 013



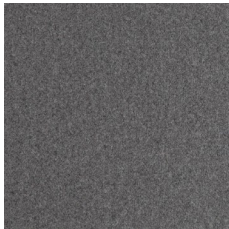
FN 005



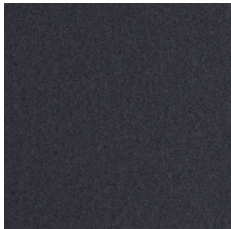
FN 001



FN 002



FN 004



FN 012

**PL**

**Skład**

100% Poliester

**Waga**

402g/m<sup>2</sup>

**Szerokość rolki**

144 cm

**Odporność na ścieranie**

100 000 cykli Martindale  
(EN ISO 12947-2)

**Pilling**

4 (EN ISO 12945-2)

**Odporność na światło**

5 (EN ISO 105-B02:2014)

**Odporność koloru na tarcie**

Mokre: 4-5 (UNI EN ISO 105-X12)  
Suche: 4-5 (UNI EN ISO 105-X12)

**Certyfikaty trudnopalności**

-BS 5852: Part 1:1979  
Ignition Source 0 (Papieros)

**DE**

**Zusammensetzung**

100% Polyester

**Gewicht**

402g/m<sup>2</sup>

**Rollenbreite**

144 cm

**Scheuerfestigkeit**

100 000 Zyklen Martindale  
(EN ISO 12947-2)

**Pilling**

4 (EN ISO 12945-2)

**Lichtechtheit**

5 (EN ISO 105-B02:2014)

**Reibechtheit**

Nass: 4-5 (UNI EN ISO 105-X12)  
Trocken: 4-5 (UNI EN ISO 105-X12)

**Feuersicherung**

-BS 5852: Part 1:1979  
Ignition Source 0 (Zigarette)

**EN**

**Composition**

100% Polyester

**Weight**

402g/m<sup>2</sup>

**Roll width**

144 cm

**Abrasion Resistance**

100 000 Martindale cycles  
(EN ISO 12947-2)

**Pilling**

4 (EN ISO 12945-2)

**Light Fastness**

5 (EN ISO 105-B02:2014)

**Fastness to Rubbing**

Wet: 4-5 (UNI EN ISO 105-X12)  
Dry: 4-5 (UNI EN ISO 105-X12)

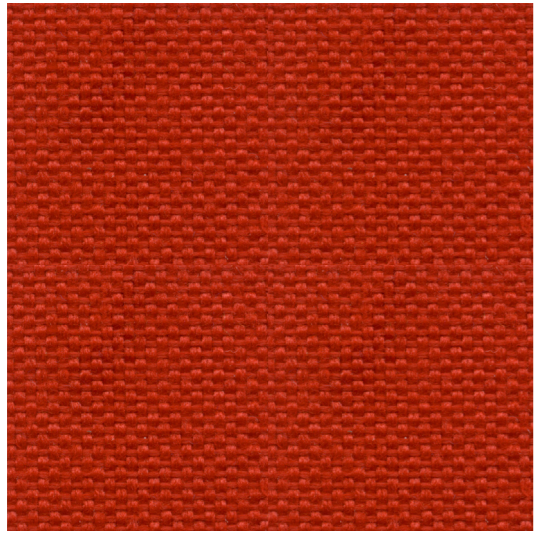
**Flammability**

-BS 5852: Part 1:1979  
Ignition Source 0 (Cigarette)

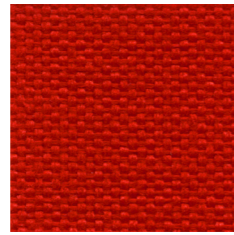


apretura wodoodporna  
wasserdichtes Finish  
water repellent

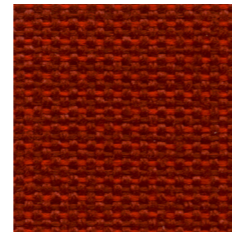




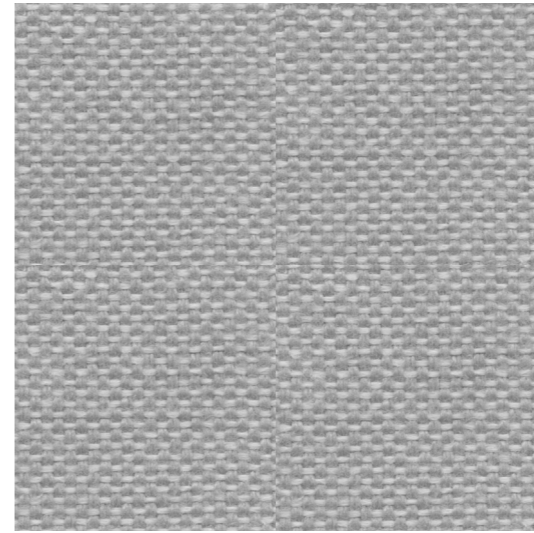
PA 527



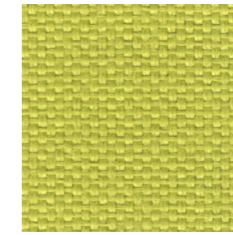
PA 010



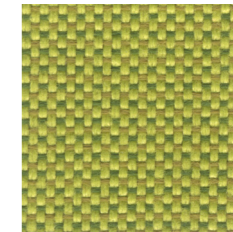
PA 511



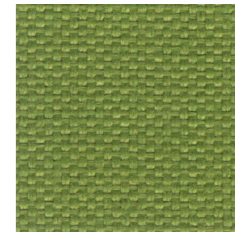
PA 854



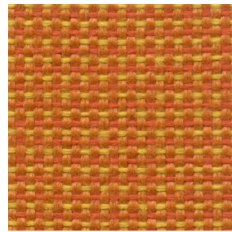
PA 060



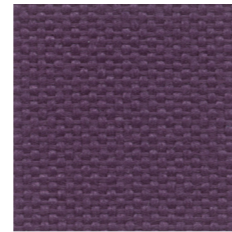
PA 560



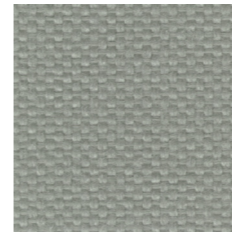
PA 065



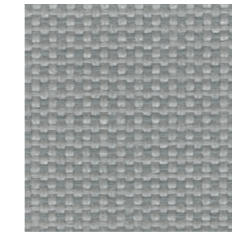
PA 930



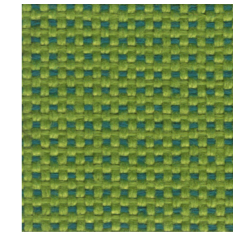
PA 020



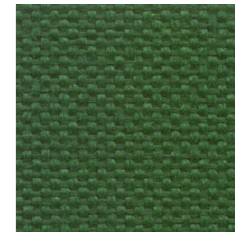
PA 814



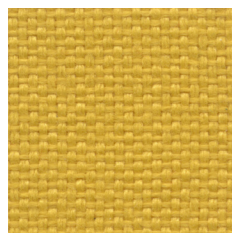
PA 555



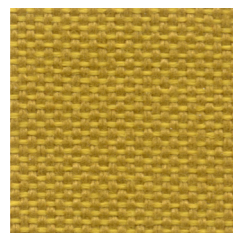
PA 565



PA 736



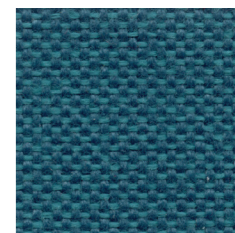
PA 390



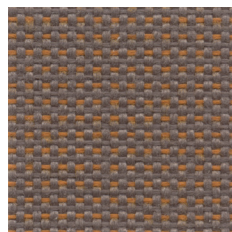
PA 352



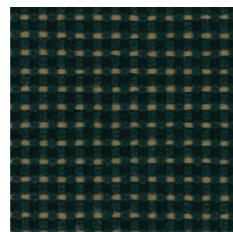
PA 810



PA 653



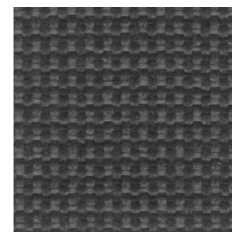
PA 531



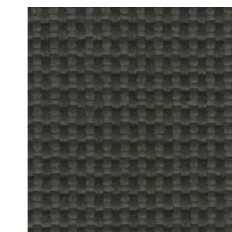
PA 533



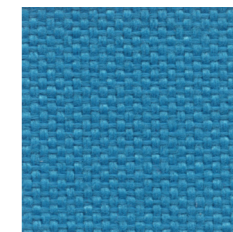
PA 153



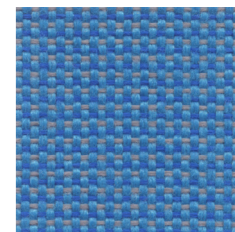
PA 571



PA 570



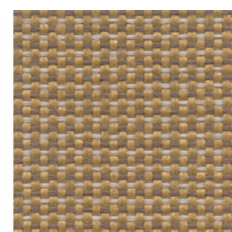
PA 050



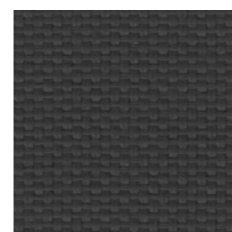
PA 550



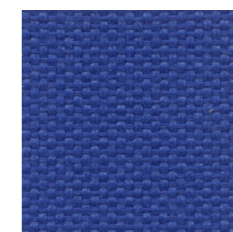
PA 030



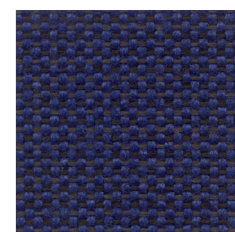
PA 532



PA 833



PA 040



PA 541



Trevira CS®

PASTEL



**PL**

**Skład**  
100% POLIESTER TREVIRA CS®

**Waga**  
260g/m<sup>2</sup> ± 5%

**Szerokość rolki**  
140 cm

**Odporność na ścieranie**  
70 000 cykli Martindale  
(EN ISO 12947-2:2017)

**Pilling**  
5 (ISO 12945-2:2002)

**Odporność koloru na tarcie:**  
Mokro: 5 (ISO 105-X12:2016)  
Sucho: 5 (ISO 105-X12:2016)

**Odporność na światło**  
6-7 (EN ISO 105-B02:2014)

**Certyfikaty trudnopalności**  
-BS EN 1021-1:2006  
-BS EN 1021-2:2006  
-BS 5852 : 2006 (Crib 5)  
-BS 7176 Medium Hazard  
-NF P92 503-507 (M1)  
-DIN 4102-1 (B1)  
-IMO A 652 (16) part 8

**DE**

**Zusammensetzung**  
100% POLYESTER TREVIRA CS®

**Gewicht**  
260g/m<sup>2</sup> ± 5%

**Rollenbreite**  
140 cm

**Scheuerfestigkeit**  
70 000 Zyklen Martindale  
(EN ISO 12947-2:2017)

**Pilling**  
5 (ISO 12945-2:2002)

**Reibechtheit**  
Nass: 5 (ISO 105-X12:2016)  
Trocken: 5 (ISO 105-X12:2016)

**Lichtechtheit**  
6-7 (EN ISO 105-B02:2014)

**Feuersicherung**  
-BS EN 1021-1:2006  
-BS EN 1021-2:2006  
-BS 5852 : 2006 (Crib 5)  
-BS 7176 Medium Hazard  
-NF P92 503-507 (M1)  
-DIN 4102-1 (B1)  
-IMO A 652 (16) part 8

**EN**

**Composition**  
100% POLYESTER TREVIRA CS®

**Weight**  
260g/m<sup>2</sup> ± 5%

**Roll width**  
140 cm

**Abrasion Resistance**  
70 000 Martindale cycles  
(EN ISO 12947-2:2017)

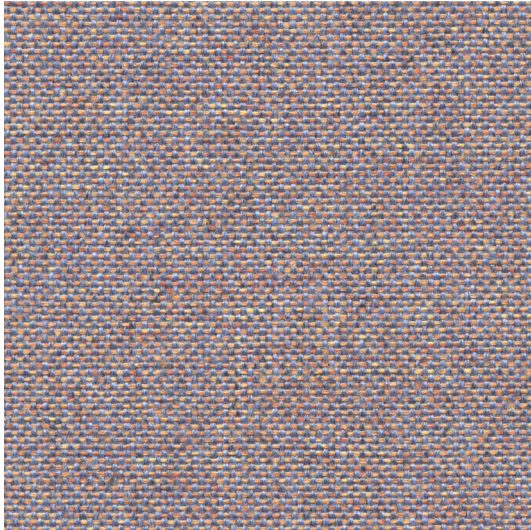
**Pilling**  
5 (ISO 12945-2:2002)

**Fastness to Rubbing**  
Wet: 5 (ISO 105-X12:2016)  
Dry: 5 (ISO 105-X12:2016)

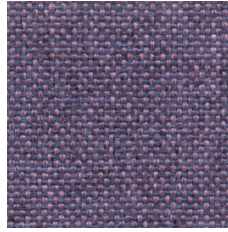
**Light Fastness**  
6-7 (EN ISO 105-B02:2014)

**Flammability**  
-BS EN 1021-1:2006  
-BS EN 1021-2:2006  
-BS 5852 : 2006 (Crib 5)  
-BS 7176 Medium Hazard  
-NF P92 503-507 (M1)  
-DIN 4102-1 (B1)  
-IMO A 652 (16) part 8





RC 658



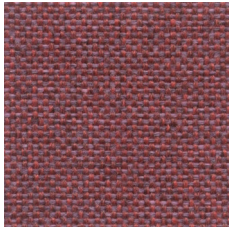
RC 552



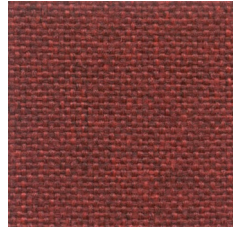
RC 656



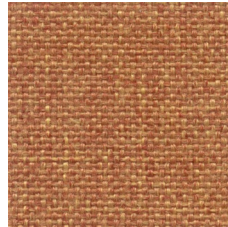
RC 655



RC 455



RC 454



RC 353



RC 754



RC 752



RC 753



RC 152



RC 153



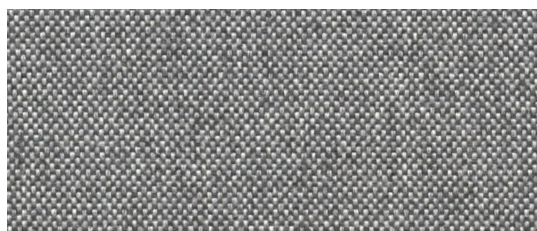
RC 851



RC 854



RC 255



RC 852

**PL**
**Skład**

100% Poliester Trevira CS®

**Waga**

250g/m<sup>2</sup> ± 5%

**Szerokość rolki**

140 cm

**Odporność na ścieranie**

70.000 cykli Martindale  
(UNI EN ISO 12947-2:2017)

**Pilling**

5 (UNI EN ISO 12945-2:2002)

**Odporność na światło**

7 (EN ISO 105-B02:2014)

**Odporność koloru na tarcie**

Mokre: 4-5 (UNI EN ISO 105-X12:2016)  
Suche: 4-5 (UNI EN ISO 105-X12:2016)

**Certyfikaty trudnopalności**

- EN 1021-1: 2006
- EN 1021-2: 2006
- BS 7176:2007 (Medium Hazard)
- BS 5852:2006 (CRIB 5)
- NFP 92-501-7 (M1)
- DIN 4102-1 (B1)
- IMO Res. A 652 (16) Part 8
- AM 18 (NF D 60013)
- UNI 9175 Class 1 IM

**DE**
**Zusammensetzung**

100% Poliester Trevira CS®

**Gewicht**

250g/m<sup>2</sup> ± 5%

**Rollenbreite**

140 cm

**Scheuerfestigkeit**

70.000 Zyklen Martindale  
(UNI EN ISO 12947-2:2017)

**Pilling**

5 (UNI EN ISO 12945-2:2002)

**Lichtechtheit**

7 (EN ISO 105-B02:2014)

**Reibechtheit**

Nass: 4-5 (UNI EN ISO 105-X12:2016)  
Trocken: 4-5 (UNI EN ISO 105-X12:2016)

**Feuersicherung**

- EN 1021-1: 2006
- EN 1021-2: 2006
- BS 7176:2007 (Medium Hazard)
- BS 5852:2006 (CRIB 5)
- NFP 92-501-7 (M1)
- DIN 4102-1 (B1)
- IMO Res. A 652 (16) Part 8
- AM 18 (NF D 60013)
- UNI 9175 Class 1 IM

**EN**
**Composition**

100% Poliester Trevira CS®

**Weight**

250g/m<sup>2</sup> ± 5%

**Roll width**

140 cm

**Abrasion Resistance**

70.000 Martindale cycles  
(UNI EN ISO 12947-2:2017)

**Pilling**

5 (UNI EN ISO 12945-2:2002)

**Light Fastness**

7 (EN ISO 105-B02:2014)

**Fastness to Rubbing**

Wet: 4-5 (UNI EN ISO 105-X12:2016)  
Dry: 4-5 (UNI EN ISO 105-X12:2016)

**Flammability**

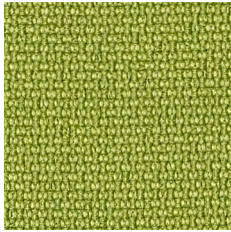
- EN 1021-1: 2006
- EN 1021-2: 2006
- BS 7176:2007 (Medium Hazard)
- BS 5852:2006 (CRIB 5)
- NFP 92-501-7 (M1)
- DIN 4102-1 (B1)
- IMO Res. A 652 (16) Part 8
- AM 18 (NF D 60013)
- UNI 9175 Class 1 IM



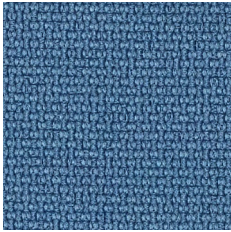




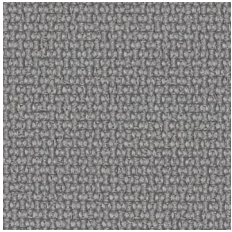
G 0095



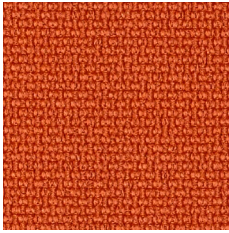
G 0069



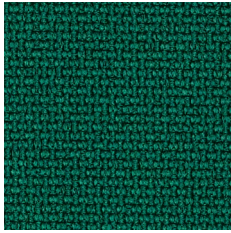
G 0081



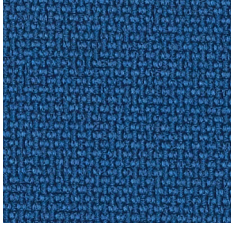
G 0082



G 0044



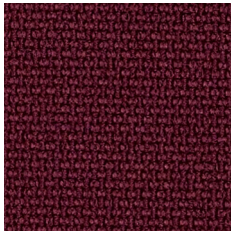
G 0070



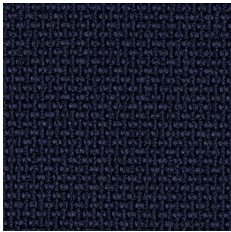
G 0682



G 0083



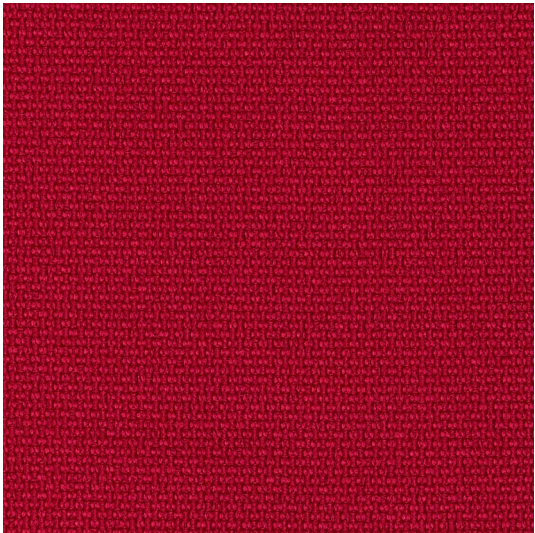
G 0102



G 0683



G 0099



G 0003



**PL**

**Skład**  
100% Poliester

**Waga**  
365g/m<sup>2</sup>

**Szerokość rolki**  
140 cm

**Odporność na ścieranie**  
150 000 cykli Martindale  
(EN ISO 12947-2-1998)/AC 2008  
według BS EN 14465:2003

**Pilling**  
4-5 (UNI EN ISO 12945/2):2000

**Odporność na światło**  
6-7 (ISO 105-B02: 2014) Method 2

**Odporność koloru na tarcie:**  
Mokre: 4-5 (UNI EN ISO 105-X12)  
Suche: 5 (UNI EN ISO 105-X12)

**Certyfikaty trudnopalności**  
-BS EN 1021-1 2014  
-BS EN 1021-2 2014  
-BS 5852 Part1: 1979  
-UNI 9175:2010 Class 11M

**DE**

**Zusammensetzung**  
100% Polyester

**Gewicht**  
365g/m<sup>2</sup>

**Rollenbreite**  
140 cm

**Scheuerfestigkeit**  
150 000 Zyklen Martindale  
(EN ISO 12947-2-1998)/AC 2008  
gemäß BS EN 14465:2003

**Pilling**  
4-5 (UNI EN ISO 12945/2):2000

**Lichtechtheit**  
6-7 (ISO 105-B02: 2014) Method 2

**Reibechtheit**  
Nass: 4-5 (UNI EN ISO 105-X12)  
Trocken: 5 (UNI EN ISO 105-X12)

**Feuersicherung**  
-BS EN 1021-1 2014  
-BS EN 1021-2 2014  
-BS 5852 Part1: 1979  
-UNI 9175:2010 Class 11M

**EN**

**Composition**  
100% Polyester

**Weight**  
365g/m<sup>2</sup>

**Roll width**  
140 cm

**Abrasion Resistance**  
150 000 Martindale cycles  
(EN ISO 12947-2-1998)/AC 2008  
according to BS EN 14465:2003

**Pilling**  
4-5 (UNI EN ISO 12945/2):2000

**Light Fastness**  
6-7 (ISO 105-B02: 2014) Method 2

**Fastness to Rubbing**  
Wet: 4-5 (UNI EN ISO 105-X12)  
Dry: 5 (UNI EN ISO 105-X12)

**Flammability**  
-BS EN 1021-1 2014  
-BS EN 1021-2 2014  
-BS 5852 Part1: 1979  
-UNI 9175:2010 Class 11M







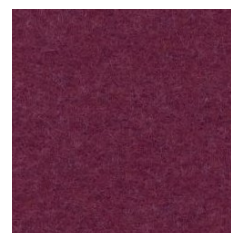
CUZ2W



CUZ39



CUZ18



CUZ21



CUZ90



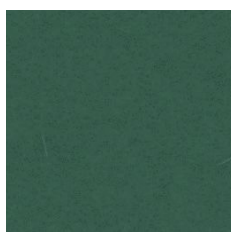
CUZ63



CUZ1L



CUZ1K



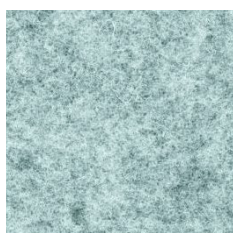
CUZ1N



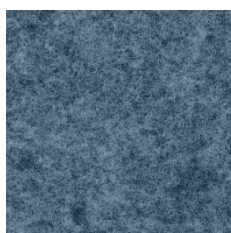
CUZ31



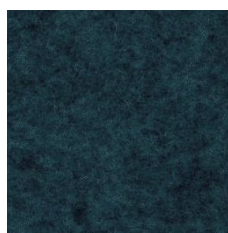
CUZ02



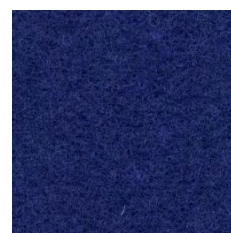
CUZ1R



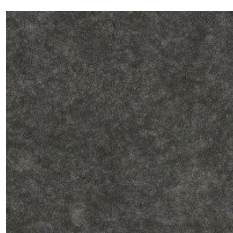
CUZ1W



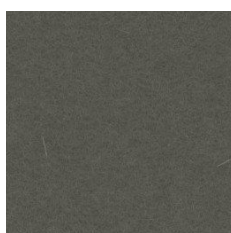
CUZ62



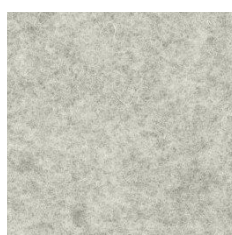
CUZ09



CUZ67



CUZ12



CUZ28



CUZ30



CUZ08



CUZ1E

**PL****Skład**

100% Wełna

**Waga**

460 g/m<sup>2</sup> ± 5%

**Szerokość rolki**

140 cm

**Odporność na ścieranie**

65 000 cykli Martindale'a  
(BS EN ISO 12947-2:2016)

**Pilling**

>3 (UNI EN ISO 12945/2):2000

**Odporność na światło**

5 (BS EN ISO 105:BO2:2014-BS6)

**Odporność koloru na tarcie**

Mokre: 5 (BS EN ISO 105-X12:2016)  
Suche: 4-5 (BS EN ISO 105-X12:2016)

**Certyfikaty trudnopalności**

-BS EN 1021 - 1:2014  
-BS EN 1021 - 2:2014  
-BS7176:2007 Low Hazard  
-UN 9175:2010 1IM  
-NFD60-013

**Czyszczenie**

-na sucho

**DE****Zusammensetzung**

100% Schurwolle

**Gewicht**

460 g/m<sup>2</sup> ± 5%

**Rollenbreite**

140 cm

**Scheuerfestigkeit**

65 000 Zyklen Martindale  
(BS EN ISO 12947-2:2016)

**Pilling**

>3 (UNI EN ISO 12945/2):2000

**Lichtechtheit**

5 (BS EN ISO 105:BO2:2014-BS6)

**Reibechtheit**

Nass: 5 (BS EN ISO 105-X12:2016)  
Trocken: 4-5 (BS EN ISO 105-X12:2016)

**Feuersicherung**

-BS EN 1021 - 1:2014  
-BS EN 1021 - 2:2014  
-BS7176:2007 Low Hazard  
-UN 9175:2010 1IM  
-NFD60-013

**Reinigung**

-Trockenreinigung

**EN****Composition**

100% Virgin Wool

**Weight**

460 g/m<sup>2</sup> ± 5%

**Roll width**

140 cm

**Abrasion Resistance**

65 000 Martindale cycles  
(BS EN ISO 12947-2:2016)

**Pilling**

>3 (UNI EN ISO 12945/2):2000

**Light Fastness**

5 (BS EN ISO 105:BO2:2014-BS6)

**Fastness to Rubbing**

Wet: 5 (BS EN ISO 105-X12:2016)  
Dry: 4-5 (BS EN ISO 105-X12:2016)

**Flammability**

-BS EN 1021 - 1:2014  
-BS EN 1021 - 2:2014  
-BS7176:2007 Low Hazard  
-UN 9175:2010 1IM  
-NFD60-013

**Cleaning**

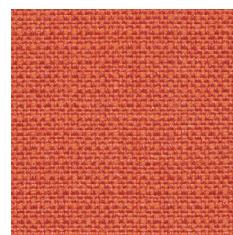
-dry cleaning







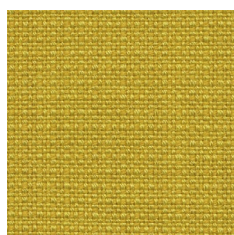
CS 033



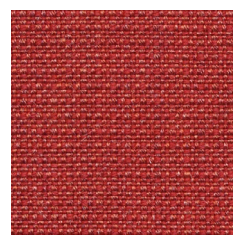
CS 430



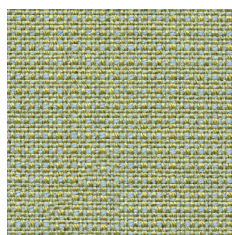
CS 032



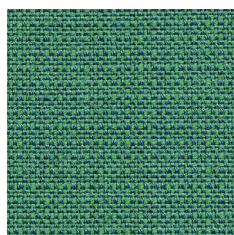
CS 421



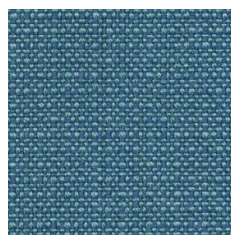
CS 432



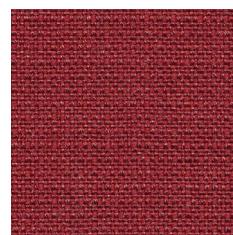
CS 201



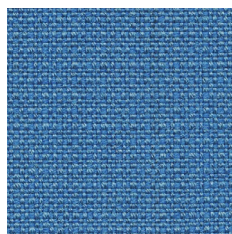
CS 605



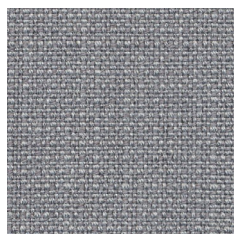
CS 602



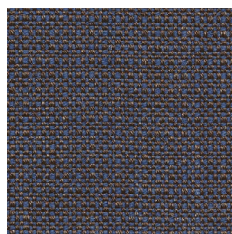
CS 441



CS 601



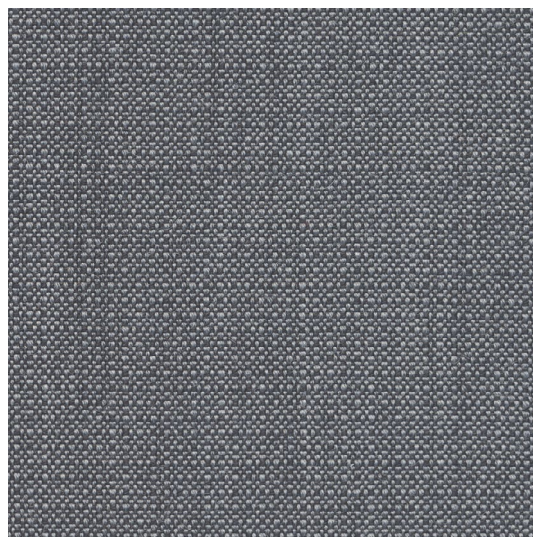
CS 021



CS 125



CS 013



CS 022

**PL****Skład**

93% Wełna, 7% Poliamid

**Waga**

328 g/m<sup>2</sup>

**Szerokość rolki**

140 cm

**Odporność na ścieranie**

200.000 cykli Martindale  
(BS EN ISO 12947-2:1998 AC 2008)

**Pilling**

4-5 (BS EN ISO 12945-2:2000)

**Odporność na światło**

6-7 (ISO 105-B02)

**Odporność koloru na tarcie**

Mokre: 5 (UNI EN ISO 105-X12):2016  
Suche: 5 (UNI EN ISO 105-X12):2016

**Certyfikaty trudnopalności**

-BS EN 1021 1&2:2014  
-BS:5852 Part 1:1979  
-UNI 9175: 2010 Class 1 IM

**Inne**

-IMO Res. A.652 (16)  
-IMO Res.MSC 61 (67) Annex 1, Part 8  
-IMO Res.MSC 307 (88) Annex 1, Part 8

**DE****Zusammensetzung**

93% Schurwolle, 7% Poliamid

**Gewicht**

328 g/m<sup>2</sup>

**Rollenbreite**

140 cm

**Scheuerfestigkeit**

200.000 Zyklen Martindale  
(BS EN ISO 12947-2:1998 AC 2008)

**Pilling**

4-5 (BS EN ISO 12945-2:2000)

**Lichtechtheit**

6-7 (ISO 105-B02)

**Reibechtheit**

Nass: 4 (UNI EN ISO 105-X12):2016  
Trocken: 5 (UNI EN ISO 105-X12):2016

**Feuersicherung**

-BS EN 1021 1&2:2014  
-BS:5852 Part 1:1979  
-UNI 9175: 2010 Class 1 IM

**Andere**

-IMO Res. A.652 (16)  
-IMO Res.MSC 61 (67) Annex 1, Part 8  
-IMO Res.MSC 307 (88) Annex 1, Part 8

**EN****Composition**

93% Wool, 7% Polyamid

**Weight**

328 g/m<sup>2</sup>

**Roll width**

140 cm

**Abrasion Resistance**

200.000 Martindale cycles  
(BS EN ISO 12947-2:1998 AC 2008)

**Pilling**

4-5 (BS EN ISO 12945-2:2000)

**Light Fastness**

6-7 (ISO 105-B02)

**Fastness to Rubbing**

Wet: 4 (UNI EN ISO 105-X12):2016  
Dry: 5 (UNI EN ISO 105-X12):2016

**Flammability**

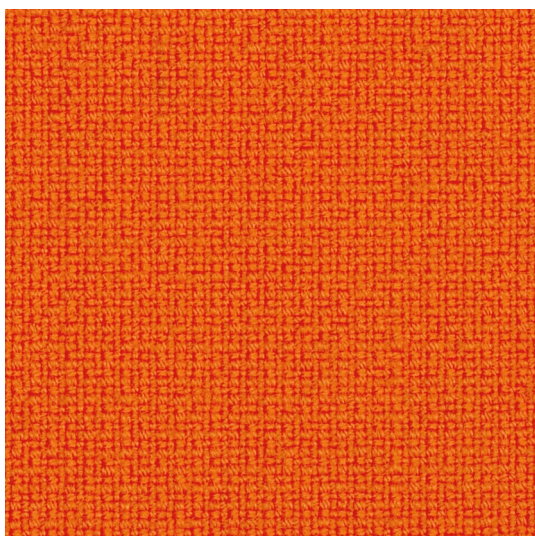
-BS EN 1021 1&2:2014  
-BS:5852 Part 1:1979  
-UNI 9175: 2010 Class 1 IM

**Other**

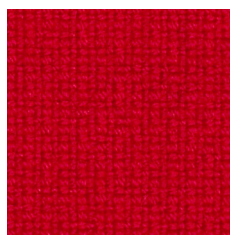
-IMO Res. A.652 (16)  
-IMO Res.MSC 61 (67) Annex 1, Part 8  
-IMO Res.MSC 307 (88) Annex 1, Part 8



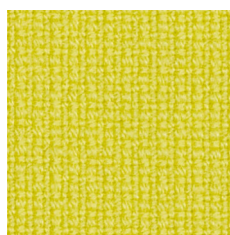




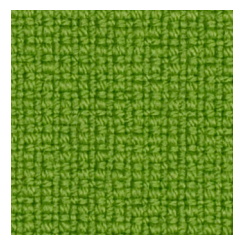
F 3016



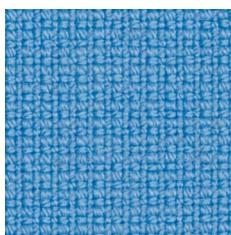
F 4119



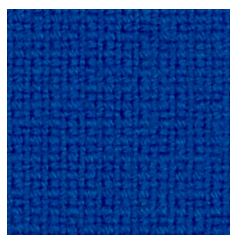
F 2067



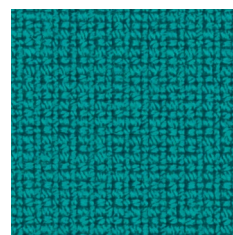
F 8035



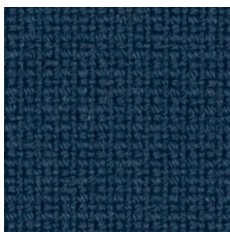
F 6118



F 6075



F 7016



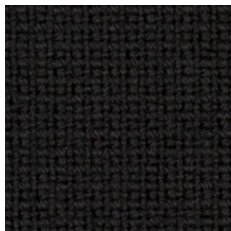
F 6071



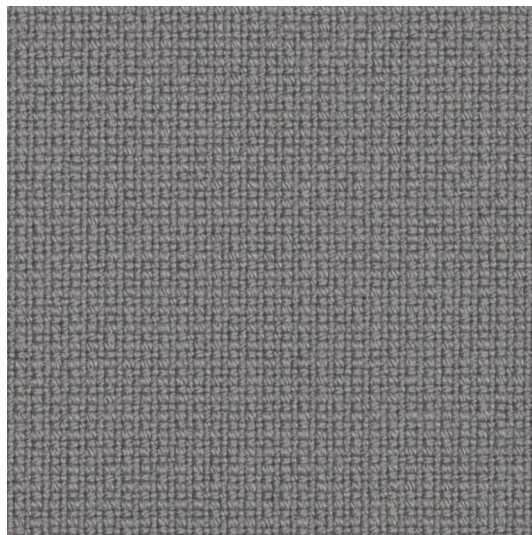
F 0017



F 0019



F 0099



F 0078

**PL****Skład**

95% Wełna, 5% Poliamid

**Waga**

450 g/m<sup>2</sup>

**Szerokość rolki**

140 cm

**Odporność na ścieranie**

210 000 cykli Martindale  
(BS EN ISO 12947-2: 1998)

**Pilling**

3-4 (BS EN ISO 12945-2: 2000)

**Odporność na światło**

5-7 (BS EN ISO 105-B02: 2014)-BS7

**Odporność koloru na tarcie**

Mokre: 4-5 (UNI EN ISO 105-X12: 2002)  
Suche: 4-5 (UNI EN ISO 105-X12: 2002)

**Certyfikaty trudnopalności**

-BS EN 1021-1: 2014  
-BS EN 1021-2: 2014  
-BS 5852: 2006 Clause 11 Crib 5  
-UNI 9175: 2010 Class 1 IM  
-AM 18 NF D 60-013

**Inne**

-IMO Res. A.652 (16)  
-IMO Res.MSC 61 (67) Annex 1, Part 8  
-IMO Res.MSC 307 (88) Annex 1, Part 8

**Czyszczenie**

-na sucho

**DE****Zusammensetzung**

95% Schurwolle, 5% Poliamid

**Gewicht**

450 g/m<sup>2</sup>

**Rollenbreite**

140 cm

**Scheuerfestigkeit**

210 000 Zyklen Martindale  
(BS EN ISO 12947-2: 1998)

**Pilling**

3-4 (BS EN ISO 12945-2: 2000)

**Lichtechtheit**

5-7 (BS EN ISO 105-B02: 2014)-BS7

**Reibechtheit**

Nass: 4-5 (UNI EN ISO 105-X12: 2002)  
Trocken: 4-5 (UNI EN ISO 105-X12: 2002)

**Feuersicherung**

-BS EN 1021-1: 2014  
-BS EN 1021-2: 2014  
-BS 5852: 2006 Clause 11 Crib 5  
-UNI 9175: 2010 Class 1 IM  
-AM 18 NF D 60-013

**Andere**

-IMO Res. A.652 (16)  
-IMO Res.MSC 61 (67) Annex 1, Part 8  
-IMO Res.MSC 307 (88) Annex 1, Part 8

**Reinigung**

-Trockenreinigung

**EN****Composition**

95% Wool, 5% Polyamide

**Weight**

450 g/m<sup>2</sup>

**Roll width**

140 cm

**Abrasion Resistance**

210 000 Martindale cycles  
(BS EN ISO 12947-2: 1998)

**Pilling**

3-4 (BS EN ISO 12945-2: 2000)

**Light Fastness**

5-7 (BS EN ISO 105-B02: 2014)-BS7

**Fastness to Rubbing**

Wet: 4-5 (UNI EN ISO 105-X12: 2002)  
Dry: 4-5 (UNI EN ISO 105-X12: 2002)

**Flammability**

-BS EN 1021-1: 2014  
-BS EN 1021-2: 2014  
-BS 5852: 2006 Clause 11 Crib 5  
-UNI 9175: 2010 Class 1 IM  
-AM 18 NF D 60-013

**Other**

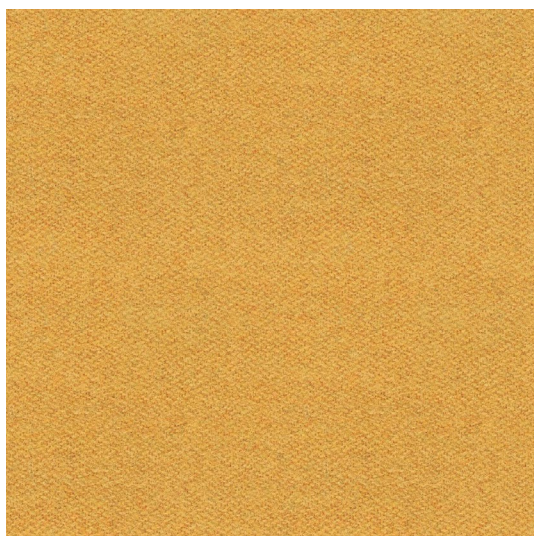
-IMO Res. A.652 (16)  
-IMO Res.MSC 61 (67) Annex 1, Part 8  
-IMO Res.MSC 307 (88) Annex 1, Part 8

**Cleaning**

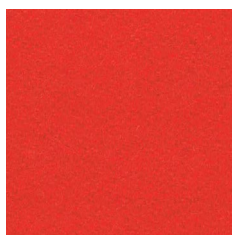
-dry cleaning



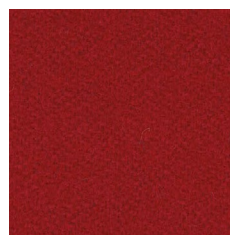




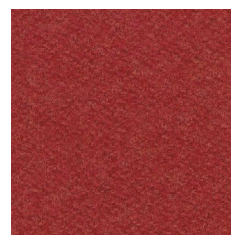
LDS 44



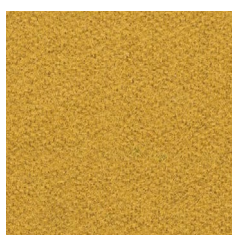
LDS 80



LDS 86



LDS 85



LDS 28



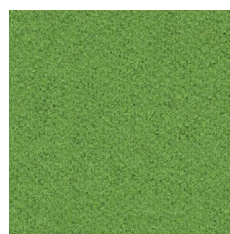
LDS 82



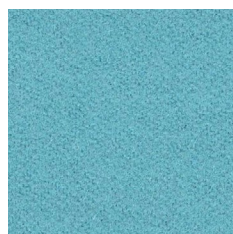
LDS 81



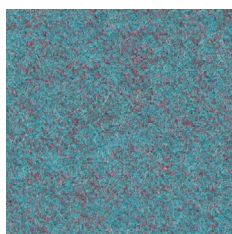
LDS 46



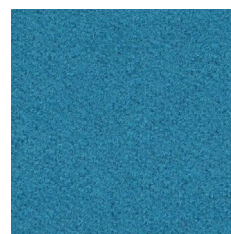
LDS 47



LDS 55



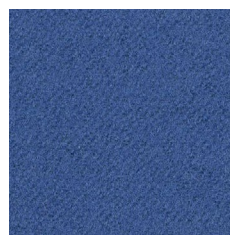
LDS 56



LDS 57



LDS 59



LDS 63



LDS 62



LDS 08



LDS 21



LDS 16



LDS 35



LDS 17

**PL****Skład**

95% Wełna, 5% Poliamid

**Waga**

400g/m<sup>2</sup> ± 5%

**Szerokość rolki**

140 cm

**Odporność na ścieranie**

100.000 cykli Martindale  
(BS EN ISO 12947-2: 2016)

**Pilling**

4 (BS EN ISO 12945-2: 2000)

**Odporność na światło**

5 (BS EN ISO 105-B02: 2014-BS6)

**Odporność koloru na tarcie**

Mokre: 4 (UNI EN ISO 105-X12)  
Suche: 4 (UNI EN ISO 105-X12)

**Certyfikaty trudnopalności**

-BS EN 1021-1: 2014  
-BS EN 1021-2: 2014  
-BS 7176 Low Hazard  
-UNI 9175: 2010 Class 1 IM  
-ÖNORM B 3825 & A 3800-1

**DE****Zusammensetzung**

95% Schurwolle, 5% Polyamid

**Gewicht**

400g/m<sup>2</sup> ± 5%

**Rollenbreite**

140 cm

**Scheuerfestigkeit**

100.000 Zyklen Martindale  
(BS EN ISO 12947-2: 2016)

**Pilling**

4 (BS EN ISO 12945-2: 2000)

**Lichtechtheit**

5 (BS EN ISO 105-B02: 2014-BS6)

**Reibechtheit**

Nass: 4 (UNI EN ISO 105-X12)  
Trocken: 4 (UNI EN ISO 105-X12)

**Feuersicherung**

-BS EN 1021-1: 2014  
-BS EN 1021-2: 2014  
-BS 7176 Low Hazard  
-UNI 9175: 2010 Class 1 IM  
-ÖNORM B 3825 & A 3800-1

**EN****Composition**

95% Virgin Wool, 5% Polyamide

**Weight**

400g/m<sup>2</sup> ± 5%

**Roll width**

140 cm

**Abrasion Resistance**

100.000 Martindale cycles  
(BS EN ISO 12947-2: 2016)

**Pilling**

4 (BS EN ISO 12945-2: 2000)

**Light Fastness**

5 (BS EN ISO 105-B02: 2014-BS6)

**Fastness to Rubbing**

Wet: 4 (UNI EN ISO 105-X12)  
Dry: 4 (UNI EN ISO 105-X12)

**Flammability**

-BS EN 1021-1: 2014  
-BS EN 1021-2: 2014  
-BS 7176 Low Hazard  
-UNI 9175: 2010 Class 1 IM  
-ÖNORM B 3825 & A 3800-1



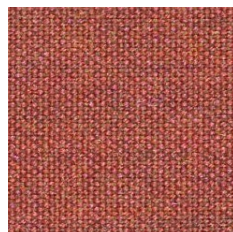




RX 612



RX 643



RX 632



RX 933



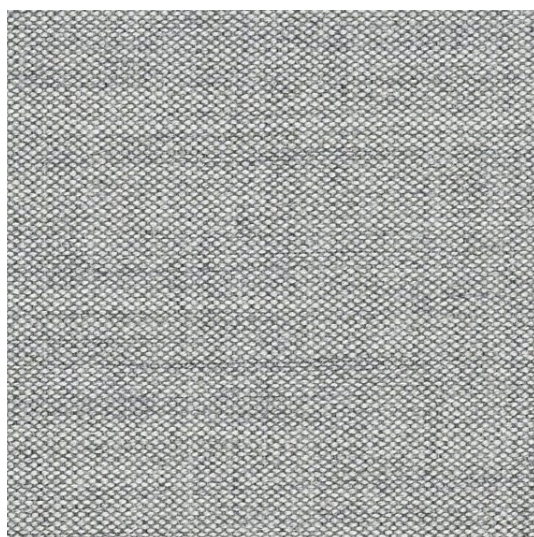
RX 912



RX 733



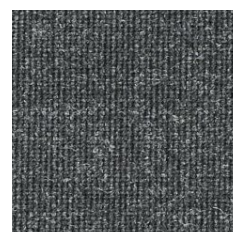
RX 762



RX 123



RX 163



RX 173



RX 393

**PL****Skład**

90% Wełna, 10% Nylon

**Waga**

~300 g/m<sup>2</sup>

**Szerokość rolki**

138 cm

**Odporność na ścieranie**

100 000 cykli Martindale  
(EN ISO 12947-2:2016)

**Pilling**

4-5 (EN ISO 12945-2:2000)

**Odporność na światło**

5-7 (EN ISO 105-B02:2014)

**Odporność koloru na tarcie**

Mokre: 4-5 (EN ISO 105-X12:2001)  
Suche: 4-5 (EN ISO 105-X12:2001)

**Certyfikaty trudnopalności**

-BS EN 1021-1/2:2014  
-BS 5852:Part 1:1979  
-Önorm B1/Q1  
-NF D 60 013  
-UNI 9175 1IM  
-IMO FTP Code 2010: Part 8

**Czyszczenie**

Odkurzanie i czyszczenie chemiczne

**DE****Zusammensetzung**

90% Schurwolle, 10% Nylon

**Gewicht**

~300 g/m<sup>2</sup>

**Rollenbreite**

138 cm

**Scheuerfestigkeit**

100 000 Zyklen Martindale  
(EN ISO 12947-2:2016)

**Pilling**

4-5 (EN ISO 12945-2:2000)

**Lichtechtheit**

5-7 (EN ISO 105-B02:2014)

**Reibechtheit**

Nass: 4-5 (EN ISO 105-X12:2001)  
Trocken: 4-5 (EN ISO 105-X12:2001)

**Feuersicherung**

-BS EN 1021-1/2:2014  
-BS 5852:Part 1:1979  
-Önorm B1/Q1  
-NF D 60 013  
-UNI 9175 1IM  
-IMO FTP Code 2010: Part 8

**Reinigung**

Staubsaugen und Reinigung

**EN****Composition**

90% Virgin Wool, 10% Nylon

**Weight**

~300 g/m<sup>2</sup>

**Roll width**

138 cm

**Abrasion Resistance**

100 000 Martindale cycles  
(EN ISO 12947-2:2016)

**Pilling**

4-5 (EN ISO 12945-2:2000)

**Light Fastness**

5-7 (EN ISO 105-B02:2014)

**Fastness to Rubbing**

Wet: 4-5 (EN ISO 105-X12:2001)  
Dry: 4-5 (EN ISO 105-X12:2001)

**Flammability**

-BS EN 1021-1/2:2014  
-BS 5852:Part 1:1979  
-Önorm B1/Q1  
-NF D 60 013  
-UNI 9175 1IM  
-IMO FTP Code 2010: Part 8

**Cleaning**

Vacuuming and dry cleaning





## Blaty HPL



biały white



czarny black

## Płyta laminowana



U570



U112



U164



U190



D3798

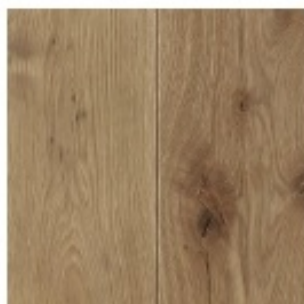
## Klejonka dębowa



Klejonka  
dębowa

## Panele drewniane

Treehouse & Beachhouse



O1



P1



P2



P4

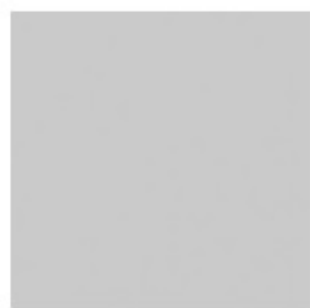


P3

## Metal struktura



RAL9010s



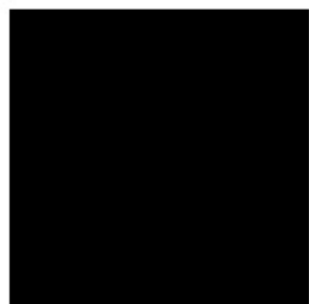
RAL7047s



RAL7045s



RAL7024s



RAL9005s