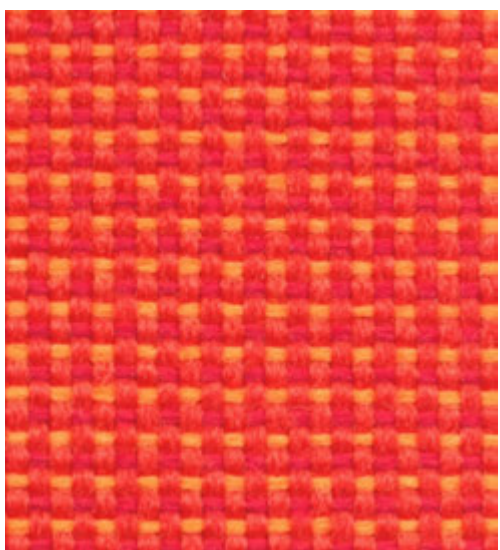
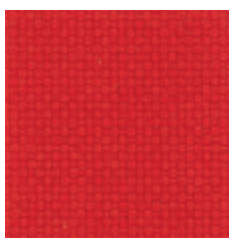


trevira CS

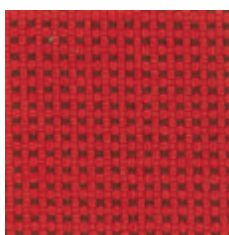
PASTEL 



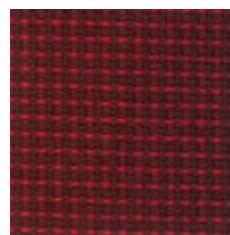
PA 515



PA 010



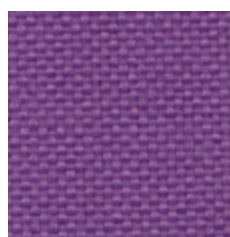
PA 510



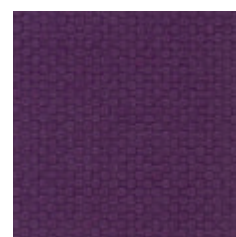
PA 511



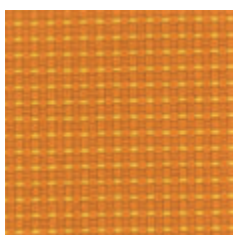
PA 015



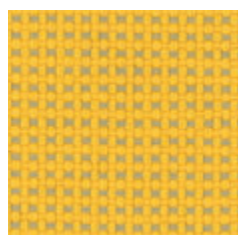
PA 025



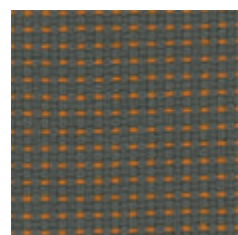
PA 020



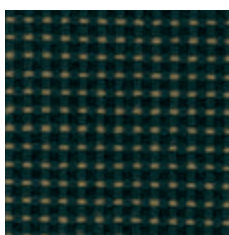
PA 516



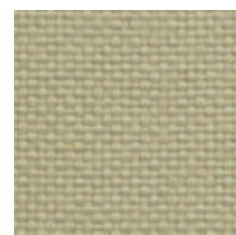
PA 517



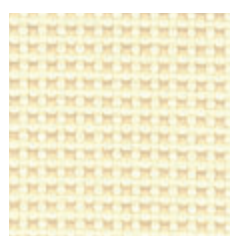
PA 531



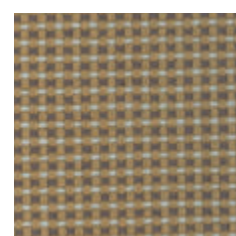
PA 533



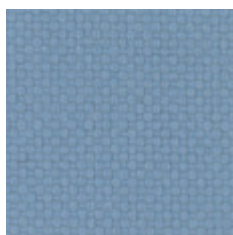
PA 030



PA 534



PA 532



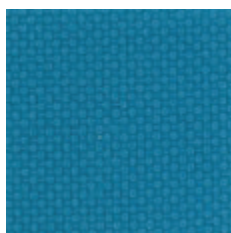
PA 045



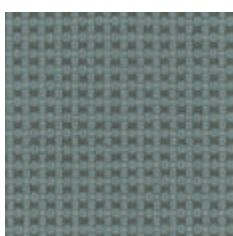
PA 541



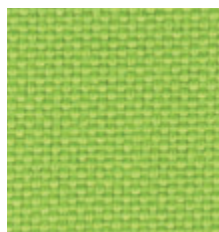
PA 040



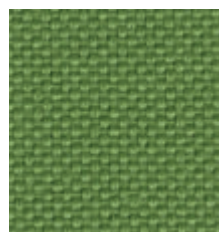
PA 050



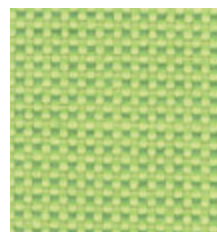
PA 555



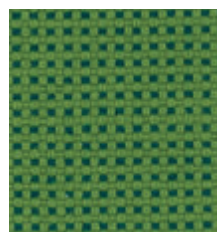
PA 060



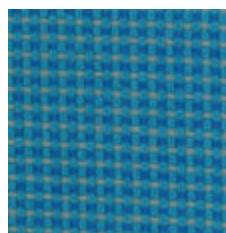
PA 065



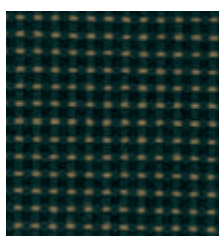
PA 560



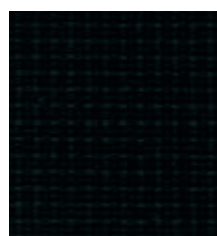
PA 565



PA 550



PA 571

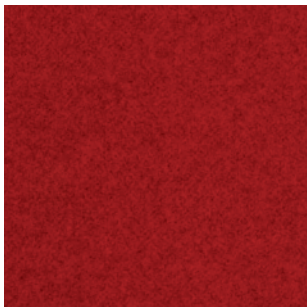


PA 570

- D** – 100% Polyestere
- Trevira CS
- Gewicht 260 ± 5% g/m²
- Scheuerfestigkeit 80 000 ± 5%
Zyklen Martindale
(EN ISO 12947)
- Fusselbildung 5
(EN ISO 12945)
- Lichtechtheit 6
(EN ISO 105-B02)
- Attest über schwere
Entflammbarkeit
EN 1021-1
EN 1021-2
Crib 5
BS 7176 Medium Hazard
C1
M1
B1
IMO A 652(16)
IMO A 471 (XII)

- GB** – 100% Polyester
- Trevira CS
- weight 260 ± 5% g/m²
- abrasion 80 000 ± 5%
cycles Martindale
(EN ISO 12947)
- resistance 5
(EN ISO 12945)
- light fastness 6
(EN ISO 105-B02)
- non-flammability
certificate
EN 1021-1
EN 1021-2
Crib 5
BS 7176 Medium Hazard
C1
M1
B1
IMO A 652(16)
IMO A 471 (XII)

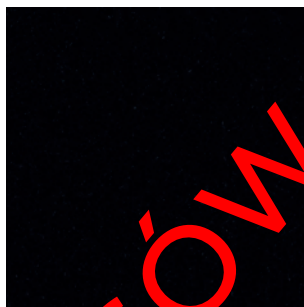
- PL** – poliester 100% – Trevira CS
- waga 260 ± 5% g/m²
- odporność na ścieranie
80 000 ± 5%
cykli Martindale
(EN ISO 12947)
- odporność na pilling 5
(EN ISO 12945)
- odporność na światło 6
(EN ISO 105-B02)
- atest trudnozapałności
EN 1021-1
EN 1021-2
Crib 5
BS 7176 Medium Hazard
C1
M1
B1
IMO A 652(16)
IMO A 471 (XII)



LN 010



LN 004



LN 009



LN 008



LN 002



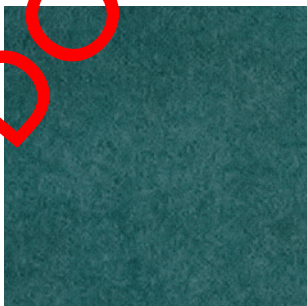
LN 003



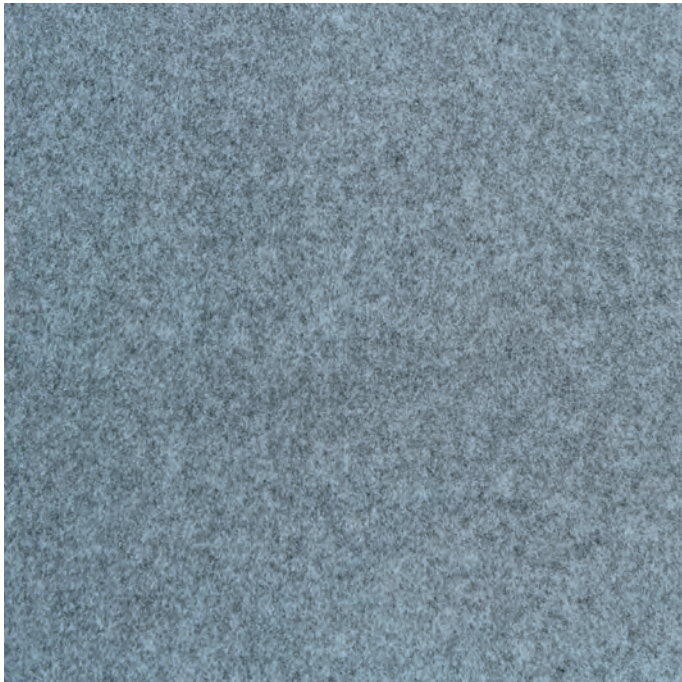
LN 001



LN 006



LN 007



LN 005

DO WYCZERPANIA ZAPASÓW



- D** - Oberfläche: 100% PA - Poliamid
Gewebe: Polyester 65%, Baumwolle 35%
- Rollenbreite: 140 cm
 - Gewicht 270 g/m² (min. 265g/m²)
 - Scheuerfestigkeit 500 000 +/- 10% Zyklen Martindale (EN ISO 12947-2)
 - Fusselbildung 5 (EN ISO 12945-2)
 - Lichtbeständigkeit 5 (EN ISO 105 - B02)
 - Attestüber schwere EN 1021: 2014 -1

- GB** - surface: 100% PA - poliamide
basic material: polyester 65%, cotton 35%
- roll width: 140 cm
 - weight 270 g/m² (min. 265 g/m²)
 - abrasion 500 000 cycles +/- 10% Martindale (EN ISO 12947-2)
 - resistance to pilling 5 (EN ISO 12945-2)
 - light fastness 5 (EN ISO 105 - B02)
 - non-flammability certificate EN 1021: 2014 -1

- PL** - powłoka: 100% PA - poliamid
nośnik: poliester 65%, bawełna 35%
- szer. rolki: 140 cm
 - waga 270 g/m² (min. 265 g/m²)
 - odporność na ścieranie 500 000 +/- 10% cykli Martindale (EN ISO 12947-2)
 - odporność na pilling 5 (EN ISO 12945-2)
 - odporność na światło 5 (EN ISO 105 - B02)
 - atest trudnozapałności EN 1021: 2014 -1

* according to cleaning specification

Vorgestellte Farbgebung ist kein Angebot im Sinne der Rechtsvorschriften
The colours presented do not constitute an offer within the meaning of the law
Przedstawiona kolorystyka nie stanowi oferty w rozumieniu prawa

**LANA**

TEXTILES bring **COLOUR**
 100% LANEVE™ wool

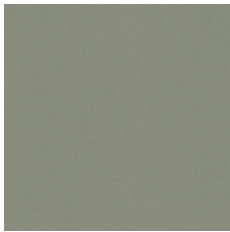
BLAZER



CUZ39



CUZ90



CUZ14



CUZ31



CUZ18



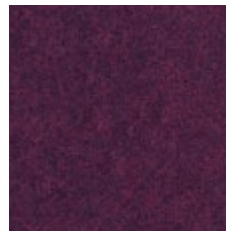
CUZ63



CUZ1L



CUZ1K



CUZ32



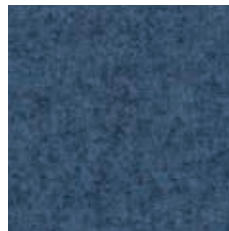
CUZ27



CUZ02



CUZ1R



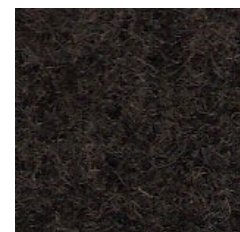
CUZ1W



CUZ62



CUZ09



CUZ67



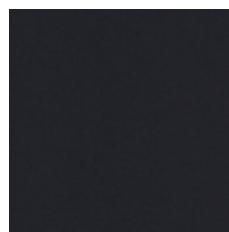
CUZ12



CUZ28



CUZ30



CUZ08



CUZ1E

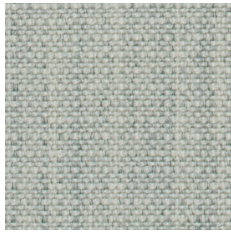
Blazer is made from 100% LANEVE™ wool, sustainably produced and traceable right back to individual farms Banks Peninsula Growers on South Island, New Zealand. Laneve promises wool integrity and complete chain of custody from identifiable farm to finished

- D**
- Schurwolle 100%
 - Gewicht 460 g/m² +/-5%
 - Rollenbreite: 140 cm
 - Scheuerfestigkeit 50 000 Zyklen Martindale
 - Fusselbildung >4
BS: EN ISO 12945-2 (2000)
 - Lichtechtheit 5
(ISO 105-B02: 2014)
 - Attest über schwere Entflammbarkeit
BS EN 1021 - 1:2014
BS EN 1021 - 2:2014
BS7176:2007 Low Hazard

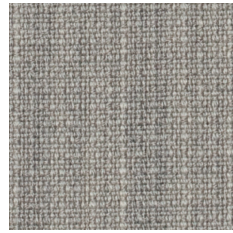
- GB**
- 100% virgin wool
 - weight 460 g/m² +/-5%
 - roll width: 140 cm
 - abrasion 50 000 cycles Martindale
 - resistance to pilling >4
BS: EN ISO 12945-2 (2000)
 - Light fastness 5
(ISO 105-B02: 2014)
 - non-flammability certificate
BS EN 1021 - 1:2014
BS EN 1021 - 2:2014
BS7176:2007 Low Hazard

- PL**
- wełna 100%
 - waga 460 g/m² +/-5%
 - szer. rolki: 140 cm
 - odporność na ścieranie 50 000 cykli Martindale
 - odporność na pilling >4
BS: EN ISO 12945-2 (2000)
 - odporność na światło 5
(ISO 105-B02: 2014)
 - atest trudnozapałności
BS EN 1021 - 1:2014
BS EN 1021 - 2:2014
BS7176:2007 Low Hazard

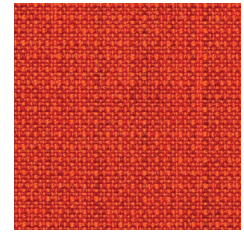




CS 031



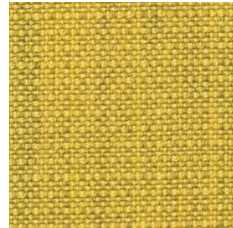
CS 033



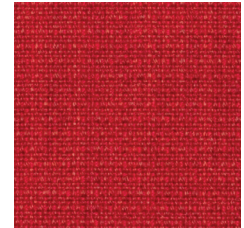
CS 430



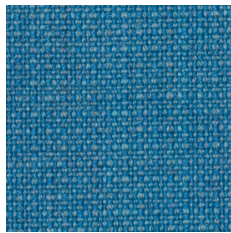
CS 032



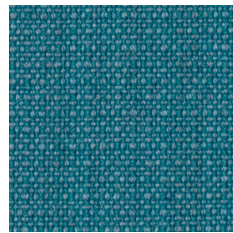
CS 202



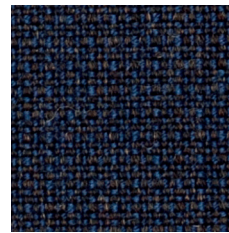
CS 432



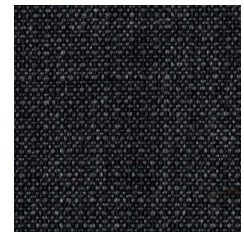
CS 601



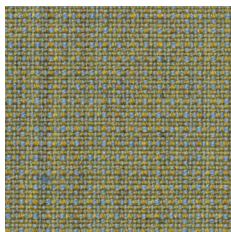
CS 602



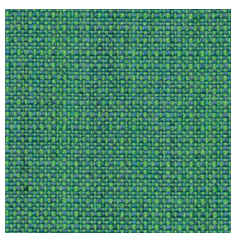
CS 125



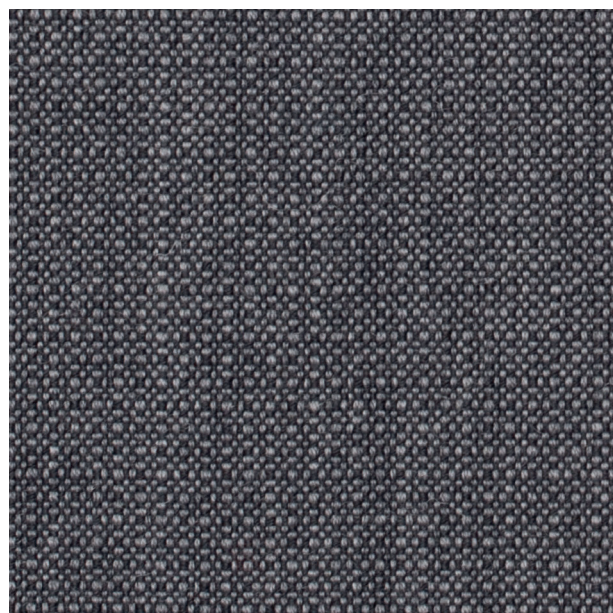
CS 013



CS 201



CS 605



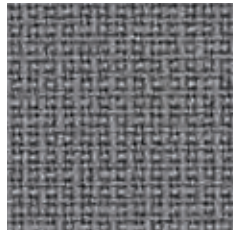
CS 022

- D**
- 93% Schurwolle, 7% poliamid
 - Gewicht 328 g/m²
 - Rollenbreite: 140 cm
 - Scheuerfestigkeit 200 000 Zyklen Martindale (EN ISO 12947-2)
 - Fusselbildung 4-5 (EN ISO 12945-2)
 - Lichtbeständigkeit 5-7 (EN ISO 105 - B02)
 - Abrieffestigkeit 4-5 (EN ISO 105 x 12 (nass/trocken))
 - Entzündlichkeit EN 1021 1&2, BS 5852 0&1, Calif. Bull. 117-E Klasse 1, IMO MS c 307(88) Annex 1 Parte 8, Zertifikat MED IMO

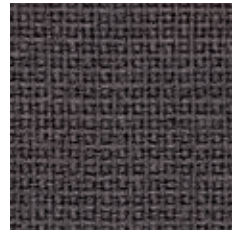
- GB**
- 93% wool, 7% polyamid
 - weight 328 g/m²
 - roll width: 140 cm
 - abrasion 200 000 cycles Martindale (EN ISO 12947-2)
 - resistance to pilling 4-5 (EN ISO 12945-2)
 - light fastness 5-7 (EN ISO 105 - B02)
 - rubbing fastness 4-5 (EN ISO 105 x 12 (wet/dry))
 - non-flammability certificate: EN 1021 1&2, BS 5852 0&1, Calif. Bull. 117-E class 1, IMO MS c 307(88) Annex 1 part 8, MED certificate IMO

- PL**
- 93% wełna, 7% poliamid
 - waga 328 g/m²
 - szer. rolki: 140 cm
 - odporność na ścieranie 200 000 cykli Martindale (EN ISO 12947-2)
 - odporność na pilling 4-5 (EN ISO 12945-2)
 - odporność na światło 5-7 (EN ISO 105 - B02)
 - odporność na ścieranie 4-5 (EN ISO 105 x 12 (mokry/suchy))
 - atest trudnozapałności EN 1021 1&2, BS 5852 0&1, Calif. Bull. 117-E klasa 1, IMO MS c 307(88) aneks 1 część 8, certyfikat MED IMO





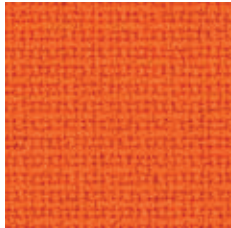
F 0078



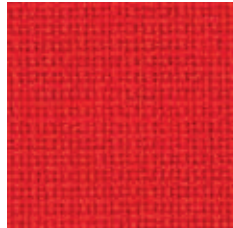
F 0019



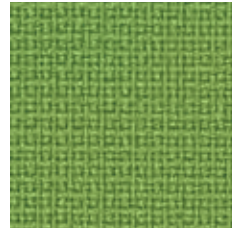
F 0099



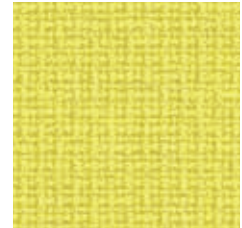
F 3016



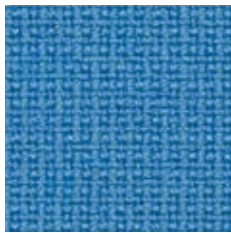
F 4119



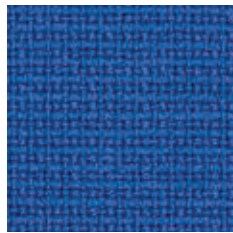
F 8035



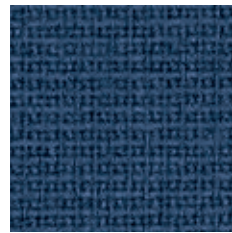
F 2067



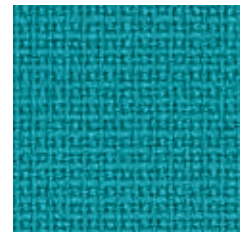
F 6118



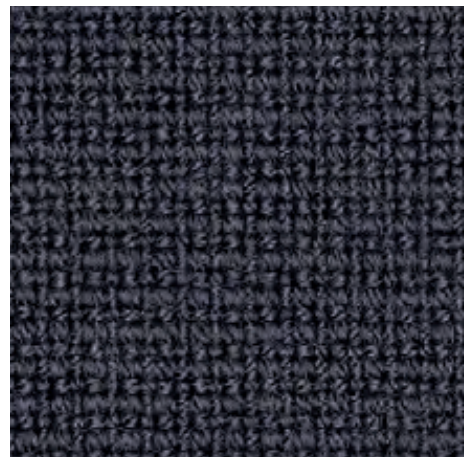
F 6075



F 6071



F 7016



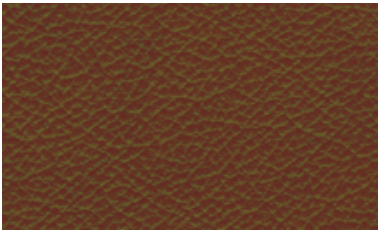
F 0017

- D**
- 95% Schurwolle, 5% Polyamid
 - Gewicht 450 g/m²
 - Rollenbreite: 140 cm
 - Scheuerfestigkeit 200 000 Zyklen Martindale
 - Fusselbildung 4 (EN ISO 12945-2)
 - Lichtbeständigkeit 5-7 (EN ISO 105 - B02)
 - Abrieffestigkeit 4-5 (EN ISO 105 x 12 (nass/trocken))
 - Entzündlichkeit EN 1021 P 1&2 (Zigaretten, Streichholztest) BS 5852 (Crib 5) BS 5852 O&1 UNI 9175 Klasse 1 IM Calif. Bull. 117-E Klasse 1
 - Reinigung - Trockenreinigung

- GB**
- 95% wool, 5% polyamide
 - weight 450 g/m²
 - roll width: 140 cm
 - abrasion 200 000 cycles Martindale (EN ISO 12947-2)
 - resistance to pilling 4 (EN ISO 12945-2)
 - light fastness 5-7 (EN ISO 105 - B02)
 - rubbing fastness 4-5 (EN ISO 105 x 12 (wet/dry))
 - non-flammability certificate: EN 1021 P 1&2 (cigarette, match) BS 5852 (Crib 5) BS 5852 O&1 UNI 9175 class 1 IM Calif. Bull. 117-E class 1
 - cleaning - dry cleaning

- PL**
- 95% wełna, 5% poliamid
 - waga 450 g/m²
 - szer. rolki: 140 cm
 - odporność na ścieranie 200 000 cykli Martindale (EN ISO 12947-2)
 - odporność na pilling 4 (EN ISO 12945-2)
 - odporność na światło 5-7 (EN ISO 105 - B02)
 - odporność na ścieranie 4-5 (EN ISO 105 x 12 (mokry/suchy))
 - atest trudnozapałności EN 1021 P 1&2 (papieros, zapalnik) BS 5852 (Crib 5) BS 5852 O&1 UNI 9175 class 1 IM Calif. Bull. 117-E class 1
 - czyszczenie - na sucho





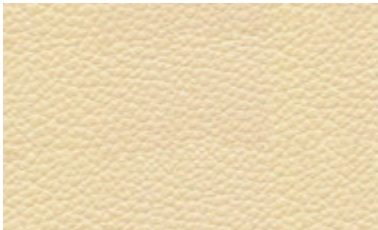
B-478



S-100



S-154



S-336



C-181



B-5458



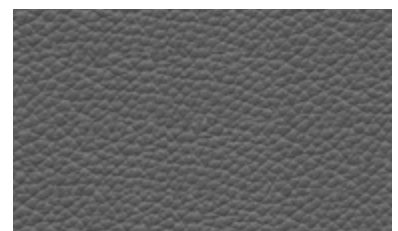
S-233



black



S-white



antracyt

- D**
- Groesse Ca. 4,2 m
 - Dicke >0,9 mm – 1,1 mm
 - Reibungstest nass >250
BS EN ISO 11640: 1998
 - Reibungstest trocken >500
(EN ISO 11640:1998)
 - Flexometry > 50 000 Zyklen
BS EN ISO 5402:2002
 - PCP und CFC bei Gerben wurden nicht verwendet
 - Es koennen kleine Unterschiede in der Faerbung hervortreten
 - Zigaretten- und Streichholztest
1021-1:2006
1021-2:2006

- GB**
- size Ca. 4,2 sqm
 - thickness >0,9 mm – 1,1 mm
 - wet rub tests >250
BS EN ISO 11640: 1998
 - dry rub tests >500
(EN ISO 11640:1998)
 - flexometry > 50 000 cycles
BS EN ISO 5402:2002
 - no PCP or CFC used during tanning process
 - natural colour variations may occur
 - non-flammability certificate
1021-1:2006
1021-2:2006

- PL**
- wielkość błamu około 4,2 m
 - grubość >0,9 mm – 1,1 mm
 - test tarcia na mokro >250₂
BS EN ISO 11640: 1998
 - test tarcia na sucho >500
(EN ISO 11640:1998)
 - zginanie > 50 000 cykli
BS EN ISO 5402:2002
 - nie stosowano PCP i CFC podczas procesu garbowania
 - mogą występować niewielkie różnice w odcieniu i strukturze
 - atest trudnozapałności
1021-1:2006
1021-2:2006

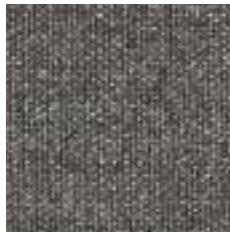
Vorgestellte Farbgebung ist kein Angebot im Sinne der Rechtsvorschriften
The colours presented do not constitute an offer within the meaning of the law
Przedstawiona kolorystyka nie stanowi oferty w rozumieniu prawa

LEDER / LEATHER / SKÓRA

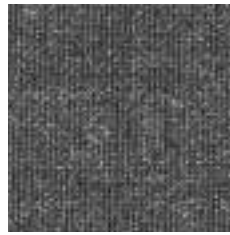




RX 912



RX 163



RX 173



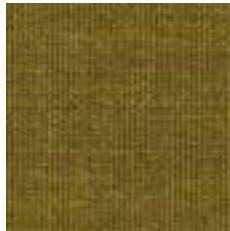
RX 393



RX 733



RX 123



RX 412



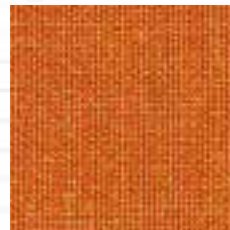
RX 753



RX 762



RX 643



RX 543



RX 433



RX 942



- D**
- **Anwendungsbereich:** Büros, Hotels, Objectbereich, privaten Wohnbereich. Hohe Strapazierfähigkeit
 - **Zusammensetzung:** 90% Schurwolle, 10% nylon (Wolle mit erhöhter Widerstandsfähigkeit)
 - **Gewicht:** Ungefähr 415 g/lin.m
Reinigung: Staubsaugen und Reinigung
 - **Scheuerfähigkeit:** Ungefähr 100.000 Martindale rubs, EN ISO 12947
 - **Fusselbildung:** Note 3-4, EN ISO 12945
 - **Lichtechtheit:** Note 5-7, ISO 105-B02
 - **Flammwidrigkeit:** EN 1021-1/2. BS 5852 Zündquelle 2-3. ÖNORM B1/Q1. NF D 60 013. UNI 9175 11M. US Cal. Tech. Bull. 117. AS/NZS 3837 Klasse 2. Sec. E, IMO A.652(16).(Crib 5 und B2 (bei schwerentflammbare Ausrüstung))

- GB**
- **Application:** Offices, hotels, institutions, domestic use. Great durability.
 - **Composition:** 90% new wool, worsted; 10% nylon
 - **Weight:** Approximately 415 g/lin.m
 - **Cleaning:** Vacuuming and dry cleaning
 - **Abrasion:** Approximately 100.000 Martindale rubs, EN ISO 12947
 - **Pilling:** Note 3-4, EN ISO 12945
 - **Lightfastness:** Note 5-7, ISO 105-B02
 - **Flame resistance:** EN 1021-1/2. BS 5852 ignition source 2-3. ÖNORM B1/Q1. NF D 60 013. UNI 9175 11M. US Cal. Tech. Bull. 117. AS/NZS 3837 class 2. Sec. E, IMO A.652(16).(Crib 5 and B2 (when flame protected))

- PL**
- **Zastosowanie:** Biura, hotele, instytucje, domy/mieszkania. Wysoka trwałość.
 - **Skład:** 90% wełna, 10% nylon (Wełna o podwyższonej wytrzymałości)
 - **Waga:** ok. 415 g/m²
 - **Czyszczenie:** odkurzanie i czyszczenie chemiczne
 - **Odporność na ścieranie:** 100.000 Martindale rubs, EN ISO 12947
 - **Odporność na pilling:** Note 3-4, EN ISO 12945
 - **Odporność na światło:** Note 5-7, ISO 105-B02
 - **Atest trudnopalności:** EN 1021-1/2. BS 5852 źródło zapłonu 2-3. ÖNORM B1/Q1. NF D 60 013. UNI 9175 11M. US Cal. Tech. Bull. 117. AS/NZS 3837 klasa 2. Sec. E, IMO A.652(16).(Crib 5 i B2 (po uniepalnieniu))



Vorgestellte Farbgebung ist kein Angebot im Sinne der Rechtsvorschriften
The colours presented do not constitute an offer within the meaning of the law
Przedstawiona kolorystyka nie stanowi oferty w rozumieniu prawa

edycja: 09.2014





D-1



D-3



D-8



D-10



D-15

LAMINAT / LAMINATE / LAMINAT



Weiß / white /
biały



Anthrazit / anthracite /
antracyt



Schwarz / black /
czarny

CPL



Ahorn / maple /
klon



Nuss / walnut /
orzech

natürliche Furnier / natural veneer /
okleina naturalna

METAL / METAL / METAL



1023



3020



5018



6018



9016



7024



9005



ALU



CHROM