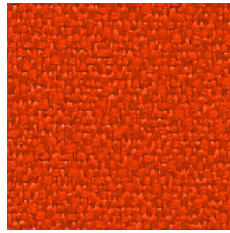
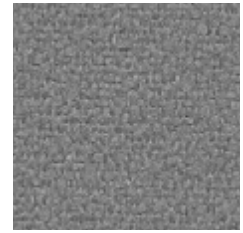


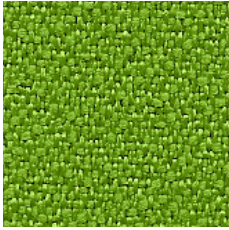
BD 005



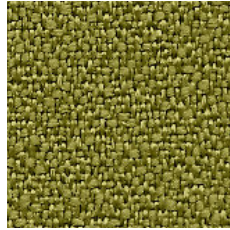
BD 012



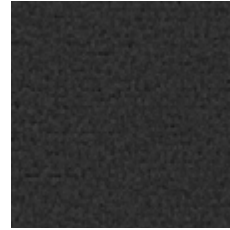
BD 078



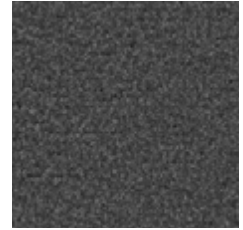
BD 048



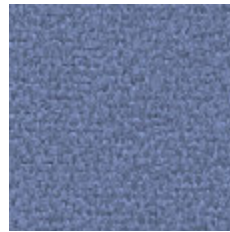
BD 021



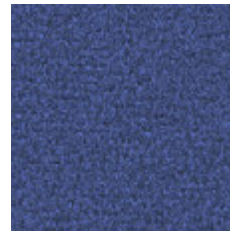
BD 033



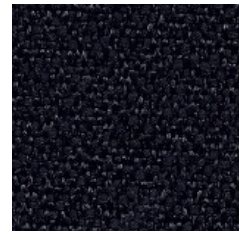
BD 023



BD 003



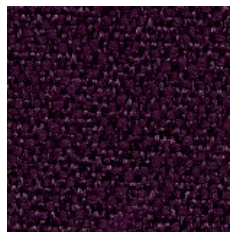
BD 071



BD 006



BD 011



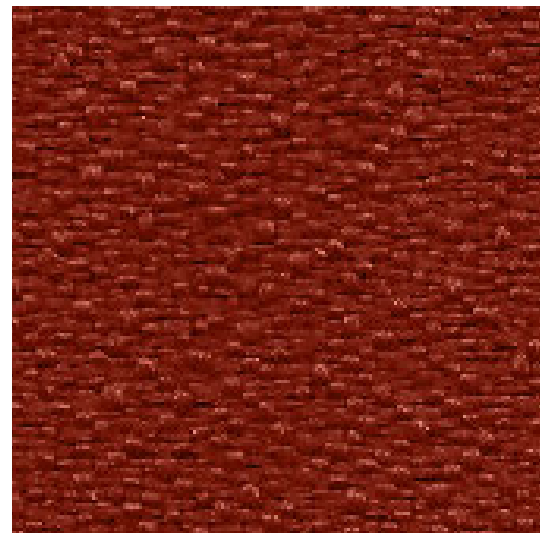
BD 004



BD 008



BD 036



BD 013

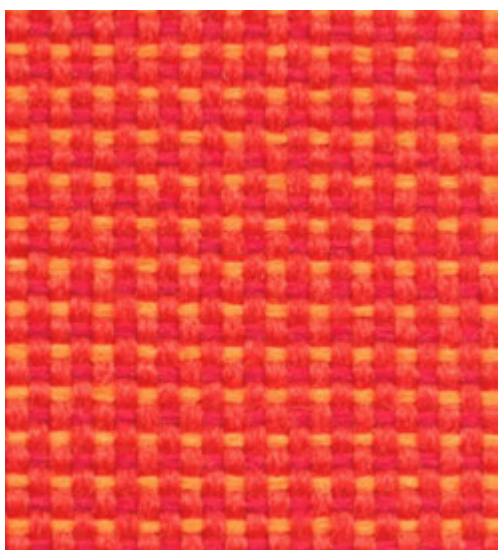
- D** – 100% Polyester
- Gewicht 250 g/m² +/- 5%
- Scheuerfestigkeit 100 000 +/- 10% Zyklen Martindale (EN ISO 12947-2)
- Fusselbildung 5 (EN ISO 12945-2)
- Lichtechtheit 6 (EN ISO 105-B02)
- Attest über schwere Entflammbarkeit (BS EN 1021-1) (BS EN 1021-2)
- CRIB 5
- BS 7176 Medium Hazard
- 1JM (UNI 9175)

- GB** – 100% polyester
- weight 250 g/m² +/- 5%
- abrasion 100 000 +/- 10% cycles Martindale (EN ISO 12947-2)
- resistance to pilling 5 (EN ISO 12945-2)
- light fastness 6 (EN ISO 105-B02)
- non-flammability certificate (BS EN 1021-1) (BS EN 1021-2)
- CRIB 5
- BS 7176 Medium Hazard
- 1JM (UNI 9175)

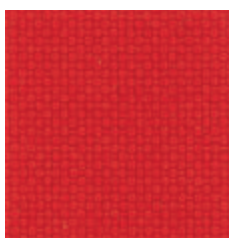
- PL** – poliester 100%
- waga 250 g/m² +/- 5%
- odporność na ścieranie 100 000 +/- 10% cykli Martindale (EN ISO 12947-2)
- odporność na pilling 5 (EN ISO 12945-2)
- odporność na światło 6 (EN ISO 105-B02)
- atest trudnozapałności (BS EN 1021-1) (BS EN 1021-2)
- CRIB 5
- BS 7176 Medium Hazard
- 1JM (UNI 9175)

trevira CS

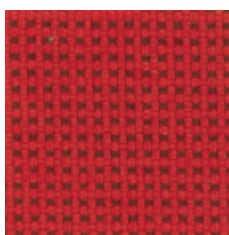
PASTEL 



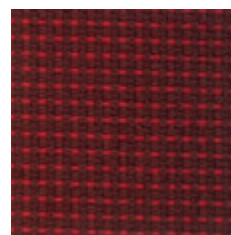
PA 515



PA 010



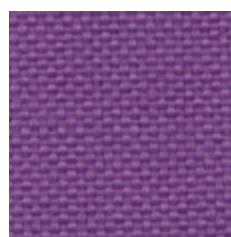
PA 510



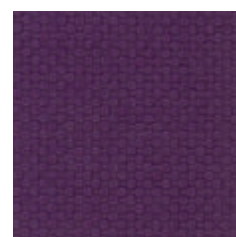
PA 511



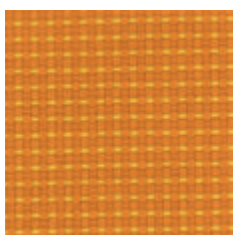
PA 015



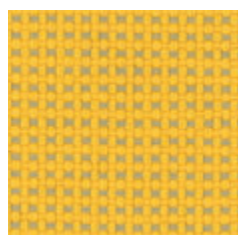
PA 025



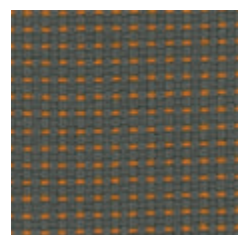
PA 020



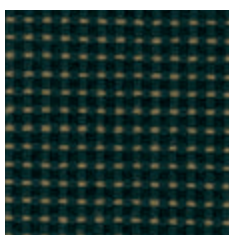
PA 516



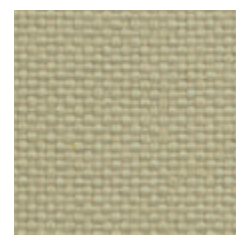
PA 517



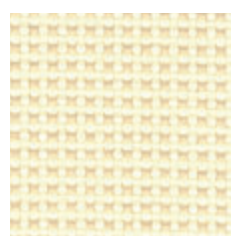
PA 531



PA 533



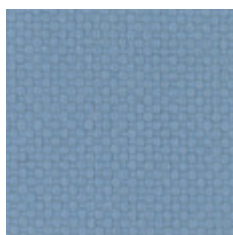
PA 030



PA 534



PA 532



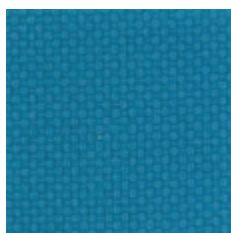
PA 045



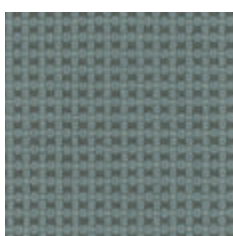
PA 541



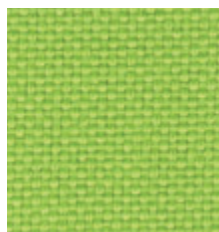
PA 040



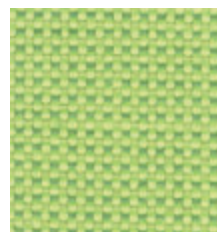
PA 050



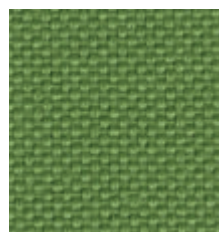
PA 555



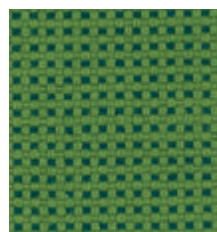
PA 060



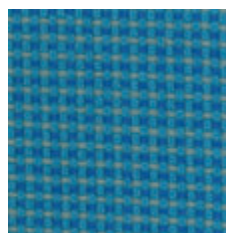
PA 560



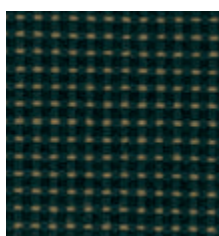
PA 065



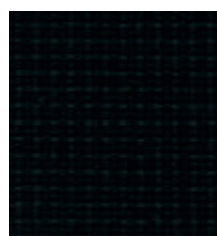
PA 565



PA 550



PA 571



PA 570

- D** – 100% Polyestere
- Trevira CS
- Gewicht 260 ± 5% g/m²
- Scheuerfestigkeit 80 000 ± 5%
Zyklen Martindale
(EN ISO 12947)
- Fusselbildung 5
(EN ISO 12945)
- Lichtechtheit 6
(EN ISO 105-B02)
- Attest über schwere
Entflammbarkeit
EN 1021-1
EN 1021-2
Crib 5
BS 7176 Medium Hazard
C1
M1
B1
IMO A 652(16)
IMO A 471 (XII)

- GB** – 100% Polyester
- Trevira CS
- weight 260 ± 5% g/m²
- abrasion 80 000 ± 5%
cycles Martindale
(EN ISO 12947)
- resistance 5
(EN ISO 12945)
- light fastness 6
(EN ISO 105-B02)
- non-flammability
certificate
EN 1021-1
EN 1021-2
Crib 5
BS 7176 Medium Hazard
C1
M1
B1
IMO A 652(16)
IMO A 471 (XII)

- PL** – poliester 100% – Trevira CS
- waga 260 ± 5% g/m²
- odporność na ścieranie
80 000 ± 5%
cykli Martindale
(EN ISO 12947)
- odporność na pilling 5
(EN ISO 12945)
- odporność na światło 6
(EN ISO 105-B02)
- atest trudnozapałności
EN 1021-1
EN 1021-2
Crib 5
BS 7176 Medium Hazard
C1
M1
B1
IMO A 652(16)
IMO A 471 (XII)

Era - Product information

ERA is a subtle, two tone polyester fabric containing stretch in both directions for ease of upholstery. The baby herringbone weave offers an understated contemporary texture while its colouring technique provides close up intrigue. The palette incorporates playful brights and sophisticated muted tones.

Contact	
UK Head Office:	+44 (0)1924 490491
Belgium/France:	+32 56 227 266
Germany:	+49 7031 60 84 30
Netherlands:	+31 7361 25120
Scandinavia:	+45 32 55 20 01
USA:	+1 616 288 0655
China:	+86 (0) 21 6133 1812

www.camirafabrics.com



Technical information

UK

Composition

100% Polyester
Non metallic dyestuffs

Width

140cm minimum

Weight

320g/m² ±5% (488g/lin.m ±5%)

Abrasion Resistance

5 year guarantee / 100,000 Martindale cycles (full details available)

Flammability

BS EN 1021 - 1:2014 (cigarette)
BS EN 1021 - 2:2014 (match)
BS 7176:2007 Low Hazard

Note: Flammability performance is dependent on foam used.

Light Fastness

5 (ISO 105 - B02:2014)

Fastness to Rubbing

Wet: 4, Dry: 4 (ISO 105 - X12:2002)

Cleaning

Vacuum regularly. Professionally dry clean or wipe clean with a damp cloth.

Please note that seam performance is dependent on seam construction and needle and thread type. We recommend that appropriate sewing advice be taken.

Please note that seam performance is dependent on seam construction and needle and thread type. We recommend that appropriate sewing advice be taken.

Note: Batch to batch variations in shade may occur within commercial tolerances. We reserve the right to alter technical specifications without notice. The Unregistered Design Rights and the Copyright in all designs are the exclusive property of Camira Fabrics Limited.

D

Zusammensetzung

100% Polyester.
Nicht schwermetallhaltige Farbstoffe.

Breite

140cm nutzbare Breite

Gewicht

320g/m² ±5% (488g/lfd.M ±5%)

Scheuerfestigkeit

5 Jahre Garantie / 100,000 Martindale Scheuertouren (Details auf Anfrage)

Feuersicherung

BS EN 1021 - 1:2014 (Zigarettentest)
BS EN 1021 - 2:2014 (Streichholztest)
BS 7176:2007 Low Hazard

Bemerkung: Schwerentflammbarkeit hängt von verwendetem Schaum ab.

Lichtechtheit

5 (ISO 105 - B02:2014)

Reibechtheit

Nass: 4, Trocken: 4 (ISO 105 - X12:2002)

Reinigung

Regelmässig absaugen. Professionelle Trockenreinigung. Alternativ dazu mit einem feuchten Tuch abwischen.

Eine optimale Nahtausreissfestigkeit hängt von der Nahtfahne, der verwendeten Nadel und dem Näh-Garn ab. Wir empfehlen daher Nähversuche durchzuführen.

Eine optimale Nahtausreissfestigkeit hängt von der Nahtfahne, der verwendeten Nadel und dem Näh-Garn ab. Wir empfehlen daher Nähversuche durchzuführen.

Wichtig: Handelsübliche Farbabweichungen können auftreten und berechtigen nicht zur Reklamation. Wir behalten uns die Änderung technischer Spezifikationen vor. Die registrierten und nicht registrierten Urheberrechte der Dessinierungen sind ausschliessliches Eigentum der Camira Fabrics Limited.

F

Composition

100% Polyester.
Teintures non métalliques

Largeur

140cm minimum

Poids

320g/m² ±5% (488g/m.l ±5%)

Résistance à l'abrasion

Garantie de 5 ans / 100,000 Martindale tours (renseignements complémentaires disponibles)

Flammabilité

BS EN 1021 - 1:2014 (cigarette)
BS EN 1021 - 2:2014 (allumette)
BS 7176:2007 Low Hazard

Notez: Réaction au feu dépend de la mousse utilisée.

Solidité à la lumière

5 (ISO 105 - B02:2014)

Solidité au Frottement

Mouillé: 4, Sec: 4 (ISO 105 - X12:2002)

Nettoyage

Aspirer régulièrement. Nettoyage à sec professionnel. Autrement, essuyer avec un tissu humide.

Veillez noter que la performance du joint dépend de sa construction ainsi que de l'aiguille et du type de fil utilisés.

Veillez noter que la performance du joint dépend de sa construction ainsi que de l'aiguille et du type de fil utilisés.

Remarque: une variation de couleurs peut provenir (commerciallement tolérable). Nous réservons le droit de changer les spécifications techniques sans préavis. Les Droits de Conception non-enregistrés et les droits d'auteur de tous les motifs sont la propriété exclusives de Camira Fabrics Limited.

ES

Composición

100% Poliéster.
Tintes no metálicos

Ancho

140cm mínimo

Peso

320g/m² ±5% (488g/lin.m ±5%)

Resistencia a la abrasión

Garantía de uso 5 años / 100,000 Martindale ciclos (más información disponible bajo consulta)

Inflamabilidad

BS EN 1021 - 1:2014(cigarillo)
BS EN 1021 - 2:2014(cerilla)
BS 7176:2007 Low Hazard

Condiciones ignifugas dependientes del tipo de foam utilizado

Solidez a la luz

5 (ISO 105 - B02:2014)

Solidez al rozamiento

Húmedo: 4, Seco: 4 (ISO 105 - X12:2002)

Limpieza

Limpiar con aspirador con regularidad. Limpiar en seco, o bien lavar con un paño húmedo.

Tenga en cuenta que el rendimiento de la costura depende de la construcción de la costura, además de la aguja y del tipo de rosca. Le recomendamos que se aconsejen para coser la costura.

Tenga en cuenta que el rendimiento de la costura depende de la construcción de la costura, además de la aguja y del tipo de rosca. Le recomendamos que se aconsejen para coser la costura.

Nota: las variaciones de lote a lote en la sombra se puede producir dentro de tolerancias comerciales. Nos reservamos el derecho a efectuar modificaciones técnicas sin previo aviso. Los derechos sobre los diseños no registrados y los derechos de autor en todos los diseños son propiedad exclusiva de Camira Fabrics Limited.

camira

style with substance

www.camirafabrics.com

Era



Task seating



Soft seating



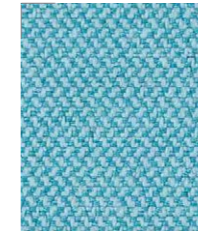
Cigarette & Match



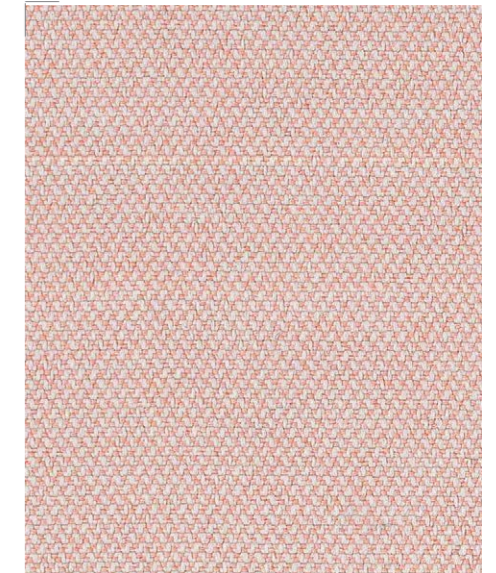
Year guarantee



Futurist
CSE01



Aeon
CSE20



Calendar
CSE19



Generation
CSE02



Lifetime
CSE03



Period
CSE07



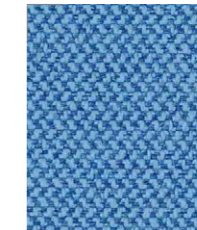
Cycle
CSE06



Span
CSE05



Timelapse
CSE16



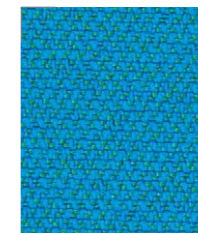
Chapter
CSE08



Forecast
CSE11



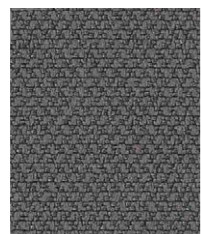
Phase
CSE17



Everlasting
CSE10



Present
CSE13



History
CSE21



Prime
CSE09



Event
CSE18



Stage
CSE15



Perennial
CSE12



Forward
CSE14

TEXTILES bring **COLOUR**
100% LANEVE™ wool

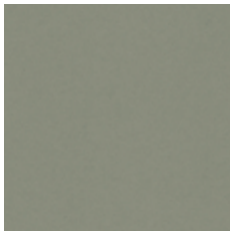
BLAZER



CUZ39



CUZ90



CUZ14



CUZ31



CUZ18



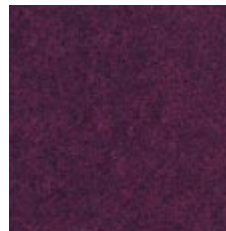
CUZ63



CUZ1L



CUZ1K



CUZ32



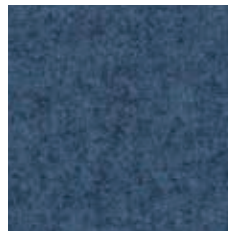
CUZ27



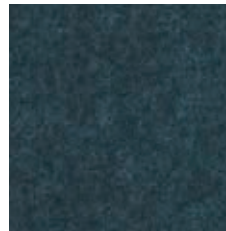
CUZ02



CUZ1R



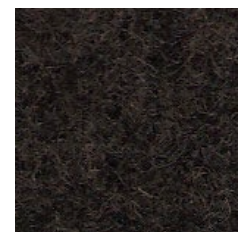
CUZ1W



CUZ62



CUZ09



CUZ67



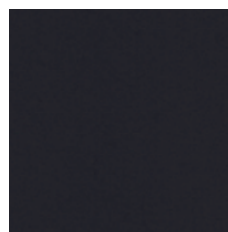
CUZ12



CUZ28



CUZ30



CUZ08



CUZ1E

Blazer is made from 100% LANEVE™ wool, sustainably produced and traceable right back to individual farms Banks Peninsula Growers on South Island, New Zealand. Laneve promises wool integrity and complete chain of custody from identifiable farm to finished

- D**
- Schurwolle 100%
 - Gewicht 460 g/m² +/-5%
 - Rollenbreite: 140 cm
 - Scheuerfestigkeit 50 000 Zyklen Martindale
 - Fusselbildung >4
BS: EN ISO 12945-2 (2000)
 - Lichtechtheit 5
(ISO 105-B02: 2014)
 - Attest über schwere Entflammbarkeit
BS EN 1021 - 1:2014
BS EN 1021 - 2:2014
BS7176:2007 Low Hazard

- GB**
- 100% virgin wool
 - weight 460 g/m² +/-5%
 - roll width: 140 cm
 - abrasion 50 000 cycles Martindale
 - resistance to pilling >4
BS: EN ISO 12945-2 (2000)
 - Light fastness 5
(ISO 105-B02: 2014)
 - non-flammability certificate
BS EN 1021 - 1:2014
BS EN 1021 - 2:2014
BS7176:2007 Low Hazard

- PL**
- wełna 100%
 - waga 460 g/m² +/-5%
 - szer. rolki: 140 cm
 - odporność na ścieranie 50 000 cykli Martindale
 - odporność na pilling >4
BS: EN ISO 12945-2 (2000)
 - odporność na światło 5
(ISO 105-B02: 2014)
 - atest trudnozapałności
BS EN 1021 - 1:2014
BS EN 1021 - 2:2014
BS7176:2007 Low Hazard



Synergy - Product information

2+2 = 75. Where the total is more than the sum of the parts. Say hello to Synergy, a soft handle wool blend fabric, featuring exquisite fibre dyed shades and sumptuous piece dyed solids. It all comes together to provide our largest colour offering of 75 intelligent shades.

We have partnered with Just A Drop, the international water aid charity, and for every metre of fabric we sell, we will make a donation to a specific project around the world, helping to provide clean and safe water to those in need.



Technical information

UK

Composition
95% Virgin Wool, 5% Polyamide.
Non metallic dyestuffs

Width
140cm minimum

Weight
400g/m² ±5% (560g/lin.m ±5%)

Abrasion Resistance
5 year guarantee / 100,000 Martindale cycles (full details available)

Flammability

BS EN 1021 - 1:2014 (cigarette)
BS EN 1021 - 2:2014 (match)
BS 7176:2007 Low Hazard
UNI 9175 Class 1M

Optional: Please specify when ordering:
BS 5852:2006 Section 4 Ignition Source 5 when FR treated
BS 7176:2007 Medium Hazard when FR treated
Note: Flammability performance is dependent on foam used.

Light Fastness

5 (ISO 105 - B02:2014)

Fastness to Rubbing

Wet: 4, Dry: 4 (ISO 105 - X12:2002)

Cleaning

Vacuum regularly. Professionally dry clean or wipe clean with a damp cloth.

Please note that seam performance is dependent on seam construction and needle and thread type. We recommend that appropriate sewing advice be taken.

Note: Batch to batch variations in shade may occur within commercial tolerances. We reserve the right to alter technical specifications without notice. The Unregistered Design Rights and the Copyright in all designs are the exclusive property of Camira Fabrics Limited.

D

Zusammensetzung
95% Schurwolle, 5% Polyamid.
Nicht schwermetallhaltige Farbstoffe

Breite
140cm nutzbare Breite

Gewicht
400g/m² ±5% (560g/dfd.M ±5%)

Scheuerfestigkeit
5 Jahre Garantie / 100,000 Martindale Scheuertouren (Details auf Anfrage)

Feuersicherung

BS EN 1021 - 1:2014 (Zigarettentest)
BS EN 1021 - 2:2014 (Streichholztest)
BS 7176:2007 Low Hazard
UNI 9175 Class 1M

Bitte bei Auftragserteilung angeben:
BS 5852:2006 Section 4 Ignition Source 5 wenn mit FR ausgerüstet
BS 7176:2007 Medium Hazard wenn mit FR ausgerüstet
Bemerkung: Schwerentflammbarkeit hängt von verwendetem Schaum ab.

Lichtechtheit

5 (ISO 105 - B02:2014)

Reibechtheit

Nass: 4, Trocken: 4 (ISO 105 - X12:2002)

Reinigung

Regelmässig absaugen. Professionelle Trockenreinigung. Alternativ dazu mit einem feuchten Tuch abwischen.

Eine optimale Nahtausrüstbarkeit hängt von der Nähfahne, der verwendeten Nadel und dem Näh-Garn ab. Wir empfehlen daher Nähversuche durchzuführen.

Wichtig: Handelsübliche Farbabweichungen können auftreten und berechtigen nicht zur Reklamation. Wir behalten uns die Änderung technischer Spezifikationen vor. Die registrierten und nicht registrierten Urheberrechte der Dessinierungen sind ausschliessliches Eigentum der Camira Fabrics Limited.

F

Composition
95% Laine Vierge, 5% Polyamid.
Teintures non métalliques

Largeur
140cm minimum

Poids
400g/m² ±5% (560g/m.l ±5%)

Résistance à l'abrasion
Garantie de 5 ans / 100,000 Martindale tours (renseignements complémentaires disponibles)

Flammabilité

BS EN 1021 - 1:2014 (cigarette)
BS EN 1021 - 2:2014 (allumette)
BS 7176:2007 Low Hazard
UNI 9175 Class 1M

Prière de le mentionner lors de la commande:
BS 5852:2006 Section 4 Ignition Source 5 si traitement FR
BS 7176:2007 Medium Hazard si traitement FR
Notez: Réaction au feu dépend de la mousse utilisée.

Solidité à la lumière

5 (ISO 105 - B02:2014)

Solidité au Frottement

Mouillé: 4, Sec: 4 (ISO 105 - X12:2002)

Nettoyage

Aspirer régulièrement. Nettoyage à sec professionnel. Autrement, essuyer avec un tissu humide.

Veuillez noter que la performance du joint dépend de sa construction ainsi que de l'aiguille et du type de fil utilisés.

Remarque: une variation de couleurs peut provenir (commerciallement tolérable). Nous réservons le droit de changer les spécifications techniques sans préavis. Les Droits de Conception non-enregistrés et les droits d'auteur de tous les motifs sont la propriété exclusives de Camira Fabrics Limited.

www.camirafabrics.com



camira

style with substance

www.camirafabrics.com

Synergy



Task seating



Soft seating

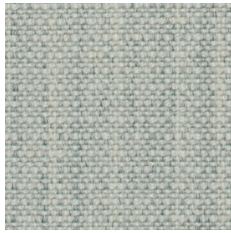


Cigarette & Match



Year guarantee

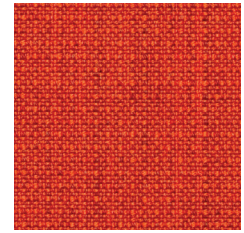




CS 031



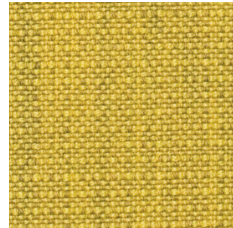
CS 033



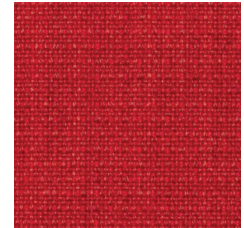
CS 430



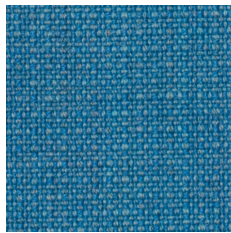
CS 032



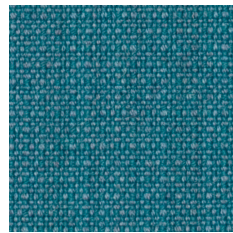
CS 202



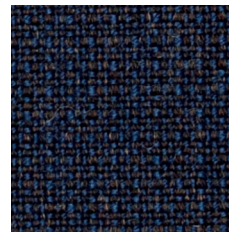
CS 432



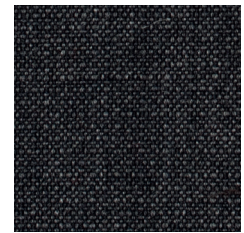
CS 601



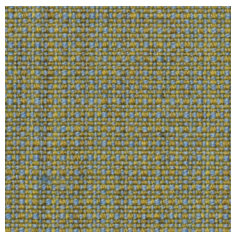
CS 602



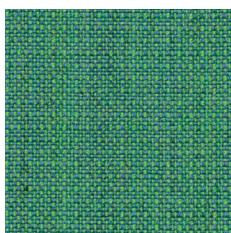
CS 125



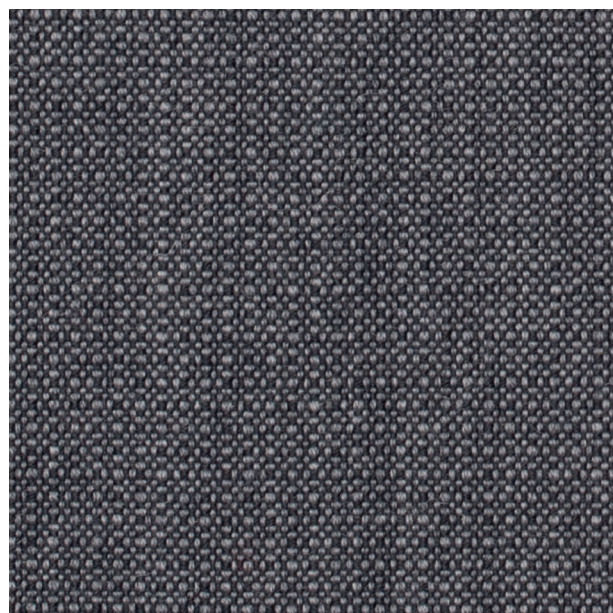
CS 013



CS 201



CS 605



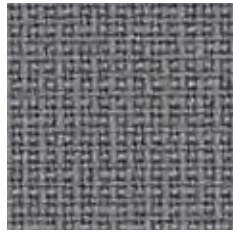
CS 022

- D**
- 93% Schurwolle, 7% poliamid
 - Gewicht 328 g/m²
 - Rollenbreite: 140 cm
 - Scheuerfestigkeit 200 000 Zyklen Martindale (EN ISO 12947-2)
 - Fusselbildung 4-5 (EN ISO 12945-2)
 - Lichtbeständigkeit 5-7 (EN ISO 105 - B02)
 - Abrieffestigkeit 4-5 (EN ISO 105 x 12 (nass/trocken))
 - Entzündlichkeit EN 1021 1&2, BS 5852 0&1, Calif. Bull. 117-E Klasse 1, IMO MS c 307(88) Annex 1 Parte 8, Zertifikat MED IMO

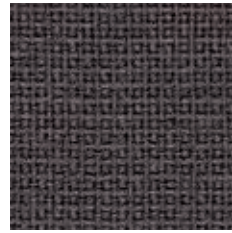
- GB**
- 93% wool, 7% polyamid
 - weight 328 g/m²
 - roll width: 140 cm
 - abrasion 200 000 cycles Martindale (EN ISO 12947-2)
 - resistance to pilling 4-5 (EN ISO 12945-2)
 - light fastness 5-7 (EN ISO 105 - B02)
 - rubbing fastness 4-5 (EN ISO 105 x 12 (wet/dry))
 - non-flammability certificate: EN 1021 1&2, BS 5852 0&1, Calif. Bull. 117-E class 1, IMO MS c 307(88) Annex 1 part 8, MED certificate IMO

- PL**
- 93% wełna, 7% poliamid
 - waga 328 g/m²
 - szer. rolki: 140 cm
 - odporność na ścieranie 200 000 cykli Martindale (EN ISO 12947-2)
 - odporność na pilling 4-5 (EN ISO 12945-2)
 - odporność na światło 5-7 (EN ISO 105 - B02)
 - odporność na ścieranie 4-5 (EN ISO 105 x 12 (mokry/suchy))
 - atest trudnozapałności EN 1021 1&2, BS 5852 0&1, Calif. Bull. 117-E klasa 1, IMO MS c 307(88) aneks 1 część 8, certyfikat MED IMO





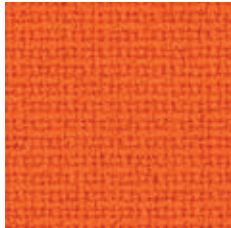
F 0078



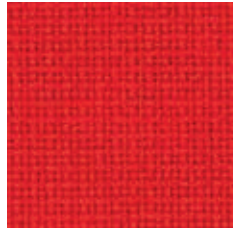
F 0019



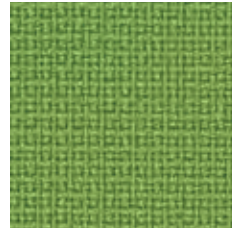
F 0099



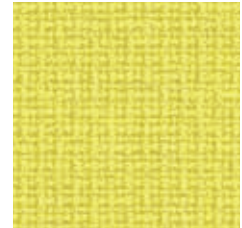
F 3016



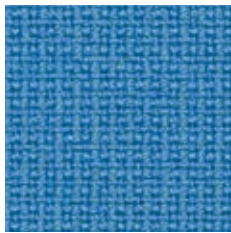
F 4119



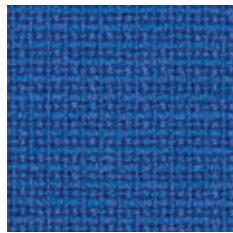
F 8035



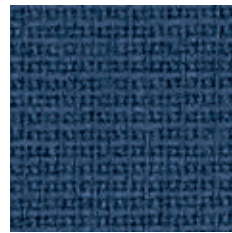
F 2067



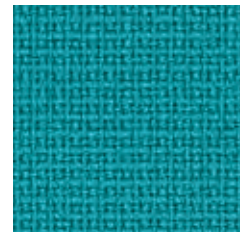
F 6118



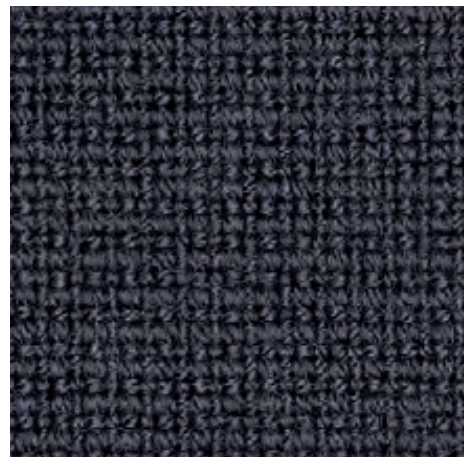
F 6075



F 6071



F 7016



F 0017

- D**
- 95% Schurwolle, 5% Polyamid
 - Gewicht 450 g/m²
 - Rollenbreite: 140 cm
 - Scheuerfestigkeit 200 000 Zyklen Martindale
 - Fusselbildung 4 (EN ISO 12945-2)
 - Lichtbeständigkeit 5-7 (EN ISO 105 - B02)
 - Abrieffestigkeit 4-5 (EN ISO 105 x 12 (nass/trocken))
 - Entzündlichkeit EN 1021 P 1&2 (Zigaretten, Streichholztest) BS 5852 (Crib 5) BS 5852 O&1 UNI 9175 Klasse 1 IM Calif. Bull. 117-E Klasse 1
 - Reinigung - Trockenreinigung

- GB**
- 95% wool, 5% polyamide
 - weight 450 g/m²
 - roll width: 140 cm
 - abrasion 200 000 cycles Martindale (EN ISO 12947-2)
 - resistance to pilling 4 (EN ISO 12945-2)
 - light fastness 5-7 (EN ISO 105 - B02)
 - rubbing fastness 4-5 (EN ISO 105 x 12 (wet/dry))
 - non-flammability certificate: EN 1021 P 1&2 (cigarette, match) BS 5852 (Crib 5) BS 5852 O&1 UNI 9175 class 1 IM Calif. Bull. 117-E class 1
 - cleaning - dry cleaning

- PL**
- 95% wełna, 5% poliamid
 - waga 450 g/m²
 - szer. rolki: 140 cm
 - odporność na ścieranie 200 000 cykli Martindale (EN ISO 12947-2)
 - odporność na pilling 4 (EN ISO 12945-2)
 - odporność na światło 5-7 (EN ISO 105 - B02)
 - odporność na ścieranie 4-5 (EN ISO 105 x 12 (mokry/suchy))
 - atest trudnozapałności EN 1021 P 1&2 (papieros, zapalnik) BS 5852 (Crib 5) BS 5852 O&1 UNI 9175 class 1 IM Calif. Bull. 117-E class 1
 - czyszczenie - na sucho





RX 912



RX 163



RX 173



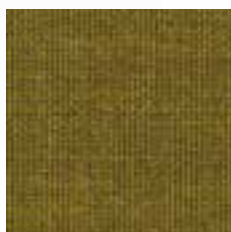
RX 393



RX 733



RX 123



RX 412



RX 753



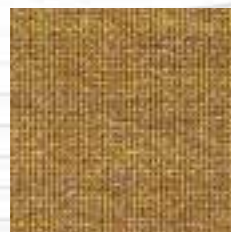
RX 762



RX 643



RX 543



RX 433



RX 942



- D**
- **Anwendungsbereich:** Büros, Hotels, Objectbereich, privaten Wohnbereich. Hohe Strapazierfähigkeit
 - **Zusammensetzung:** 90% Schurwolle, 10% nylon (Wolle mit erhöhter Widerstandsfähigkeit)
 - **Gewicht:** Ungefähr 415 g/lin.m
Reinigung: Staubsaugen und Reinigung
 - **Scheuerfähigkeit:** Ungefähr 100.000 Martindale rubs, EN ISO 12947
 - **Fusselbildung:** Note 3-4, EN ISO 12945
 - **Lichtechtheit:** Note 5-7, ISO 105-B02
 - **Flammwidrigkeit:** EN 1021-1/2. BS 5852 Zündquelle 2-3. ÖNORM B1/Q1. NF D 60 013. UNI 9175 11M. US Cal. Tech. Bull. 117. AS/NZS 3837 Klasse 2. Sec. E, IMO A.652(16).(Crib 5 und B2 (bei schwerentflammbare Ausrüstung))

- GB**
- **Application:** Offices, hotels, institutions, domestic use. Great durability.
 - **Composition:** 90% new wool, worsted; 10% nylon
 - **Weight:** Approximately 415 g/lin.m
 - **Cleaning:** Vacuuming and dry cleaning
 - **Abrasion:** Approximately 100.000 Martindale rubs, EN ISO 12947
 - **Pilling:** Note 3-4, EN ISO 12945
 - **Lightfastness:** Note 5-7, ISO 105-B02
 - **Flame resistance:** EN 1021-1/2. BS 5852 ignition source 2-3. ÖNORM B1/Q1. NF D 60 013. UNI 9175 11M. US Cal. Tech. Bull. 117. AS/NZS 3837 class 2. Sec. E, IMO A.652(16).(Crib 5 and B2 (when flame protected))

- PL**
- **Zastosowanie:** Biura, hotele, instytucje, domy/mieszkania. Wysoka trwałość.
 - **Skład:** 90% wełna, 10% nylon (Wełna o podwyższonej wytrzymałości)
 - **Waga:** ok. 415 g/m²
 - **Czyszczenie:** odkurzanie i czyszczenie chemiczne
 - **Odporność na ścieranie:** 100.000 Martindale rubs, EN ISO 12947
 - **Odporność na pilling:** Note 3-4, EN ISO 12945
 - **Odporność na światło:** Note 5-7, ISO 105-B02
 - **Atest trudnopalności:** EN 1021-1/2. BS 5852 źródło zapłonu 2-3. ÖNORM B1/Q1. NF D 60 013. UNI 9175 11M. US Cal. Tech. Bull. 117. AS/NZS 3837 klasa 2. Sec. E, IMO A.652(16).(Crib 5 i B2 (po uniepalnieniu))



Vorgestellte Farbgebung ist kein Angebot im Sinne der Rechtsvorschriften
The colours presented do not constitute an offer within the meaning of the law
Przedstawiona kolorystyka nie stanowi oferty w rozumieniu prawa

edycja: 09.2014

